

# Orange County Boundary and Annexation Report 2018-2019 (January 1)



1. Lewis Street Reorganization between the City of Garden Grove and the City of Orange (RO 17-01)
2. Annexation of Six Unincorporated Islands to the City of La Habra (RO 18-01)

	January 1, 2019 Jurisdictions
	January 1, 2018 Jurisdictions

Source: OC Geomatics, 2018 & 2019  
 Note: Coastal boundary represents mean high tide circa 2015. Coastal boundary approximated by CDR GIS staff.

**Orange County Boundary and Annexation Report 2018-2019**

**Detailed Annexation List:**

- 1) Lewis Street Annexation between Garden Grove and Orange (RO 17-01)  
Effective: 2/14/2018  
From the City of Orange to the City of Garden Grove  
Uninhabited  
0.96 acres (0.001 sq. miles)
- 2) Annexation of unincorporated islands to the City of La Habra (RO 18-01)  
Effective: 4/17/2018  
From the County of Orange to the City of La Habra  
Inhabited: SFD and MFD  
127.88 acres (0.200 sq. miles)

Notes:  
Benchmark 2015.  
Some jurisdictions' legal boundary extends three miles off the coast.  
A fixed boundary line at the coast was created in November 2014 based on high-resolution county-wide aerial imagery that was captured on June 19, 2013, to approximate the ocean waterline and to eliminate artificial land area changes to jurisdictions adjacent to the Orange County coast. This coast line does not define any vertical datum such as mean high tide, mean sea level, or mean lower low tide. This reference line was developed through a collaboration of OC Public Works, OC LAFCO, and CDR; it has no legal value; and its purpose is for CDR's use in reporting population density and jurisdictional annexations.  
For official legal boundaries, contact the County of Orange Surveyor's office <http://ocpublicworks.com/survey/>

Jurisdiction	Total Area (Square Miles)*		Area Change 2018-2019**	Annexation Reference #
	January 1, 2018	January 1, 2019		
Aliso Viejo	6.921	6.921	0	
Anaheim	50.872	50.872	0	
Brea	12.221	12.221	0	
Buena Park	10.550	10.550	0	
Costa Mesa	15.849	15.849	0	
Cypress	6.622	6.622	0	
Dana Point	6.602	6.602	0	
Fountain Valley	9.065	9.065	0	
Fullerton	22.447	22.447	0	
Garden Grove	17.924	17.926	0.001	1
Huntington Beach	27.612	27.612	0	
Irvine	65.969	65.969	0	
Laguna Beach	8.932	8.932	0	
Laguna Hills	6.647	6.647	0	
Laguna Niguel	14.787	14.787	0	
Laguna Woods	3.306	3.306	0	
La Habra	7.369	7.569	0.200	2
Lake Forest	16.785	16.785	0	
La Palma	1.804	1.804	0	
Los Alamitos	4.091	4.091	0	
Mission Viejo	18.009	18.009	0	
Newport Beach	25.987	25.987	0	
Orange	25.783	25.782	-0.001	1
Placentia	6.621	6.621	0	
Rancho Santa Margarita	12.938	12.938	0	
San Clemente	18.357	18.357	0	
San Juan Capistrano	14.407	14.407	0	
Santa Ana	27.352	27.352	0	
Seal Beach	11.880	11.880	0	
Stanton	3.105	3.105	0	
Tustin	11.137	11.137	0	
Villa Park	2.078	2.078	0	
Westminster	10.070	10.070	0	
Yorba Linda	19.867	19.867	0	
Unincorporated	275.844	275.644	-0.200	2
<b>Orange County</b>	<b>799.811</b>	<b>799.811</b>	<b>0</b>	

Source: O.C. Geomatics, 2018 & 2019

\*Area calculated in ArcGIS by CDR.

\*\*Annual area change totals may not match detailed annexation information due to rounding.

EXHIBIT A

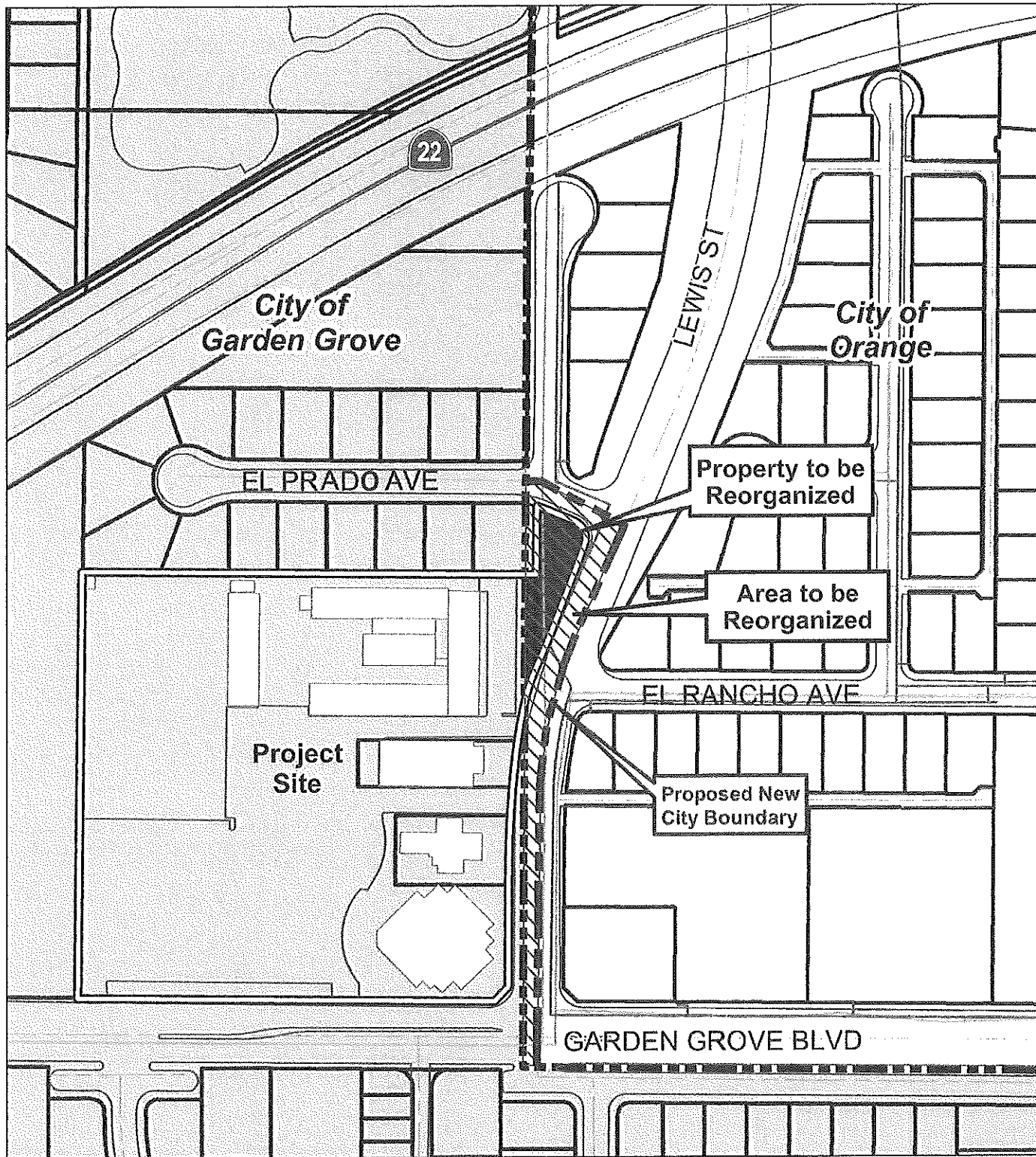
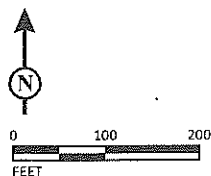


FIGURE 2.8

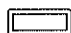

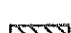

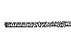
LSA



SOURCE: City of Orange

I:\SHO1501\G\Prop\_Reorganization.cdr (12/29/2016)

LEGEND

-  - Project Site
-  - Project Site Area to be Reorganized for inclusion into the City of Garden Grove
-  - Area of Reorganization
-  - Sewer
-  - Water

*Lewis Street Reorganization between the City of Garden Grove and the City of Orange (RO 17-01) and Residential Project Proposed Reorganization*

**Attachment B**

**EXHIBIT "B"**  
 TO ACCOMPANY LEGAL DESCRIPTION  
**"LEWIS STREET REORGANIZATION BETWEEN THE CITY OF GARDEN GROVE AND THE CITY OF ORANGE" (RO 17-01)**

**SURVEYOR'S STATEMENT:**  
 THIS PROPOSAL WAS PREPARED BY ME OR UNDER MY SUPERVISION.  
 DATED THIS 8th DAY OF August, 2017  
 KURT R. TROXELL, L.S. 7854



**NOTE:**  
 COORDINATES SHOWN ARE BASED ON THE CALIFORNIA COORDINATE SYSTEM (CGCS3), ZONE VI, 1983 NAD (1991.35 EPOCH CGS GPS ADJUSTMENT).  
 ALL DIMENSIONS SHOWN ARE GROUND UNLESS OTHERWISE NOTED. TO OBTAIN GRID DISTANCE MULTIPLY GROUND DISTANCE BY 0.99998291

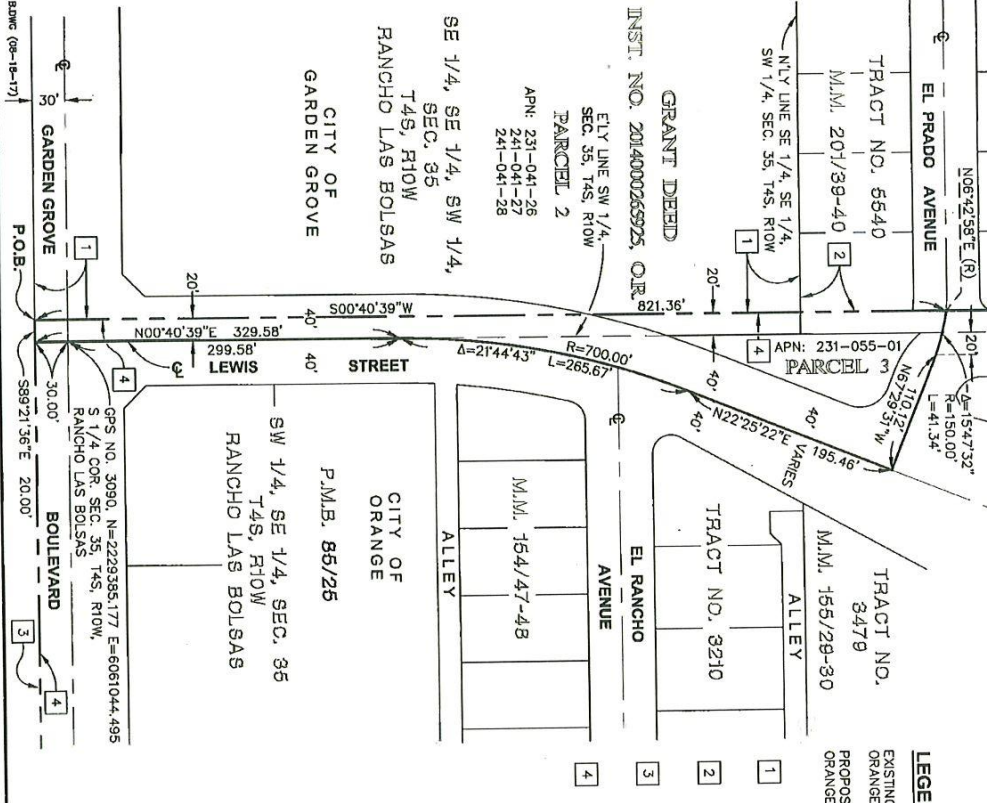
**AREA OF REORGANIZATION:**  
 AREA = 39,238 SQUARE FEET  
 (0.901 ACRES)

**COUNTY SURVEYOR'S STATEMENT:**  
 THIS DESCRIPTION AND MAP OF PROPOSED REORGANIZATION DOES MEET THE APPROVAL OF THE ORANGE COUNTY SURVEYOR'S OFFICE.  
 DATED THIS 21st DAY OF August, 2017

KEVIN R. HILLS, COUNTY SURVEYOR  
 L.S. 6617, EXP. 12/31/2017

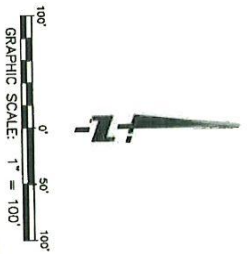


Map/MapSheet/VAS/13/LEWIS/ST/ORD/024-01380-03H BLMG (08-18-17)



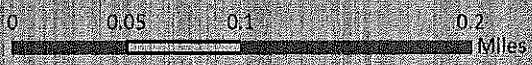
**LEGEND:**

- EXISTING GARDEN GROVE AND ORANGE CITY LIMIT LINE
- PROPOSED GARDEN GROVE AND ORANGE CITY LIMIT LINE
- EXISTING CITY OF GARDEN GROVE & CITY OF ORANGE LIMIT LINE PER ANNEXATION NO. 27, ORD. NO. 84 CERT. 9/13/1957
- EXISTING GARDEN GROVE & ORANGE CITY LIMIT LINE PER ANNEXATION NO. 131, ORD. NO. 1029 CERT. 11/29/1958
- EXISTING CITY OF GARDEN GROVE & COUNTY OF ORANGE LIMIT LINE PER ANNEXATION NO. 4, ORD. NO. 24 CERT. 12/31/1956
- EXISTING CITY OF ORANGE & COUNTY OF ORANGE LIMIT LINE PER ANNEXATION NO. 79, ORD. NO. 663 CERT. 10/05/1956



<b>CITY OF GARDEN GROVE</b>	
<b>BOUNDARY LINE ADJUSTMENT</b>	
BETWEEN CITY OF GARDEN GROVE AND CITY OF ORANGE	
SCALE: 1" = 100'	DATE: August 25, 2016
DRAWN BY: JBF	CHECKED BY: KRT

# ATTACHMENT A



City of La Habra  
Macy/Randall Island

# ATTACHMENT B



City of La Habra  
Citrus/Idaho Island



# ATTACHMENT C

## LA HABRA HEIGHTS ISLANDS

Los Angeles County

Orange County



Entrada

Citrus Drive

La Habra



City of La Habra  
Citrus/Entrada Island



**ATTACHMENT D**

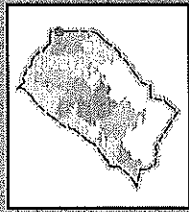
**LA HABRA HEIGHTS**

Los Angeles County

Orange County



La Habra



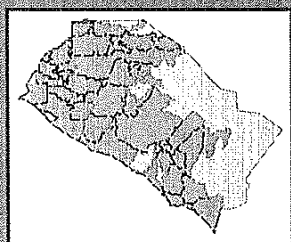
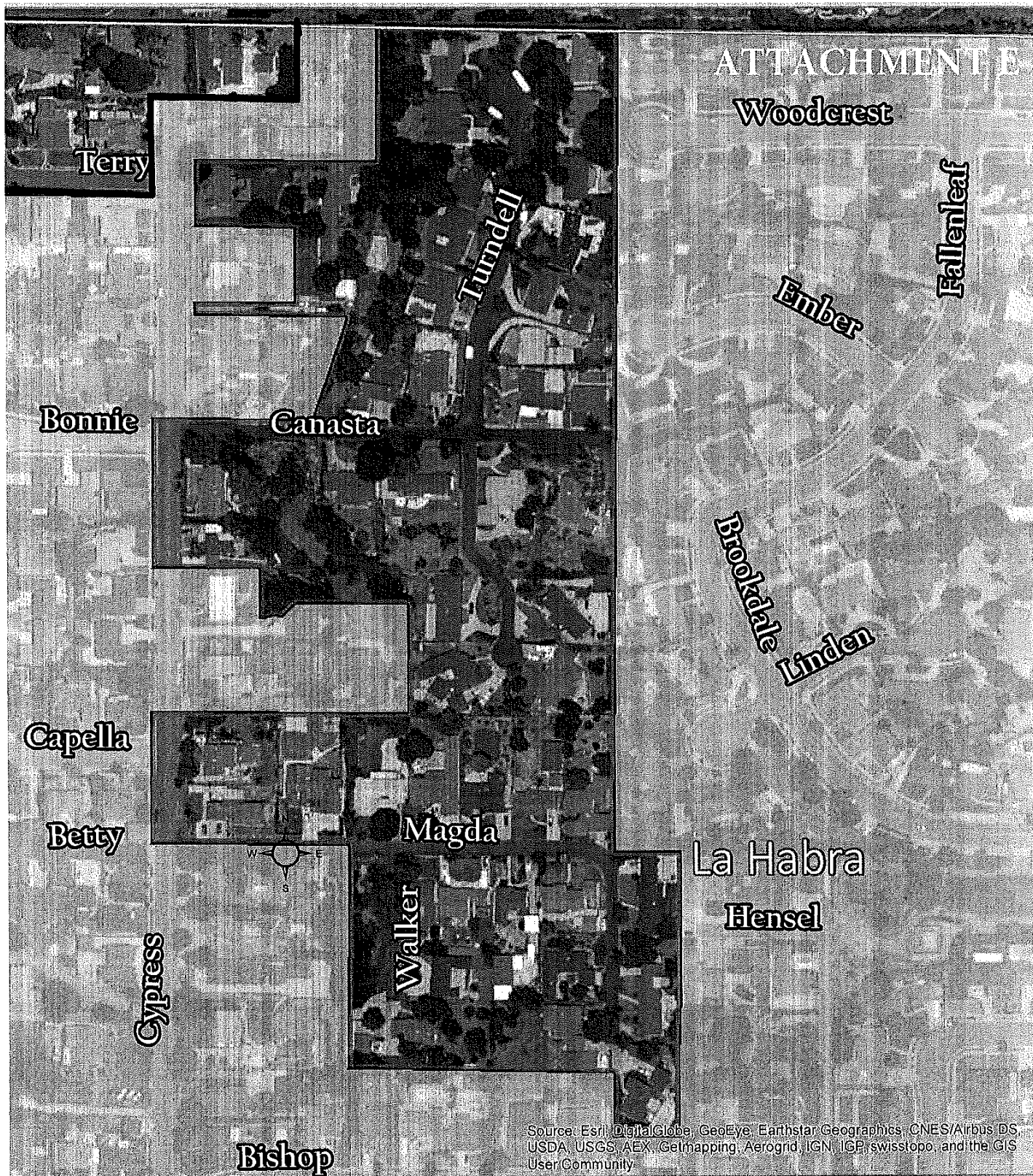
City of La Habra  
Cypress/Terry Island



E:\GIS\Projects\18-Terminal\ProjectFiles\03a\Map\ark\_habra\018\_nisr

Aerial Imagery courtesy of Bing

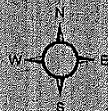




### City of La Habra Hensel/Magda Island

#### Legend

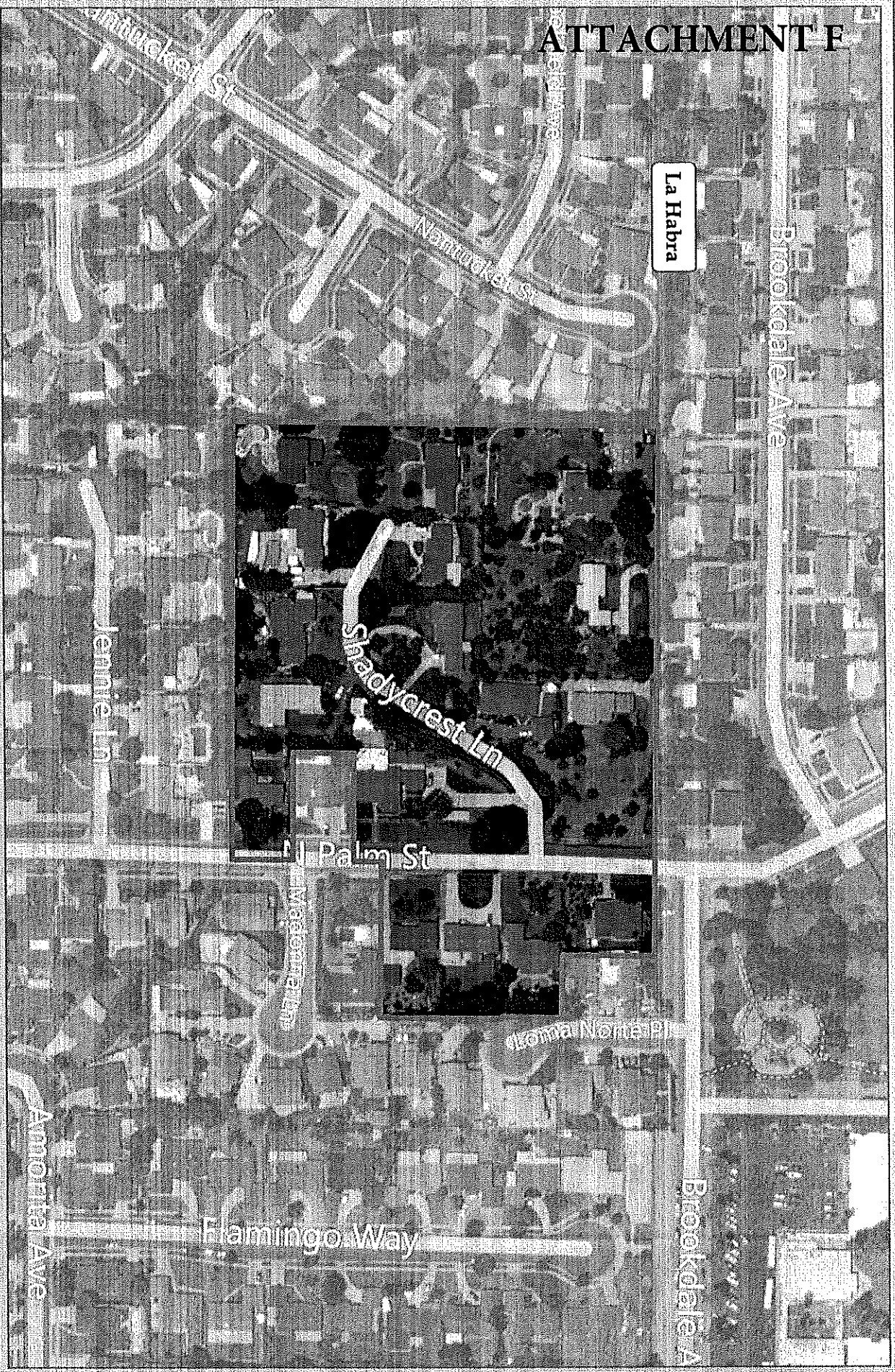
- LA HABRA
- Hensel/Magda Island



0.10  
1 Miles

# ATTACHMENT E

La Habra



North arrow pointing upwards.

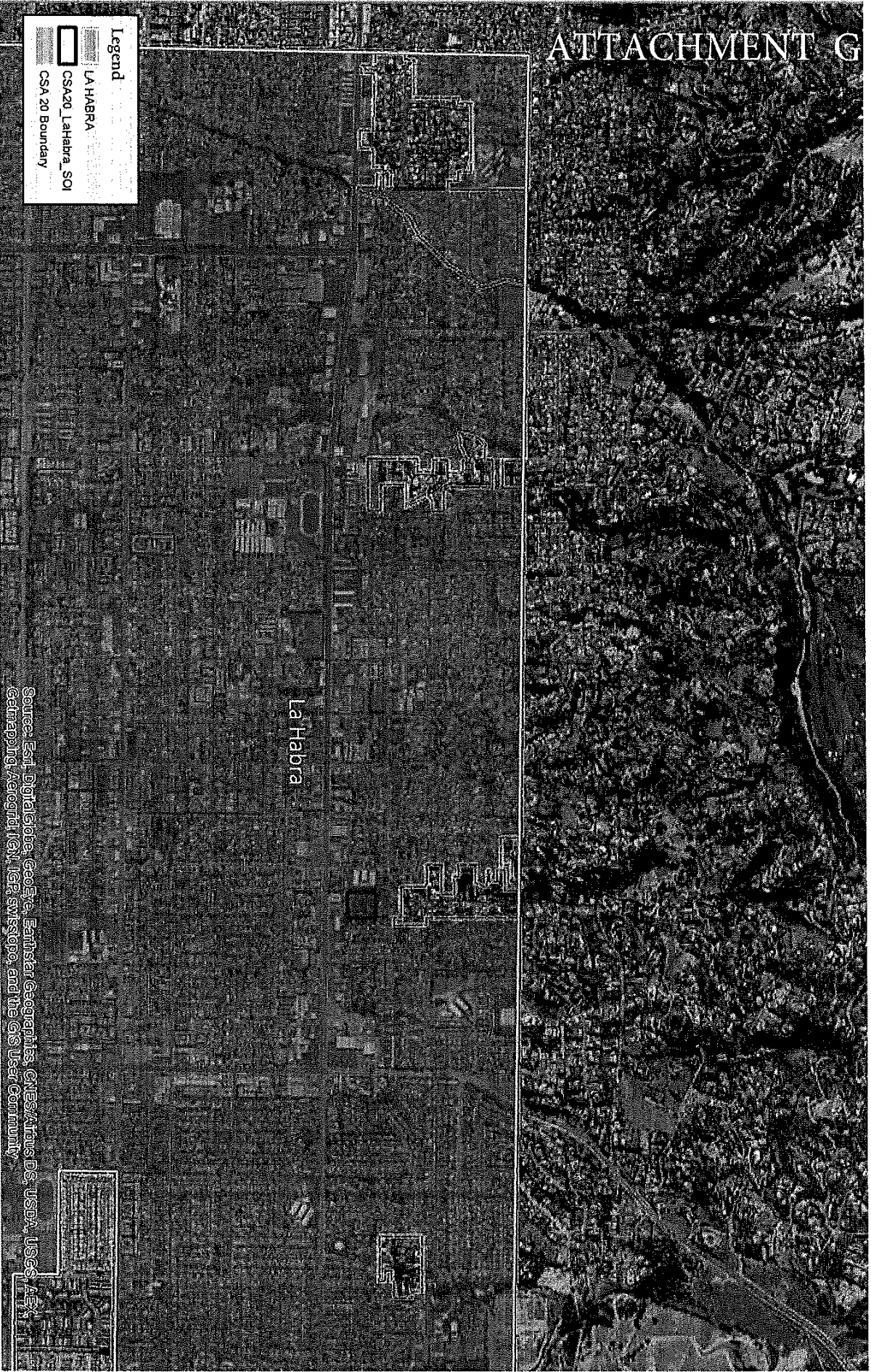


City of La Habra  
Palm/Shadycrest Island

 Palm/Shadycrest Island

5/18/12

# ATTACHMENT G



Source: Esri, DigitalGlobe, GeoEye, Earthstar Geographics, CNES/Airbus DS, USDA, USGS, AeroGRID, IGN, IGA, Swisstopo, and the GIS User Community

## Unincorporated Islands in the City of La Habra under the County Sewer Assesment 20

