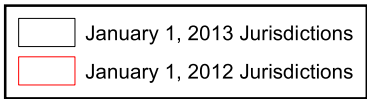


Orange County Boundary and Annexation Report 2012-2013 (January 1)



1. County Boundary Reorganization for the City of Seal Beach (RO 11-03)
2. County Boundary Reorganization for the City of Los Alamitos (RO 11-02)
3. Kermore Island Annexation to the City of Stanton (IA 12-03)



Source: OC Geomatics, 2012 & 2013
 Note: Coastal boundary represents mean high tide circa 2015. Coastal boundary approximated by CDR GIS staff.

Orange County Boundary and Annexation Report 2012-2013

Jurisdiction	Total Area (Square Miles)*		Area Change 2012-2013**	Annexation Reference #
	January 1, 2012	January 1, 2013		
Aliso Viejo	6.921	6.921	0	
Anaheim	50.872	50.872	0	
Brea	12.221	12.221	0	
Buena Park	10.550	10.550	0	
Costa Mesa	15.827	15.827	0	
Cypress	6.622	6.622	0	
Dana Point	6.602	6.602	0	
Fountain Valley	9.065	9.065	0	
Fullerton	22.447	22.447	0	
Garden Grove	17.923	17.923	0	
Huntington Beach	27.612	27.612	0	
Irvine	65.969	65.969	0	
Laguna Beach	8.932	8.932	0	
Laguna Hills	6.647	6.647	0	
Laguna Niguel	14.787	14.787	0	
Laguna Woods	3.306	3.306	0	
La Habra	7.369	7.369	0	
Lake Forest	16.785	16.785	0	
La Palma	1.804	1.804	0	
Los Alamitos	4.089	4.091	0.002	2
Mission Viejo	17.933	17.933	0	
Newport Beach	25.984	25.984	0	
Orange	25.783	25.783	0	
Placentia	6.621	6.621	0	1
Rancho Santa Margarita	12.937	12.937	0	3
San Clemente	18.357	18.357	0	
San Juan Capistrano	14.407	14.407	0	
Santa Ana	27.352	27.352	0	
Seal Beach	11.991	11.880	-0.111	1
Stanton	3.087	3.105	0.018	3
Tustin	11.137	11.137	0	
Villa Park	2.078	2.078	0	
Westminster	10.070	10.070	0	
Yorba Linda	19.867	19.867	0	
Unincorporated	275.965	275.947	-0.018	3
Orange County	799.920	799.811	-0.109	1, 2

Source: O.C. Geomatics, 2012 & 2013

*Area calculated in ArcGIS by CDR.

**Annual area change totals may not match detailed annexation information due to rounding.

Detailed Annexation List:

- 1) County Boundary Reorganization for the City of Seal Beach (RO 11-03)
Effective: 2/16/2012
From Seal Beach to Long Beach (Los Angeles County)
Uninhabited
71.24 acres (0.11131 sq. miles)
- 2) County Boundary Reorganization for the City of Los Alamitos (RO 11-02)
Effective: 2/16/2012
From Long Beach (Los Angeles County) to Los Alamitos
Uninhabited (neighborhood park)
1.28 acres (0.002 sq. miles)
- 3) Kernore Island Annexations to the City of Stanton (IA 12-03)
Effective: 6/11/2012
From Unincorporated Orange County to Stanton
Inhabited: SFD & MF
11.47 acres (0.01792 sq. miles)

Notes:

Benchmark 2015.
Some jurisdictions' legal boundary extends three miles off the coast.
A fixed boundary line at the coast was created in November 2014 based on high-resolution county-wide aerial imagery that was captured on June 19, 2013, to approximate the ocean waterline and to eliminate artificial land area changes to jurisdictions adjacent to the Orange County coast. This coast line does not define any vertical datum such as mean high tide, mean sea level, or mean lower low tide. This reference line was developed through a collaboration of OC Public Works, OC LAFCO, and CDR; it has no legal value; and its purpose is for CDR's use in reporting population density and jurisdictional annexations.
For official legal boundaries, contact the County of Orange Surveyor's office
<http://ocpublicworks.com/survey/>

Exhibit B

EXHIBIT "B" COUNTY BOUNDARY ADJUSTMENT AREA I FROM ORANGE COUNTY TO LOS ANGELES COUNTY

COUNTY BOUNDARY REORGANIZATION FOR THE
 CITY OF SEAL BEACH (00 11-43)

DETACH FROM

CITY OF SEAL BEACH
 ORANGE COUNTY VECTOR CONTROL DISTRICT
 ORANGE COUNTY CEMETERY DISTRICT
 ORANGE COUNTY PARKS (CSA 26)
 ORANGE COUNTY SANITATION DISTRICT
 ORANGE COUNTY WATER DISTRICT
 MUNICIPAL WATER DISTRICT OF ORANGE COUNTY

CITY OF LONG BEACH REORGANIZATION NO. 7011-13
 (COUNTY BOUNDARY ADJUSTMENT)

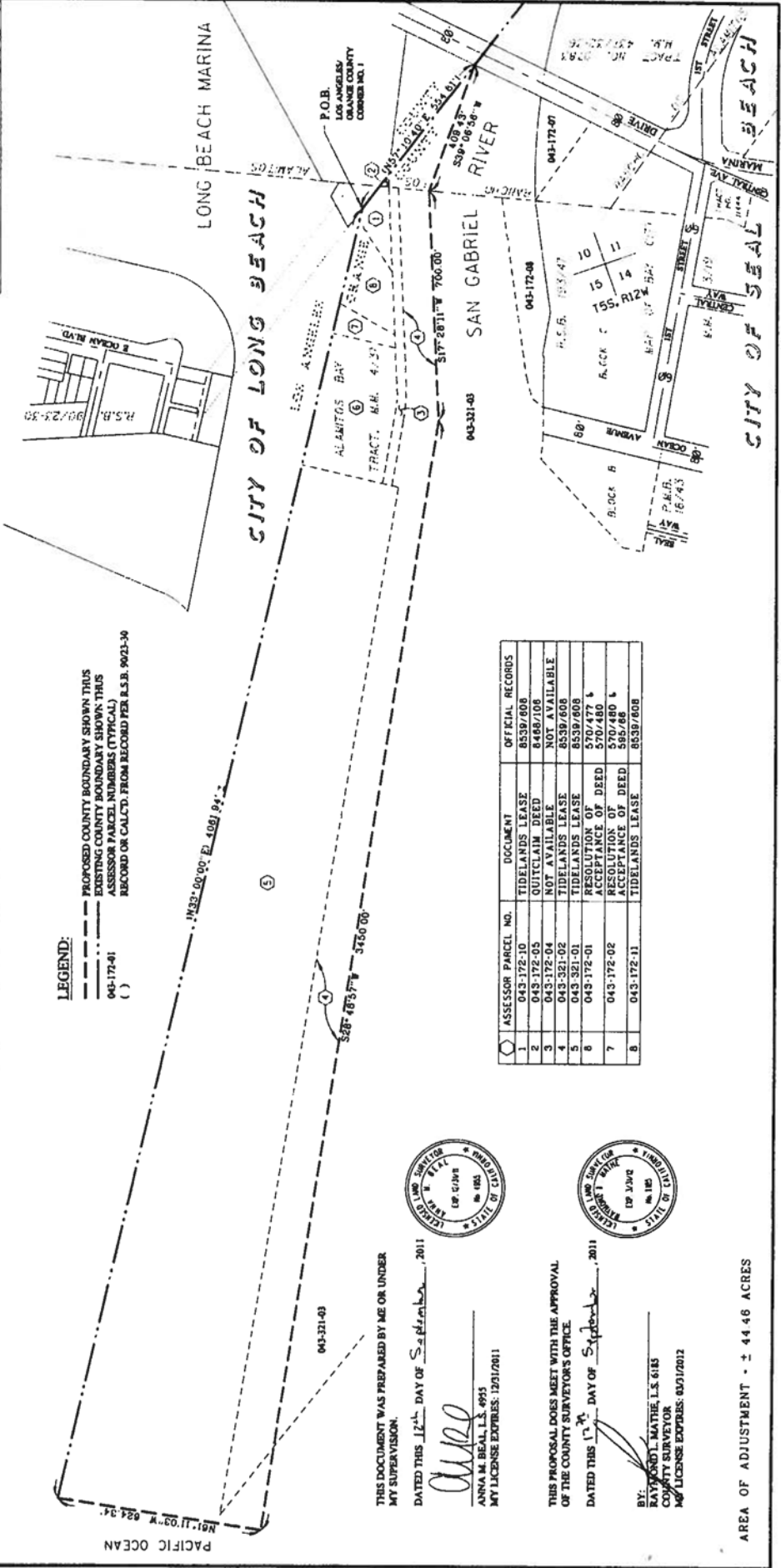
ANNEX TO

CITY OF LONG BEACH
 LOS ANGELES COUNTY SANITATION DISTRICT NO. 3
 WATER REPLISHMENT DISTRICT OF SOUTHERN CALIFORNIA



LEGEND:

- PROPOSED COUNTY BOUNDARY SHOWN TRUS
- EXISTING COUNTY BOUNDARY SHOWN THUS
- 043-172-41 ASSESSOR PARCEL NUMBERS (TYPICAL)
- () RECORD OR CALCULATED FROM RECORD PER A.S.B. 9023-30



ASSESSOR PARCEL NO.	DOCUMENT	OFFICIAL RECORDS
1	TIDELANDS LEASE	8539/608
2	QUITCLAIM DEED	8488/708
3	NOT AVAILABLE	NOT AVAILABLE
4	TIDELANDS LEASE	8539/608
5	TIDELANDS LEASE	8539/608
6	RESOLUTION OF DEED	570/477
7	RESOLUTION OF DEED	570/480
8	ACCEPTANCE OF DEED	595/66
B	TIDELANDS LEASE	8539/608

THIS DOCUMENT WAS PREPARED BY ME OR UNDER
 MY SUPERVISION.

DATED THIS 12th DAY OF September, 2011

Anna M. Beall
 ANNA M. BEALL, L.S. 4993
 COUNTY SURVEYOR
 MY LICENSE EXPIRES: 12/01/2011



THIS PROPOSAL DOES MEET WITH THE APPROVAL
 OF THE COUNTY SURVEYOR'S OFFICE.

DATED THIS 1st DAY OF September, 2011

BY:
 RAYMOND L. MATHE, L.S. 6185
 COUNTY SURVEYOR
 MY LICENSE EXPIRES: 02/01/2012



AREA OF ADJUSTMENT = ± 44.46 ACRES

THIS DOCUMENT WAS PREPARED BY ME OR UNDER MY SUPERVISION.

DATED THIS 24 DAY OF August, 2011

Anna M. Beall

ANNA M. BEALL, L.S. 4653
 MY LICENSE EXPIRES: 12/31/2011



THIS PROPOSAL DOES MEET WITH THE APPROVAL OF THE COUNTY SURVEYOR'S OFFICE.

DATED THIS 24 DAY OF August, 2011

BY: RAYMOND LEWATHR, L.S. 6118
 COUNTY SURVEYOR
 MY LICENSE EXPIRES: 03/31/2012



EXHIBIT "B"

COUNTY BOUNDARY ADJUSTMENT AREA 4 FROM ORANGE COUNTY TO LOS ANGELES COUNTY

COUNTY BOUNDARY REORGANIZATION FOR THE CITY OF SEAL BEACH (NO 11-03)

DETACH FROM

CITY OF SEAL BEACH
 ORANGE COUNTY VECTOR CONTROL DISTRICT
 ORANGE COUNTY CEMETERY DISTRICT
 ORANGE COUNTY WATER DISTRICT
 MUNICIPAL WATER DISTRICT OF ORANGE COUNTY

ANNEX TO

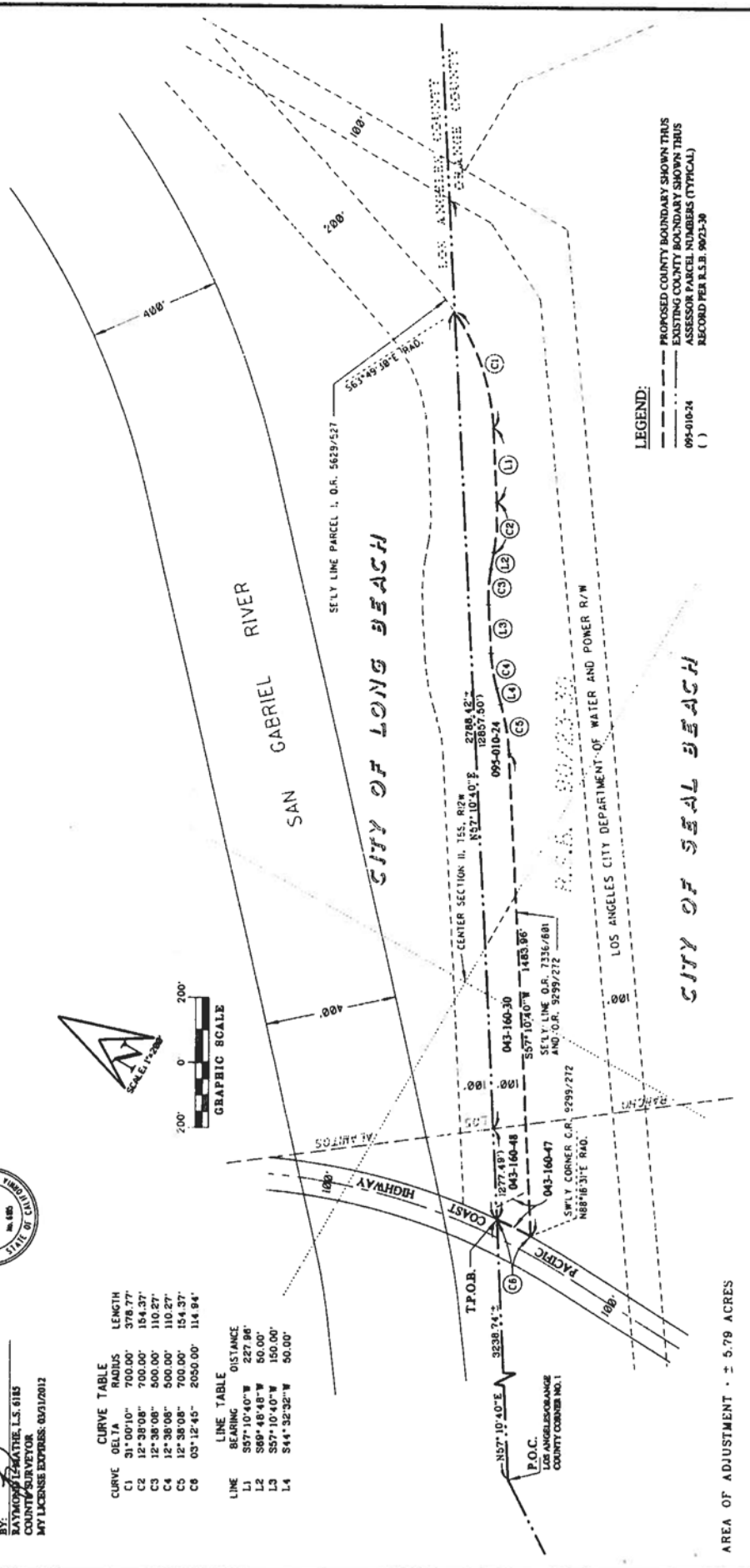
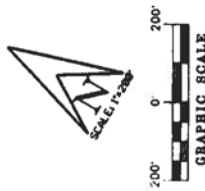
CITY OF LONG BEACH
 GREATER LOS ANGELES COUNTY VECTOR CONTROL DISTRICT
 LOS ANGELES COUNTY SANITATION DISTRICT NO. 3
 WATER REPLACEMENT DISTRICT OF SOUTHERN CALIFORNIA

CITY OF LONG BEACH REORGANIZATION NO. 2011-13
 (COUNTY BOUNDARY ADJUSTMENT)



CURVE	DELTA	RADIUS	LENGTH
C1	31°00'10"	700.00'	378.77'
C2	12°38'08"	800.00'	194.37'
C3	12°38'08"	800.00'	110.27'
C4	12°38'08"	800.00'	110.27'
C5	12°38'08"	700.00'	154.37'
C6	03°12'45"	2050.00'	114.84'

LINE	BEARING	DISTANCE
L1	S87°10'40"W	227.86'
L2	S89°46'48"W	50.00'
L3	S87°10'40"W	100.00'
L4	S44°32'32"W	50.00'

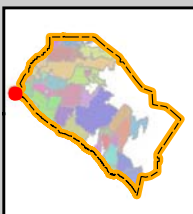


LEGEND:

- PROPOSED COUNTY BOUNDARY SHOWN THUS
- EXISTING COUNTY BOUNDARY SHOWN THUS
- ASSESSOR PARCEL NUMBERS (TYPICAL)
- () RECORD PER L.S.B. 9023-90

AREA OF ADJUSTMENT ± 5.79 ACRES

Exhibit 2 - Area 1 Vicinity Map



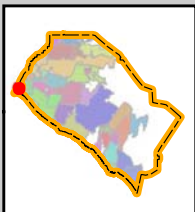
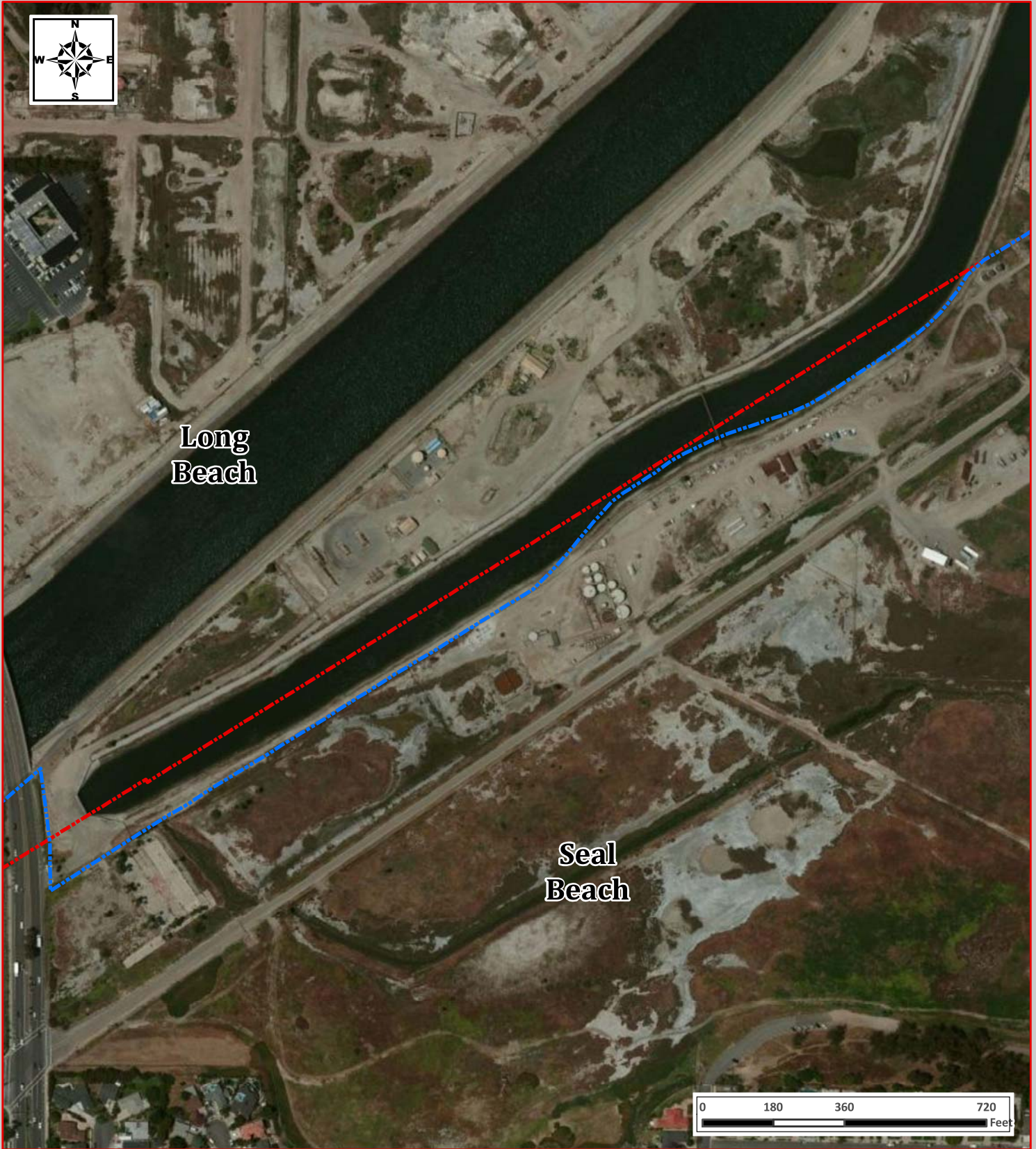
County Boundary Adjustment for the City of Seal Beach (RO 11-03)

Detachment from the City of Seal Beach, OC Vector Control District, OC Cemetery District, OC Parks (CSA 26), Orange County Sanitation District, Orange County Water District, and the Municipal Water District of Orange County

Legend

- Proposed Boundary
- Existing Boundary
- Area 1 Parcels

Exhibit 3 - Area 4 Vicinity Map

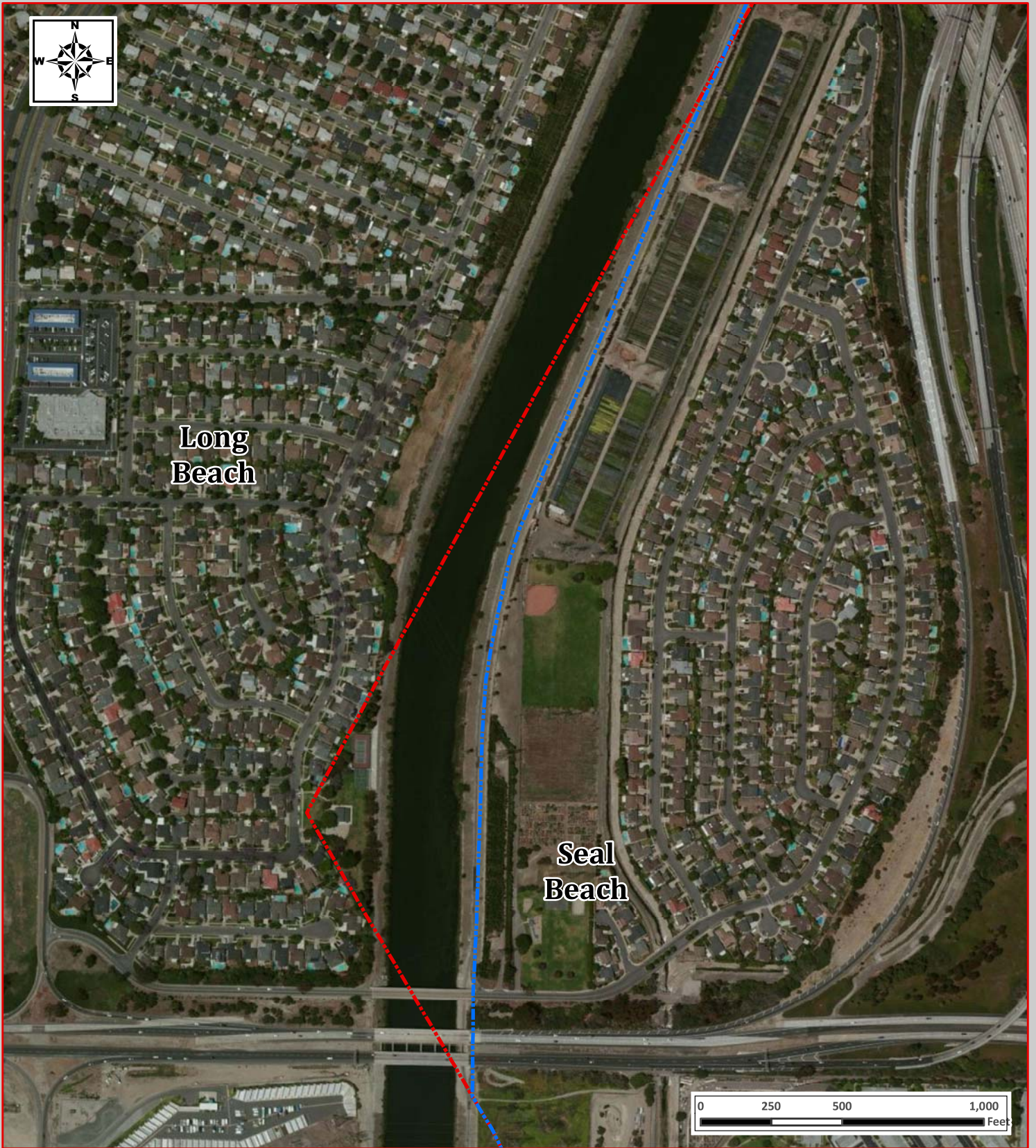


County Boundary Adjustment for the City of Seal Beach (RO 11-03)

Annexation to the City of Los Alamitos, OC Vector Control District, OC Cemetery District, OC Parks (CSA 26), Orange County Sanitation District, Orange County Water District, and the Municipal Water District of Orange County

Legend	
	Proposed Boundary
	Existing Boundary

Exhibit 4 - Area 5 Vicinity Map



County Boundary Adjustment for the City of Seal Beach (RO 11-03)

Annexation to the City of Los Alamitos, OC Vector Control District, OC Cemetery District, OC Parks (CSA 26), Orange County Sanitation District, Orange County Water District, and the Municipal Water District of Orange County

Legend	
	Proposed Boundary
	Existing Boundary

Aerial imagery courtesy of Bing maps; data courtesy of the City of Long Beach and Orange County LAFCO

Exhibit B

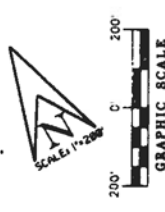
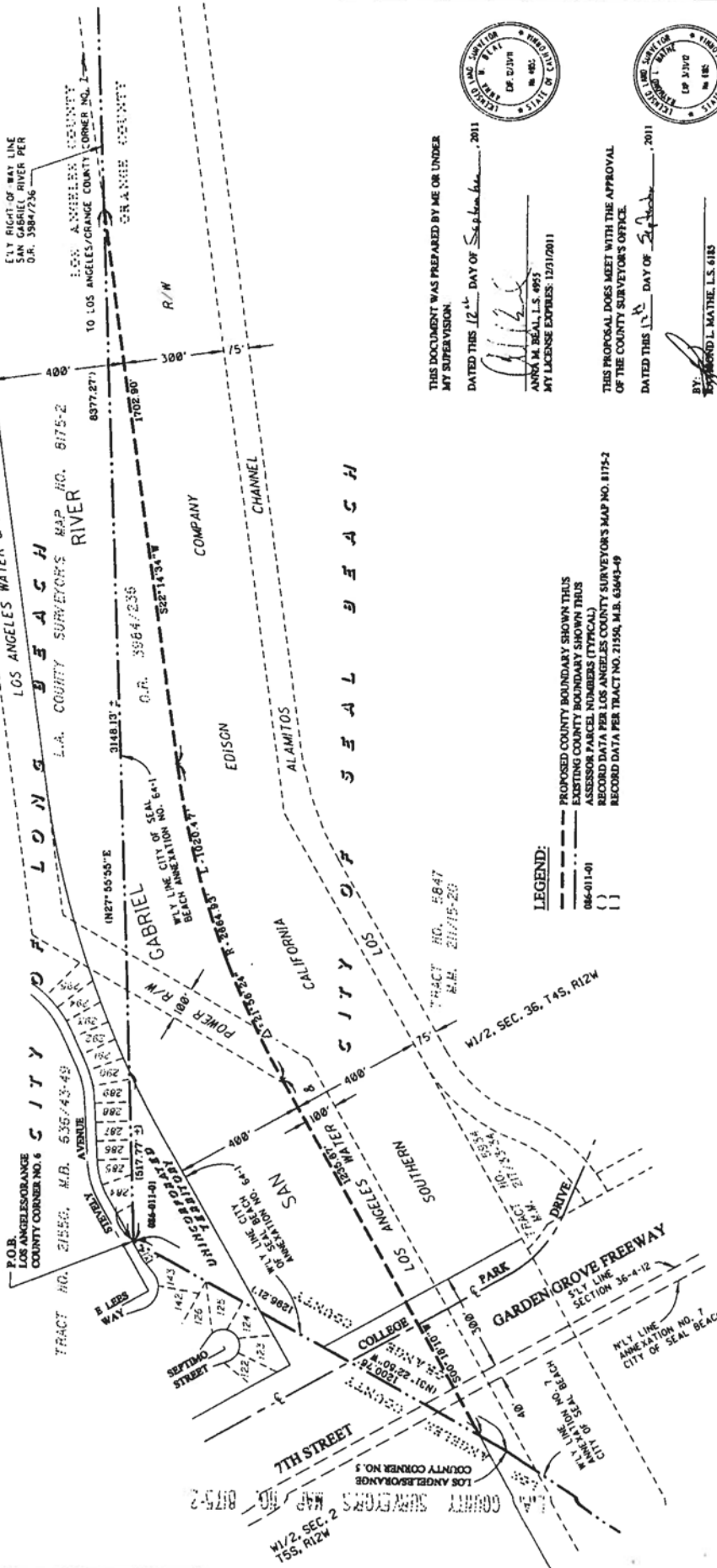


EXHIBIT "B" COUNTY BOUNDARY ADJUSTMENT AREA 5 FROM ORANGE COUNTY TO LOS ANGELES COUNTY

DETACH FROM
 COUNTY BOUNDARY REORGANIZATION FOR THE CITY OF SEAL BEACH (RD 11-46)
 ANNEX TO
 CITY OF LONG BEACH REORGANIZATION NO. 2011-13 (COUNTY BOUNDARY ADJUSTMENT)

CITY OF SEAL BEACH
 UNINCORPORATED TERRITORY OF ORANGE COUNTY
 ORANGE COUNTY VECTOR CONTROL DISTRICT
 ORANGE COUNTY CEMETERY DISTRICT
 ORANGE COUNTY PARKS (CSA 26)
 ORANGE COUNTY SANITATION DISTRICT
 MUNICIPAL WATER DISTRICT OF ORANGE COUNTY

CITY OF LONG BEACH
 GREATER LOS ANGELES COUNTY VECTOR CONTROL DISTRICT
 LOS ANGELES COUNTY SANITATION DISTRICT NO. 19
 WATER REPLACEMENT DISTRICT OF SOUTHERN CALIFORNIA



LEGEND:
 --- PROPOSED COUNTY BOUNDARY SHOWN THIS
 --- EXISTING COUNTY BOUNDARY SHOWN THIS
 () ASSESSOR PARCEL NUMBERS (TYPICAL)
 () RECORD DATA PER LOS ANGELES COUNTY SURVEYOR'S MAP NO. 8175-2
 () RECORD DATA PER TRACT NO. 21550, M.B. 65603-49

THIS DOCUMENT WAS PREPARED BY ME OR UNDER MY SUPERVISION.
 DATED THIS 12th DAY OF September, 2011



ANNA M. BEALL, L.S. 4953
 MY LICENSE EXPIRES: 12/31/2011

THIS PROPOSAL DOES MEET WITH THE APPROVAL OF THE COUNTY SURVEYOR'S OFFICE.
 DATED THIS 12th DAY OF September, 2011



BY: RAYMOND L. MATHIE, L.S. 6115
 COUNTY SURVEYOR
 MY LICENSE EXPIRES: 05/31/2012

AREA OF ADJUSTMENT ± 21.02 ACRES

Exhibit B

EXHIBIT "B" COUNTY BOUNDARY ADJUSTMENT AREA 7 FROM LOS ANGELES COUNTY TO ORANGE COUNTY

CITY OF LONG BEACH REORGANIZATION NO. 2011-13
 (COUNTY BOUNDARY ADJUSTMENT)

DETACH FROM

CITY OF LONG BEACH
 LOS ANGELES COUNTY VECTOR CONTROL DISTRICT
 LOS ANGELES COUNTY SANITATION DISTRICT NO. 19
 WATER REPLENISHMENT DISTRICT OF SOUTHERN CALIFORNIA

ANNEX TO

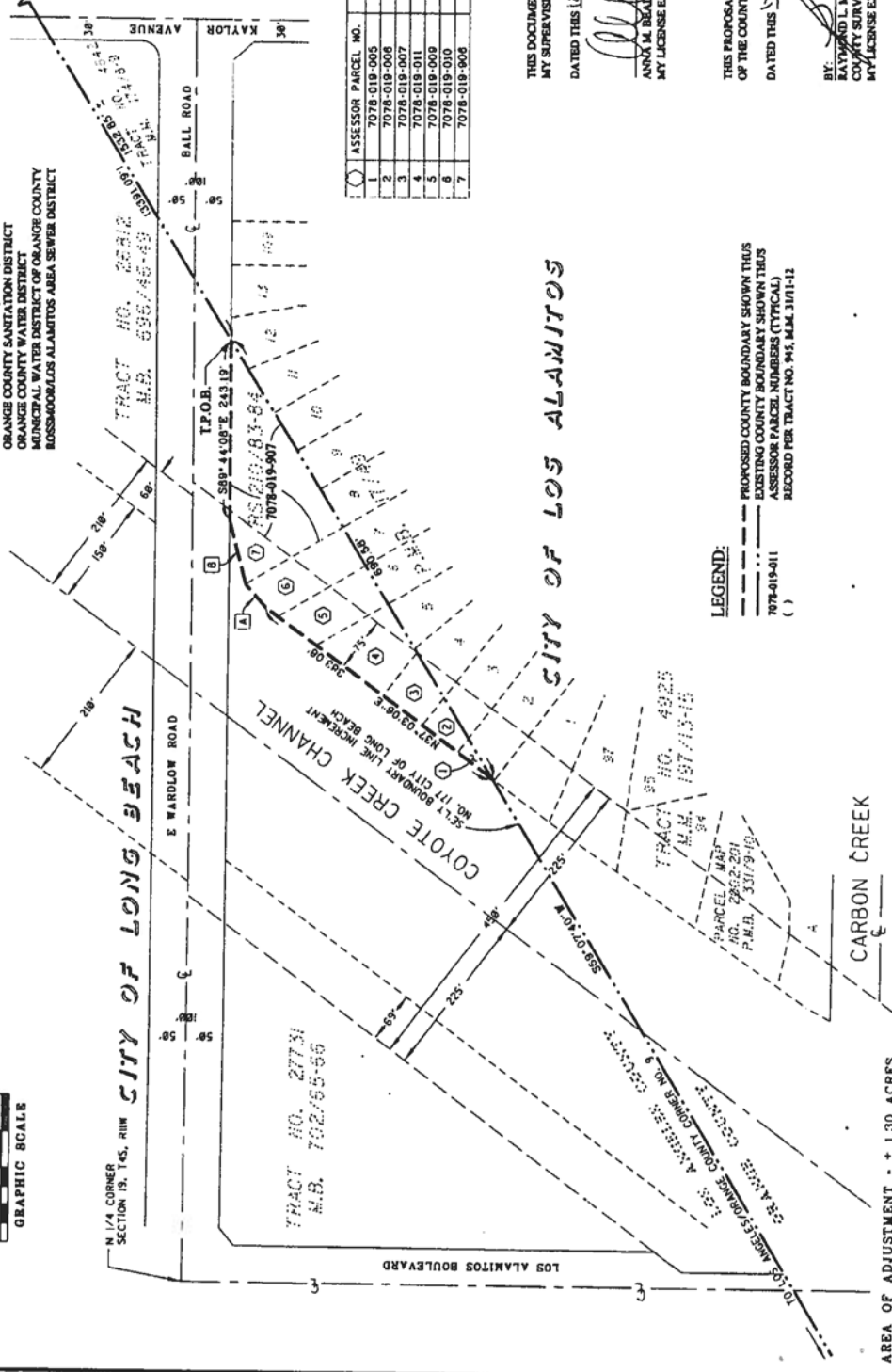
CITY OF LOS ALAMITOS
 ORANGE COUNTY VECTOR CONTROL DISTRICT
 ORANGE COUNTY CEMETERY DISTRICT
 ORANGE COUNTY PARKS (CSA 70)
 ORANGE COUNTY SANITATION DISTRICT
 ORANGE COUNTY WATER DISTRICT
 MUNICIPAL WATER DISTRICT OF ORANGE COUNTY
 ROSSSHOUBLOS ALAMITOS AREA SEWER DISTRICT

COUNTY BOUNDARY REORGANIZATION FOR THE
 CITY OF LOS ALAMITOS (NO 11-02)



VICINITY MAP

COURSE DATA	
A	N49°01'15" E 42.40
B	N75°48'10" E 89.45



ASSESSOR PARCEL NO.	DOCUMENT	INSTRUMENT NO.
1	7078-019-005 GRANT DEED	95-1821402
2	7078-019-006 QUITCLAIM DEED	2712/BK D5123, PG. 959
3	7078-019-007 GRANT DEED	03-3515114
4	7078-019-011 GRANT DEED	94-1809223
5	7078-019-009 GRANT DEED	77-1147996
6	7078-019-010 GRANT DEED	06-1424512
7	7078-019-906 QUITCLAIM DEED	4828/BK D5516, PG. 878

THIS DOCUMENT WAS PREPARED BY ME OR UNDER
 MY SUPERVISION

DATED THIS 12th DAY OF September, 2011

[Signature]
 ANNA M. BEAL, L.S. #975
 MY LICENSE EXPIRES: 12/31/2011



LEGEND:

- PROPOSED COUNTY BOUNDARY SHOWN THIS
- EXISTING COUNTY BOUNDARY SHOWN THIS
- ASSESSOR PARCEL NUMBER (TYPICAL)
- 7078-019-011
- () RECORDED PER TRACT NO. 945, M.B. 3/11/12

THIS PROPOSAL DOES MEET WITH THE APPROVAL
 OF THE COUNTY SURVEYOR'S OFFICE.

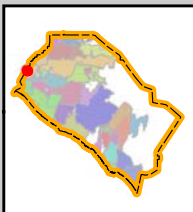
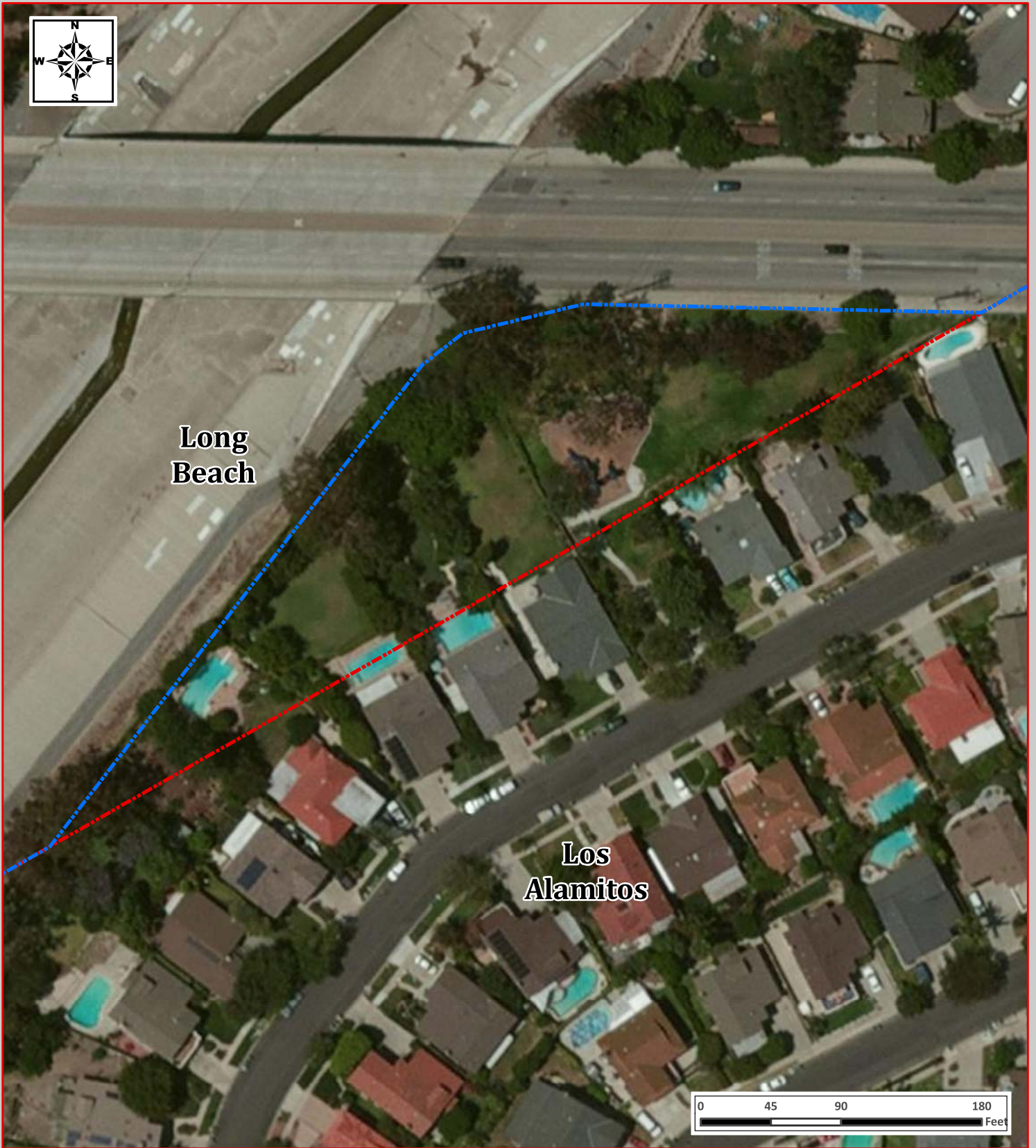
DATED THIS 12th DAY OF September, 2011

[Signature]
 RAYMOND L. MATHE, L.S. 6185
 COUNTY SURVEYOR
 MY LICENSE EXPIRES: 03/31/2012



AREA OF ADJUSTMENT ± 1.30 ACRES

Exhibit 5 - Area 7 Vicinity Map



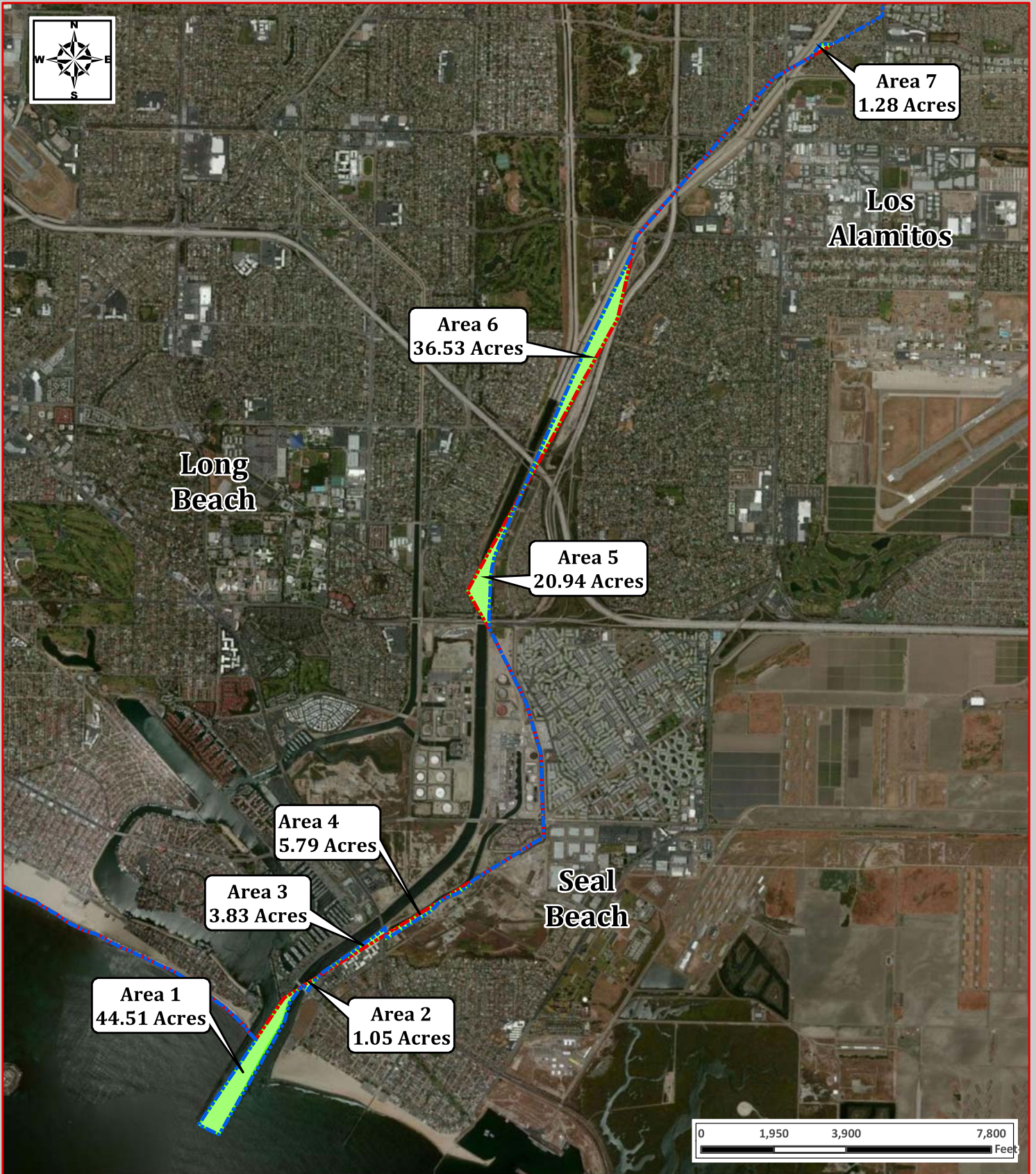
County Boundary Adjustment for the City of Los Alamitos (RO 11-02)

Annexation to the City of Los Alamitos, OC Vector Control District, OC Cemetery District, OC Parks (CSA 26), Orange County Sanitation District, Orange County Water District, Municipal Water District of Orange County, and the Rossmoor-Los Alamitos Area Sewer District

Legend	
	Proposed Boundary
	Existing Boundary

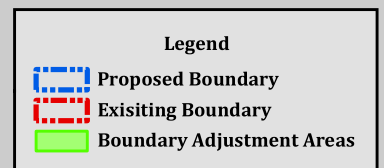
Aerial imagery courtesy of Bing maps; data courtesy of the City of Long Beach and Orange County LAFCO

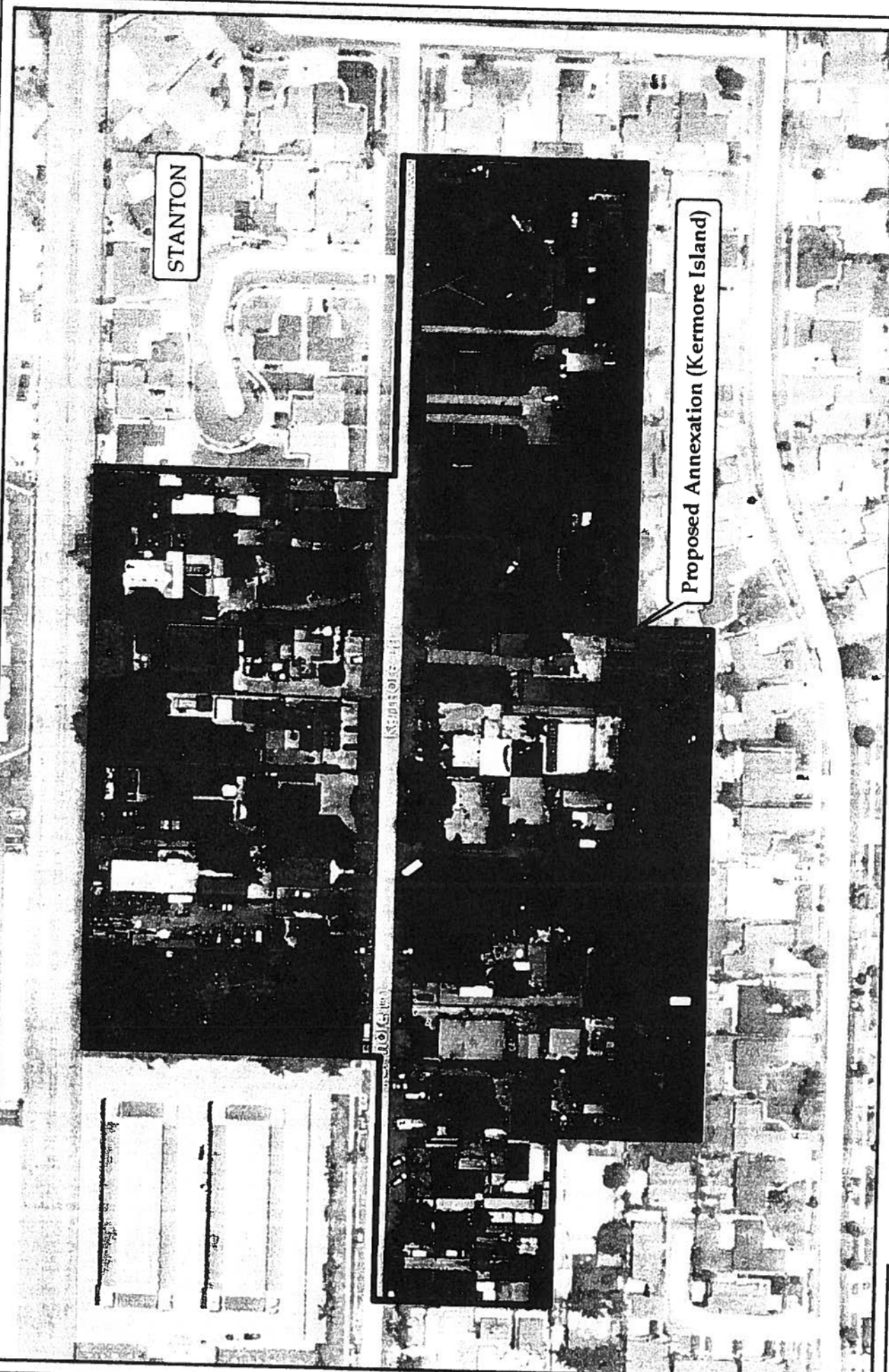
Exhibit 1 - Vicinity Map



Proposed County Boundary Adjustments

*Orange & Los Angeles Counties
Cities of Long Beach, Los Alamitos, and Seal Beach*





Kermore Island Annexation to the City of Stanton - Island #2 (IA 12-03) Vicinity Map

