

Orange County Boundary and Annexation Report 2010-2011 (January 1)



1. Southern Island Annexation to Fountain Valley (IA 09-16)
2. Ortega/La Pata Annexation to San Juan Capistrano (CA 09-19)

	January 1, 2011 Jurisdictions
	January 1, 2010 Jurisdictions

Source: OC Geomatics, 2010 & 2011
 Note: Coastal boundary represents mean high tide circa 2015. Coastal boundary approximated by CDR GIS staff.

Orange County Boundary and Annexation Report 2010-2011

Detailed Annexation List:

- 1) Southern Island Annexation to the City of Fountain Valley (IA 09-16)
Effective: 1/14/2010
From Unincorporated Orange County to Fountain Valley
Uninhabited
10.45 acres (0.01633 sq. miles)
- 2) Ortega/La Pata Annexation to the City of San Juan Capistrano (CA 09-19)
Effective: 1/20/2010
From Unincorporated Orange County to San Juan Capistrano
Uninhabited (neighborhood park)
131.534 acres (0.20552 sq. miles)

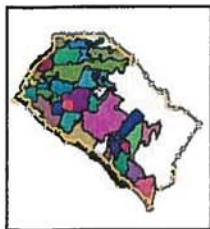
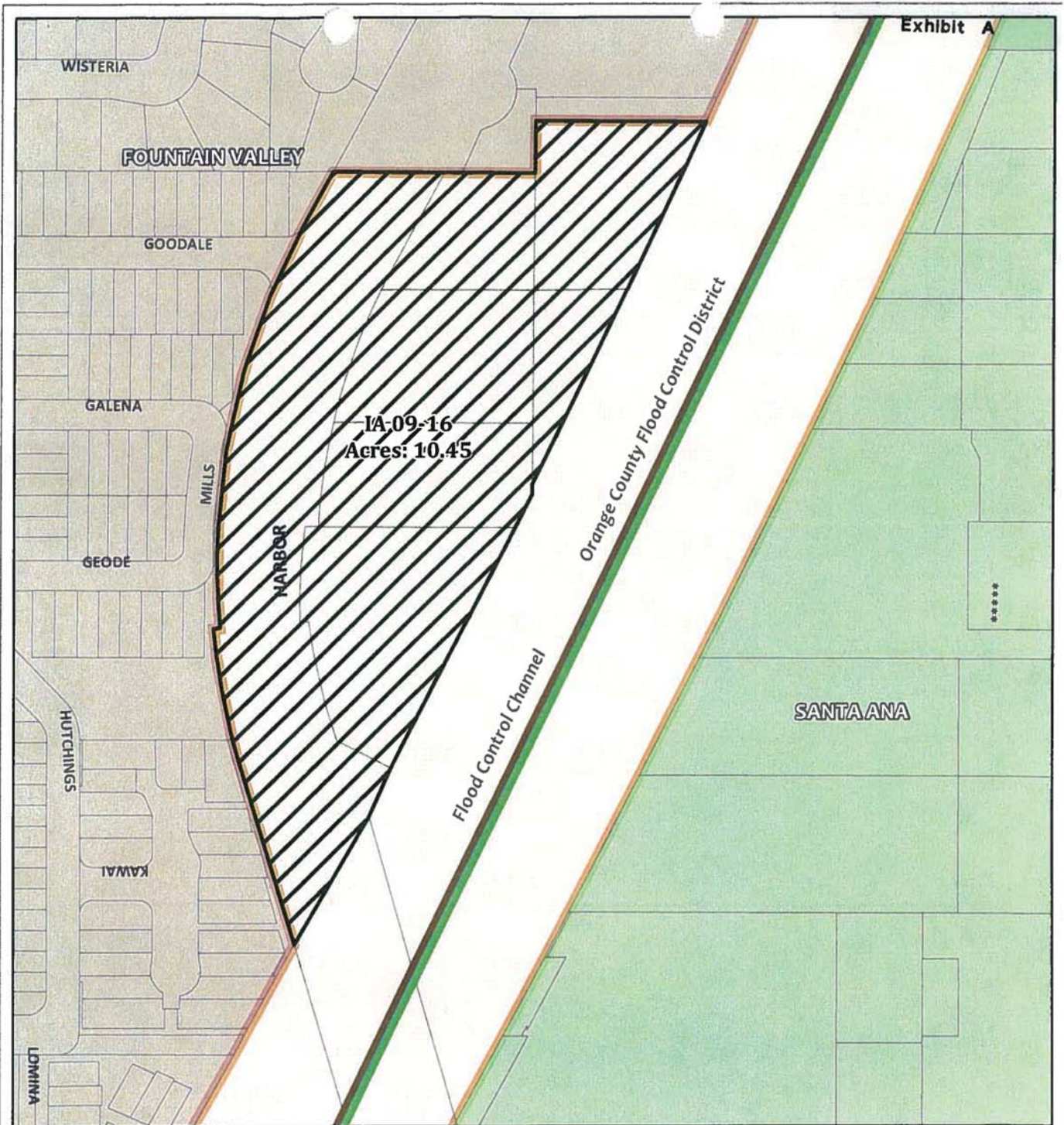
Jurisdiction	Total Area (Square Miles)*		Area Change 2010-2011**	Annexation Reference #
	January 1, 2010	January 1, 2011		
Aliso Viejo	6.921	6.921	0	
Anaheim	50.872	50.872	0	
Brea	12.221	12.221	0	
Buena Park	10.550	10.550	0	
Costa Mesa	15.827	15.827	0	
Cypress	6.622	6.622	0	
Dana Point	6.602	6.602	0	
Fountain Valley	9.048	9.065	0.016	1
Fullerton	22.447	22.447	0	
Garden Grove	17.923	17.923	0	
Huntington Beach	27.402	27.402	0	
Irvine	65.969	65.969	0	
Laguna Beach	8.932	8.932	0	
Laguna Hills	6.647	6.647	0	
Laguna Niguel	14.787	14.787	0	
Laguna Woods	3.306	3.306	0	
La Habra	7.360	7.360	0	
Lake Forest	16.785	16.785	0	
La Palma	1.804	1.804	0	
Los Alamitos	4.089	4.089	0	
Mission Viejo	17.933	17.933	0	
Newport Beach	25.984	25.984	0	
Orange	25.783	25.783	0	
Placentia	6.621	6.621	0	
Rancho Santa Margarita	12.937	12.937	0	
San Clemente	18.357	18.357	0	
San Juan Capistrano	14.201	14.407	0.206	2
Santa Ana	27.352	27.352	0	
Seal Beach	11.991	11.991	0	
Stanton	3.087	3.087	0	
Tustin	11.137	11.137	0	
Villa Park	2.078	2.078	0	
Westminster	10.070	10.070	0	
Yorba Linda	19.867	19.867	0	
Unincorporated	276.404	276.183	-0.222	1,2
Orange County	799.920	799.920	0	

Source: O.C. Geomatics, 2010 & 2011

*Area calculated in ArcGIS by CDR.

**Annual area change totals may not match detailed annexation information due to rounding.

Notes:
Benchmark 2015.
Some jurisdictions' legal boundary extends three miles off the coast.
A fixed boundary line at the coast was created in November 2014 based on high-resolution county-wide aerial imagery that was captured on June 19, 2013, to approximate the ocean waterline and to eliminate artificial land area changes to jurisdictions adjacent to the Orange County coast. This coast line does not define any vertical datum such as mean high tide, mean sea level, or mean lower low tide. This reference line was developed through a collaboration of OC Public Works, OC LAFCO, and CDR; it has no legal value; and its purpose is for CDR's use in reporting population density and jurisdictional annexations.
For official legal boundaries, contact the County of Orange Surveyor's office <http://ocpublicworks.com/survey/>



F:\gis\projects\IA09-16\A0916_VicinityMap.pdf

Vicinity Map
Southern Island Annexation to the City of Fountain Valley
IA 09-16



0 450 Feet

A horizontal scale bar with markings at 0 and 450 feet.

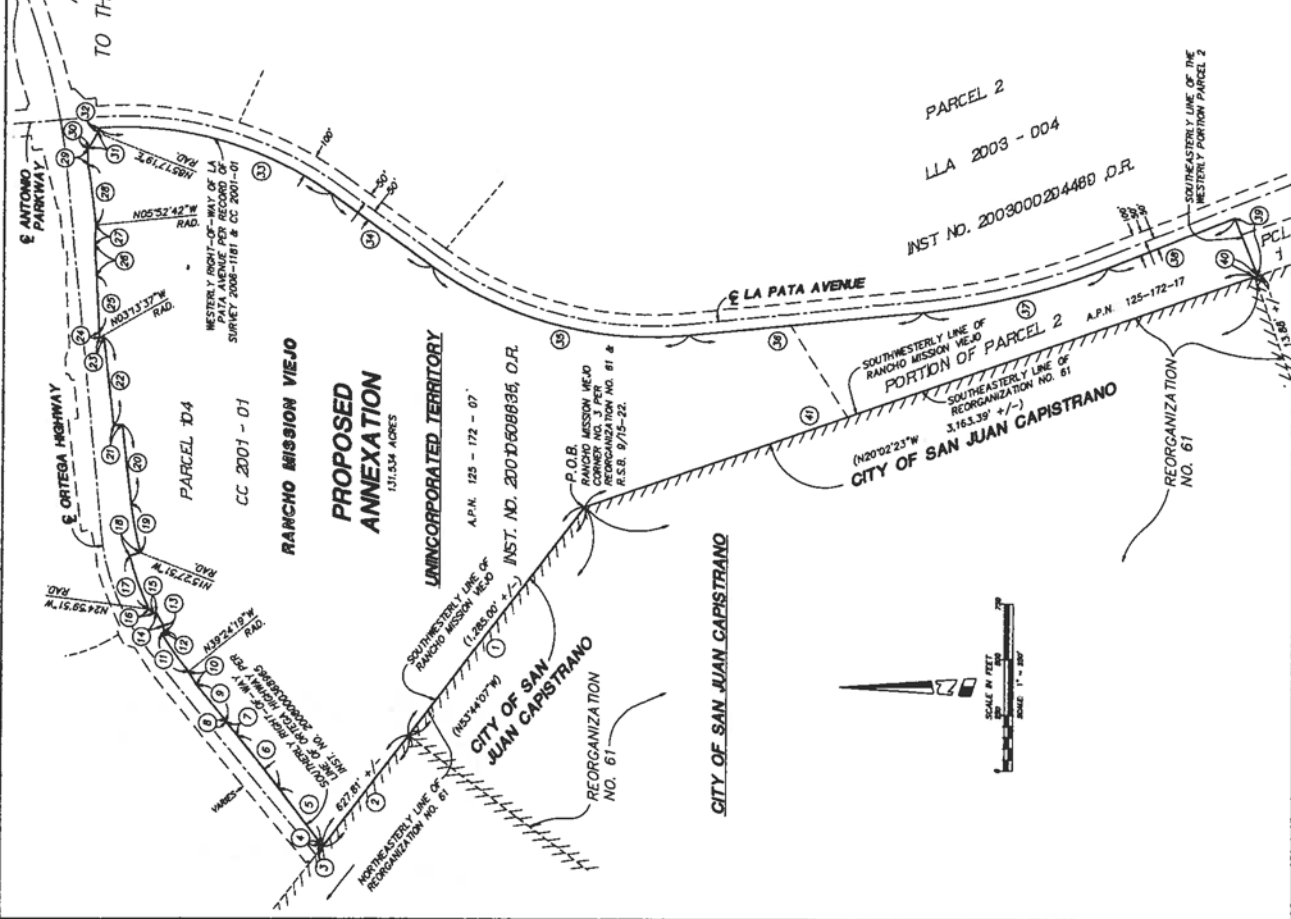
- Spheres of Influence**
- IA 09-16
 - Fountain Valley
 - Santa Ana

- City Boundaries**
- Fountain Valley
 - Santa Ana
 - Unincorporated OC

9/25/2009

EXHIBIT 'B'

ANNEXATION NO. CA 09 - 19
 TO THE CITY OF SAN JUAN CAPISTRANO



DATA TABLE

NO.	BEARING / DELTA	RADIUS	LENGTH
1	N65°37'24" W	1,285.00'	627.61'
2	N52°57'24" W	627.61'	15.49'
3	S53°03'00" E	15.49'	3.90'
4	N43°03'40" E	3.90'	299.81'
5	Δ-02°26'13"	7,044.30'	81.26'
6	N50°07'27" E		3.07'
7	S39°25'52" E		210.25'
8	N50°57'08" E		11.71'
9	Δ-08°17'50"	1,474.08'	29.84'
10	S25°11'17" E		11.07'
11	N67°22'21" E		29.84'
12	N67°22'21" E		68.00'
13	N61°08'38" E		11.61'
14	N59°11'59" W		36.05'
15	N42°00'15" E		50.97'
16	N42°00'15" E		50.97'
17	S12°23'15" E	1,550.00'	224.13'
18	Δ-08°40'38"	1,480.00'	35.77'
19	N63°12'45" E		35.77'
20	N65°17'45" E		40.00'
21	N65°17'45" E		400.00'
22	N63°12'45" E		19.74'
23	Δ-01°54'42"		19.74'
24	N65°30'14" E	6,328.27'	258.57'
25	N65°30'14" E		138.48'
26	Δ-01°54'42"	4,378.70'	90.83'
27	S57°41'55" E		275.99'
28	Δ-01°28'38"	4,591.70'	71.89'
29	S10°13'51" E		84.63'
30	S10°13'51" E		162.27'
31	S50°24'57" E	1,550.00'	561.99'
32	N65°18'40" E		1,204.79'
33	Δ-40°46'40"	1,550.00'	1,053.07'
34	S28°03'59" W		1,053.07'
35	S28°03'59" W		618.20'
36	Δ-18°00'41"	3,050.00'	278.83'
37	S21°46'53" E		13.68'
38	S68°12'07" W		3,163.19'
39	N18°17'44" W		
40	N18°17'44" W		
41	N18°17'44" W		



NOTE
 THIS ANNEXATION CONTAINS 131.534 ACRES.
 ASSESSORS PARCEL NUMBERS 125-172-07
 125-172-17
 (000) INDICATES RECORD PER ADJOINING ANNEXATIONS.

LEGEND
 7777 INDICATES EXISTING CITY OF SAN JUAN CAPISTRANO BOUNDARY
 --- INDICATES PROPOSED ANNEXATION BOUNDARY



THIS PROPOSAL DOES MEET THE APPROVAL OF THE GRANDE COUNTY SURVEYORS OFFICE
 DATED THIS 12TH DAY OF NOVEMBER, 2008
 BY: *[Signature]*
 JAMES L. WALKER, COUNTY SURVEYOR
 U.S. MAIL, 477 LOCUST CIRCLE, SUITE 101-31-10

SUBMITTER'S CERTIFICATE
 THIS PROPOSAL WAS PREPARED BY ME OR UNDER MY SUPERVISION
 JAMES L. WALKER, RLS, RITS
 DATED 08-20-11



DATE: 11/16/2008
 SHEET NO. 1 OF 1
 PROJECT NO. 09-19-0000

HUITT-ZOLIARS
 400 Huntington, Suite 100, Irvine, CA 92614-0100 (949) 754-8800