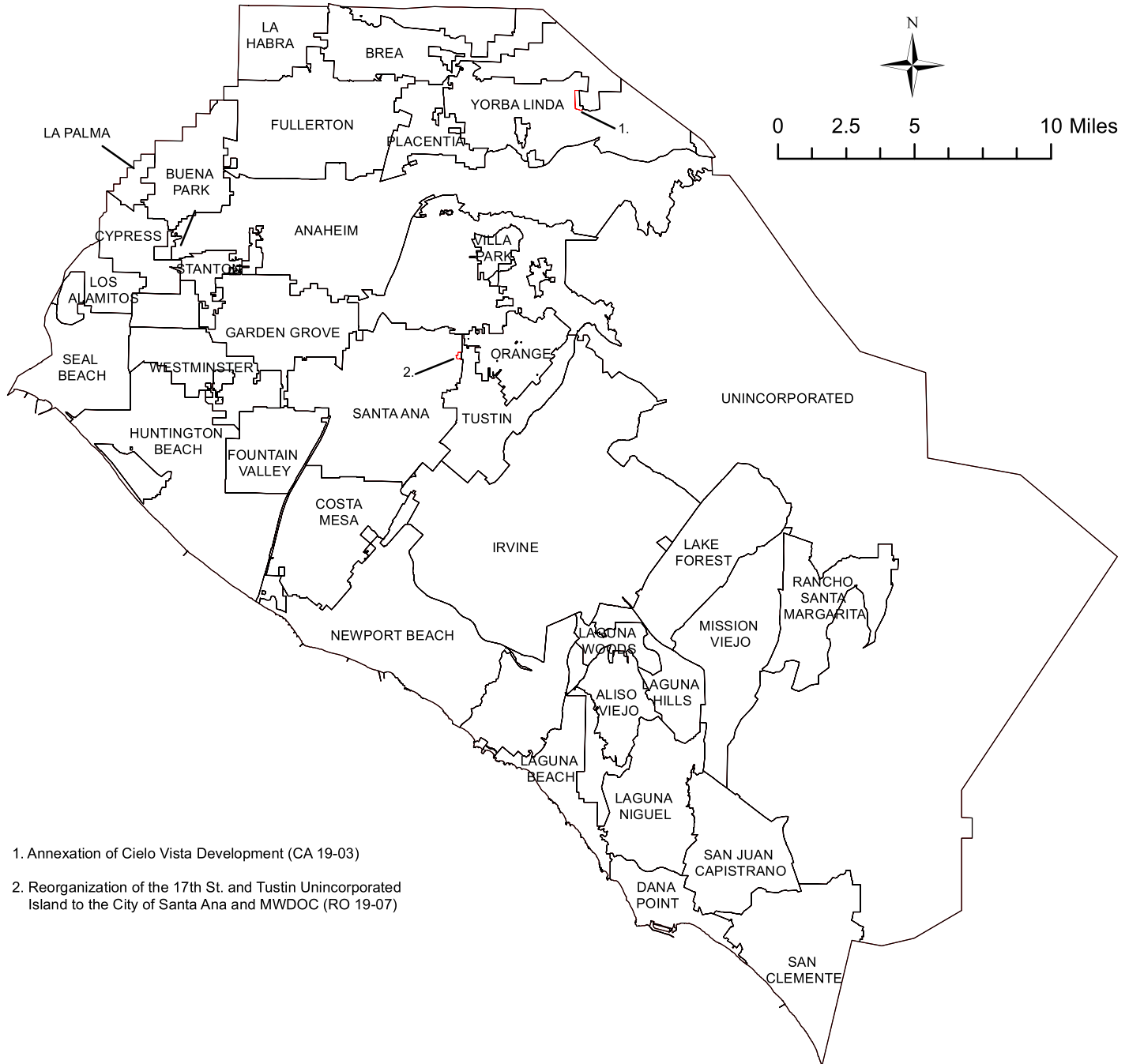


# Orange County Boundary and Annexation Report 2019-2020 (January 1)



Source: OC Geomatics, 2019 & 2020  
 Note: Coastal boundary represents mean high tide circa 2015. Coastal boundary approximated by CDR GIS staff.

**Orange County Boundary and Annexation Report 2019-2020**

**Detailed Annexation List:**

1. Annexation of Cielo Vista Development (CA 19-03)  
 Effective: 12/20/2019  
 From the County of Orange to the City of Yorba Linda  
 Uninhabited  
 84.812 Acres (0.13251875 sq. miles)
  
2. Reorganization of the 17th St. and Tustin Unincorporated Island (RO 19-07)  
 From Unincorporated to the City of Santa Ana and MWDOC  
 Effective: 12/31/2019  
 Inhabited  
 24.79 Acres (0.038734375 sq. miles)

Notes:  
 Benchmark 2015.  
 Some jurisdictions' legal boundary extends three miles off the coast.  
 A fixed boundary line at the coast was created in November 2014 based on high-resolution county-wide aerial imagery that was captured on June 19, 2013, to approximate the ocean waterline and to eliminate artificial land area changes to jurisdictions adjacent to the Orange County coast. This coast line does not define any vertical datum such as mean high tide, mean sea level, or mean lower low tide. This reference line was developed through a collaboration of OC Public Works, OC LAFCO, and CDR; it has no legal value; and its purpose is for CDR's use in reporting population density and jurisdictional annexations.  
 For official legal boundaries, contact the County of Orange Surveyor's office <http://ocpublicworks.com/survey/>

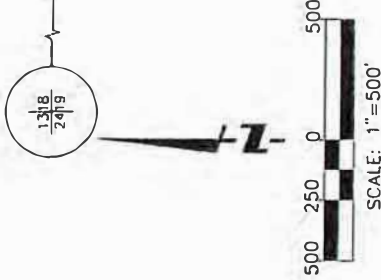
Jurisdiction	Total Area (Square Miles)*		Area Change 2019-2020**	Annexation Reference #
	January 1, 2019	January 1, 2020		
Aliso Viejo	6.921	6.921	0	
Anaheim	50.872	50.872	0	
Brea	12.221	12.221	0	
Buena Park	10.550	10.550	0	
Costa Mesa	15.849	15.849	0	
Cypress	6.622	6.622	0	
Dana Point	6.602	6.602	0	
Fountain Valley	9.065	9.065	0	
Fullerton	22.447	22.447	0	
Garden Grove	17.924	17.924	0	
Huntington Beach	27.612	27.612	0	
Irvine	65.969	65.969	0	
Laguna Beach	8.932	8.932	0	
Laguna Hills	6.647	6.647	0	
Laguna Niguel	14.787	14.787	0	
Laguna Woods	3.306	3.306	0	
La Habra	7.369	7.369	0	
Lake Forest	16.785	16.785	0	
La Palma	1.804	1.804	0	
Los Alamitos	4.091	4.091	0	
Mission Viejo	18.009	18.009	0	
Newport Beach	25.987	25.987	0	
Orange	25.783	25.783	0	
Placentia	6.621	6.621	0	
Rancho Santa Margarita	12.938	12.938	0	
San Clemente	18.357	18.357	0	
San Juan Capistrano	14.407	14.407	0	
Santa Ana	27.352	27.390	0.038	2
Seal Beach	11.880	11.880	0	
Stanton	3.105	3.105	0	
Tustin	11.137	11.137	0	
Villa Park	2.078	2.078	0	
Westminster	10.070	10.070	0	
Yorba Linda	19.867	20.000	0.133	1
Unincorporated	275.844	275.674	-0.171	1,2
<b>Orange County</b>	<b>799.811</b>	<b>799.811</b>	<b>0</b>	

Source: O.C. Geomatics, 2019 & 2020

\*Area calculated in ArcGIS by CDR.

\*\*Annual area change totals may not match detailed annexation information due to rounding.

SHEET 1 OF 1



CITY OF YORBA LINDA

NORTHEAST BOUNDARY CORNER (B)  
 SECTION 18  
 SECTION 19  
 T.35. R.8W  
 S.B.M.

RANCHO CAÑON DE SANTA ANA LINE OF OCCUPATION  
 S86°47'07"E 281.78'

S87°05'05"E 583.21'  
 S86°47'07"E 281.78'

NORTHEAST BOUNDARY CORNER (D)

**BOUNDARY REFERENCE NOTES:**

- (A) ANNEXATION NO. 78-02, BOOK 12810, PAGE 389, O.R.
  - (B) ANNEXATION NO. 75-2, BOOK 11535, PAGE 462, O.R.
  - (C) ANNEXATION NO. 80-01, BOOK 14294, PAGE 505, O.R. AND BOOK 14294, PAGE 510, O.R.
  - (D) PARCEL MAP NO. 2016-156 P.M.B., 40023-30
  - ( ) RECORD PER EXISTING CITY BOUNDARY (A)
- XXX-XXX-XX ASSESSOR PARCEL NUMBER

PORION OF THE RANCHO OF THE GARFILLO PROPERTY

351-031-04

PM NO. 2016-156 P.M.B., 40023-30

351-031-17

CITY OF YORBA LINDA

UNINCORPORATED TERRITORY OF THE COUNTY OF ORANGE



PREPARED BY ME OR UNDER MY DIRECT SUPERVISION:  
  
 KURT R. TROXELL, L.S. 7854 7/10/2019



VICINITY MAP  
 NOT TO SCALE

THIS DESCRIPTION AND MAP OF PROPOSED ANNEXATION DOES MEET THE APPROVAL OF THE ORANGE COUNTY SURVEYOR'S OFFICE.  
 DATED THIS 17th DAY OF July, 2019

KEVIN R. HILLS, COUNTY SURVEYOR  
 L.S. 8617  
  
 BY: LILY M. N. SANDBERG, DEPUTY SURVEYOR  
 P.L.S. 8402

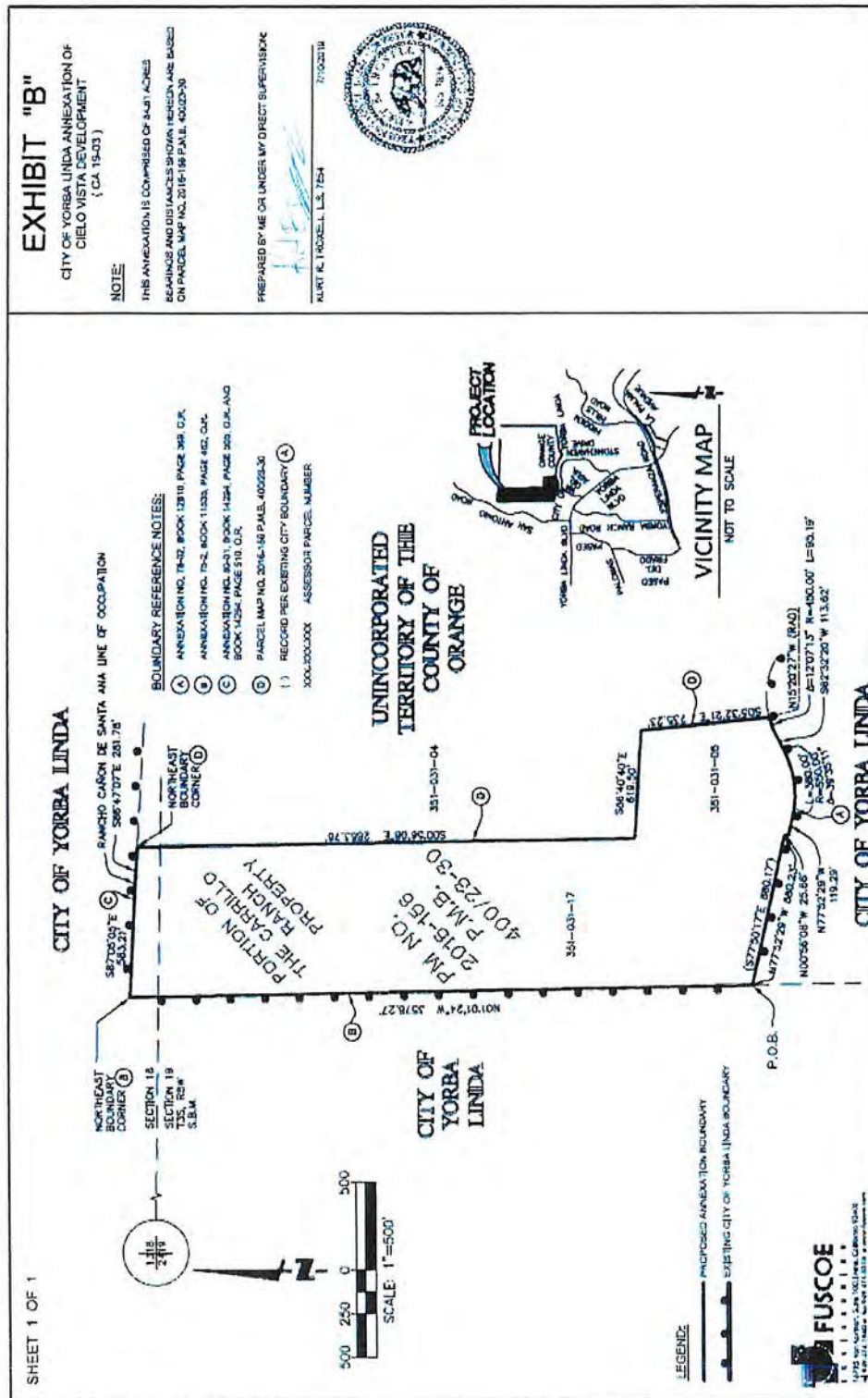


LEGEND:  
 PROPOSED ANNEXATION BOUNDARY  
 EXISTING CITY OF YORBA LINDA BOUNDARY

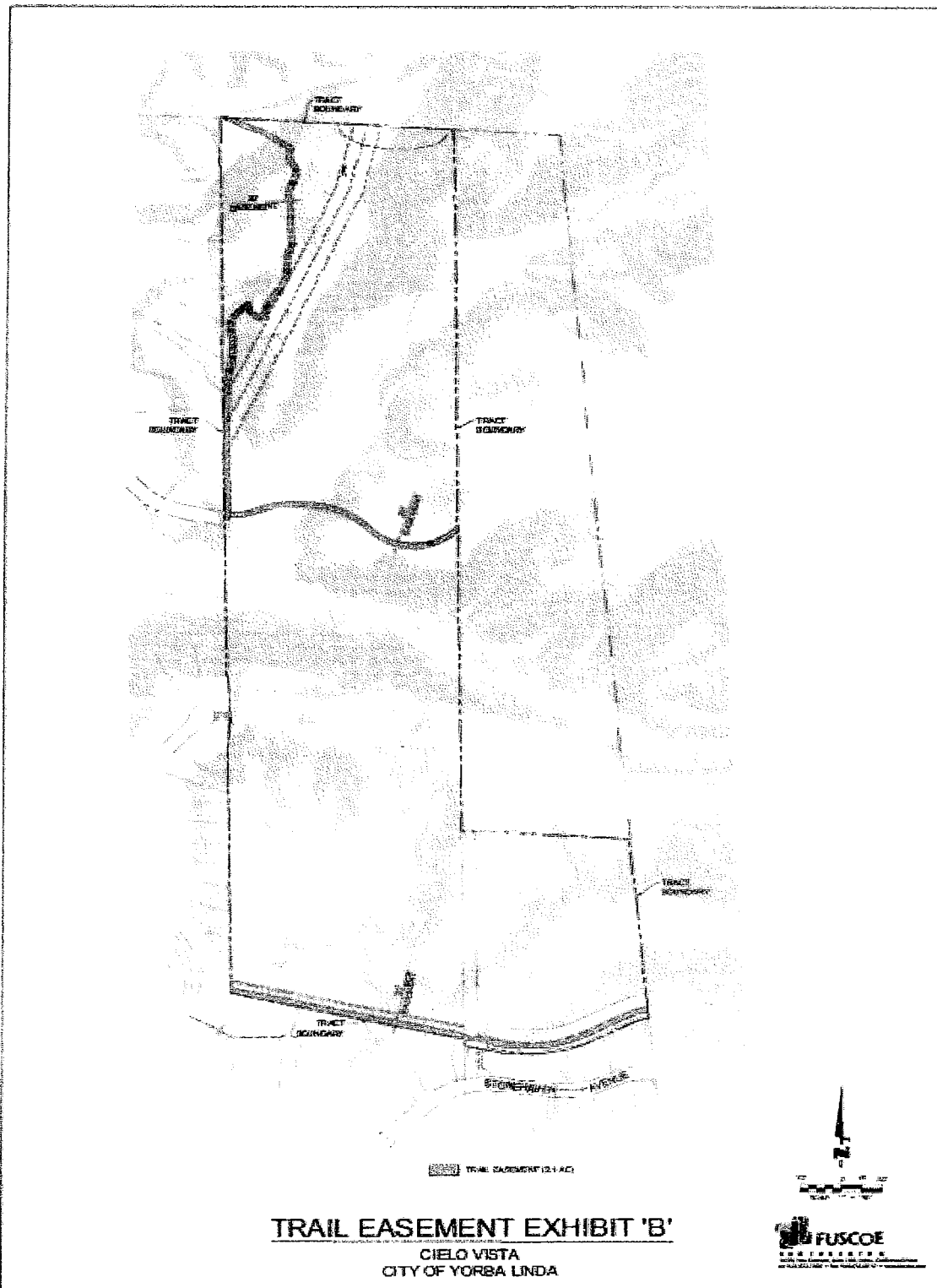
**FUSCOE**  
 ENGINEERING  
 16975 Van Kesteren, Suite 100, Irvine, California 92640  
 (949) 474-1868 • (949) 474-3219 • www.fuscoe.com

\\s01p001\226\F001\LFSC01\226-001\LF00.DWG (07-10-19)

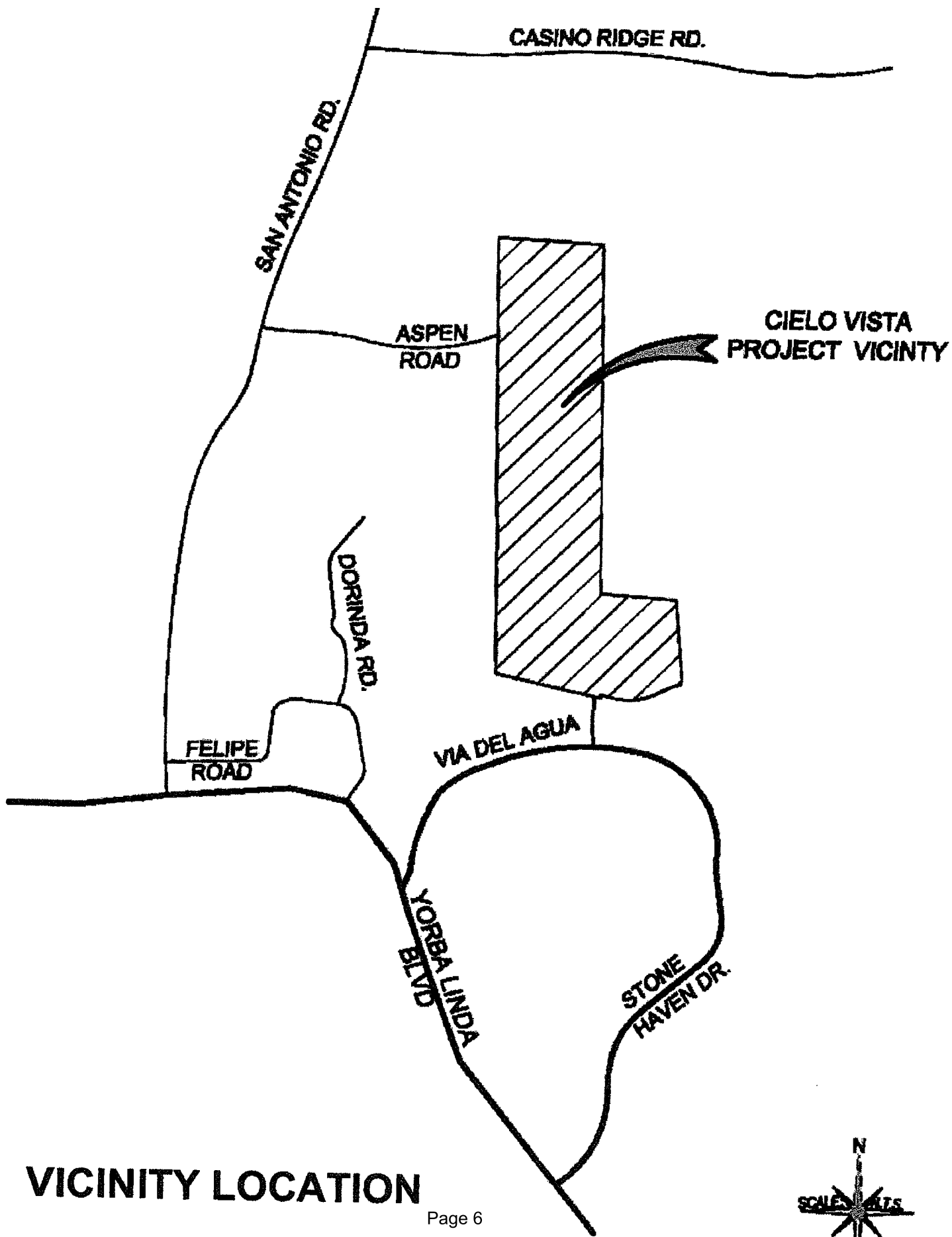
**EXHIBIT B**



## EXHIBIT "B" TRAIL ALIGNMENTS



### EXHIBIT "A"



## VICINITY LOCATION

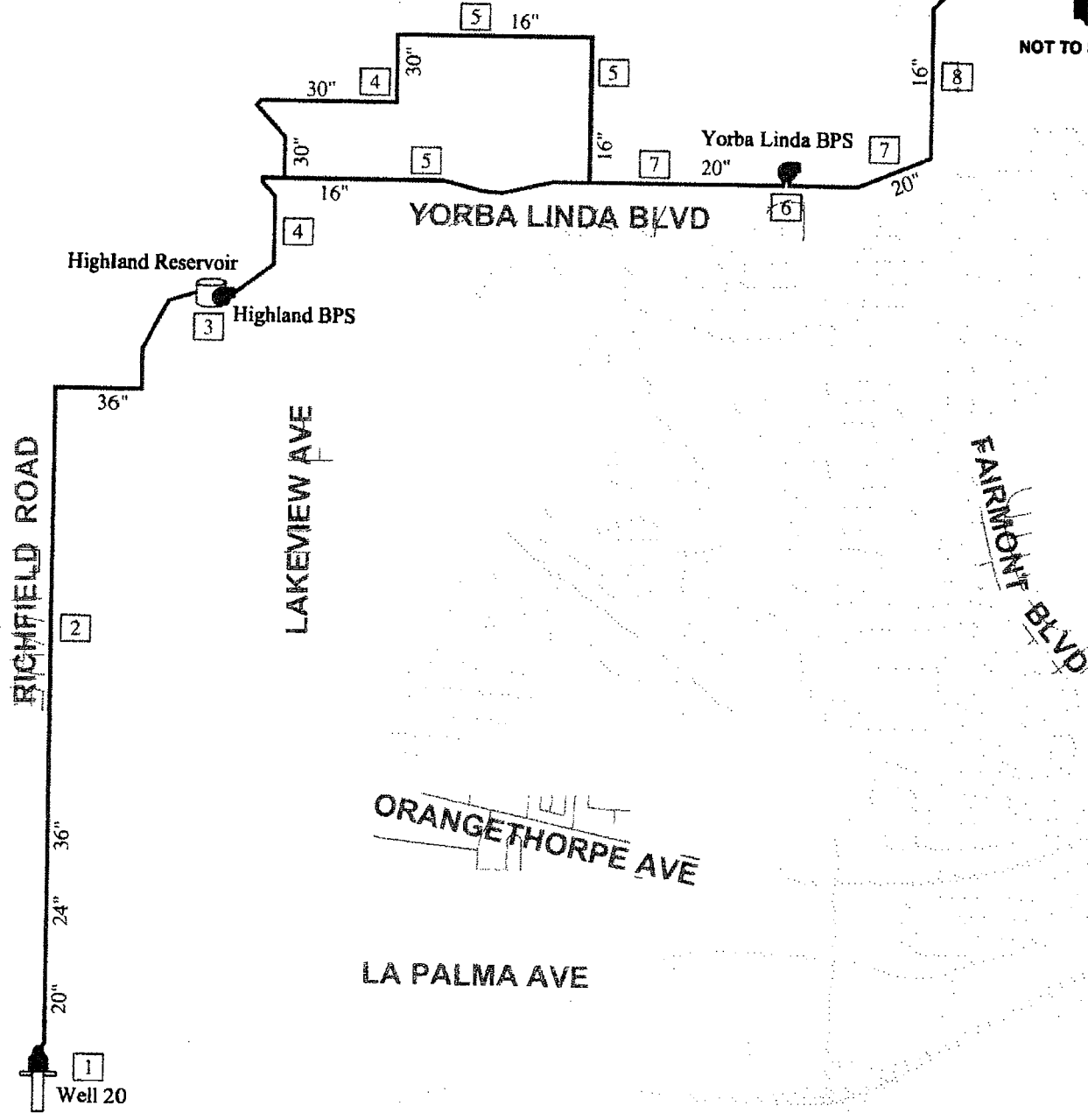
EXHIBIT "D"

IMPERIAL HWY

Fairmont Reservoir  
Fairmont BPS

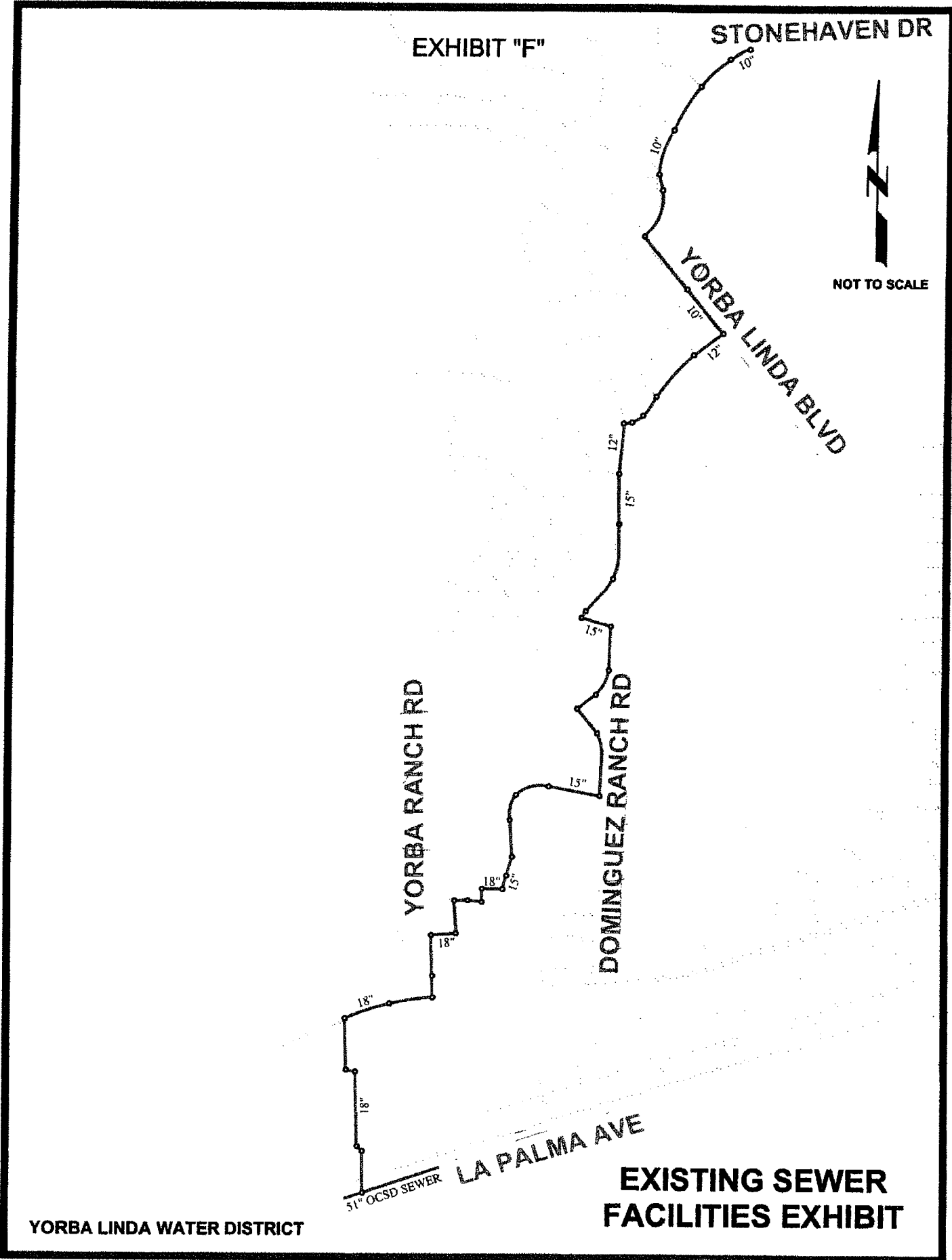


NOT TO SCALE



YORBA LINDA WATER DISTRICT

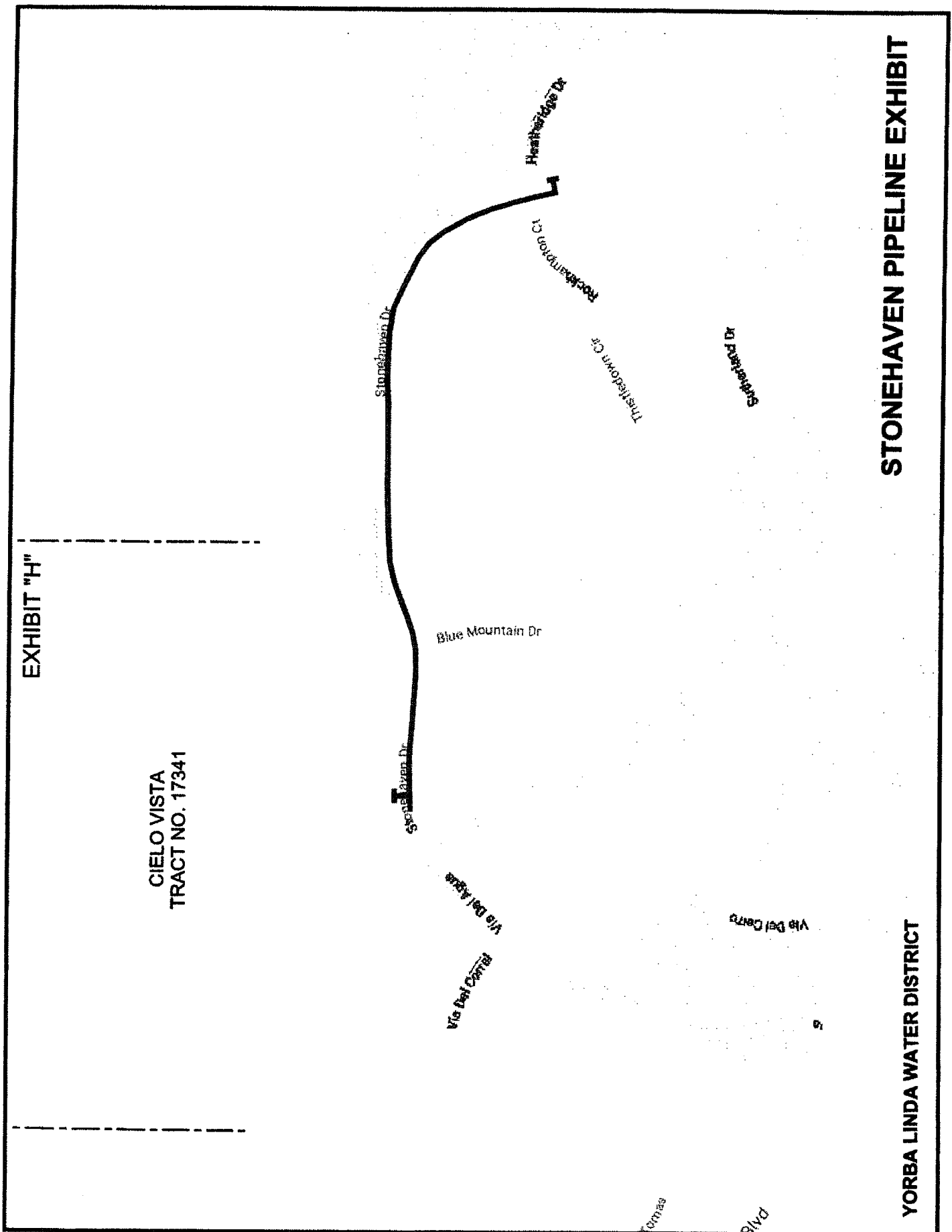
EXISTING WATER  
FACILITIES EXHIBIT



YORBA LINDA WATER DISTRICT

**EXISTING SEWER  
FACILITIES EXHIBIT**





**STONEHAVEN PIPELINE EXHIBIT**

**YORBA LINDA WATER DISTRICT**

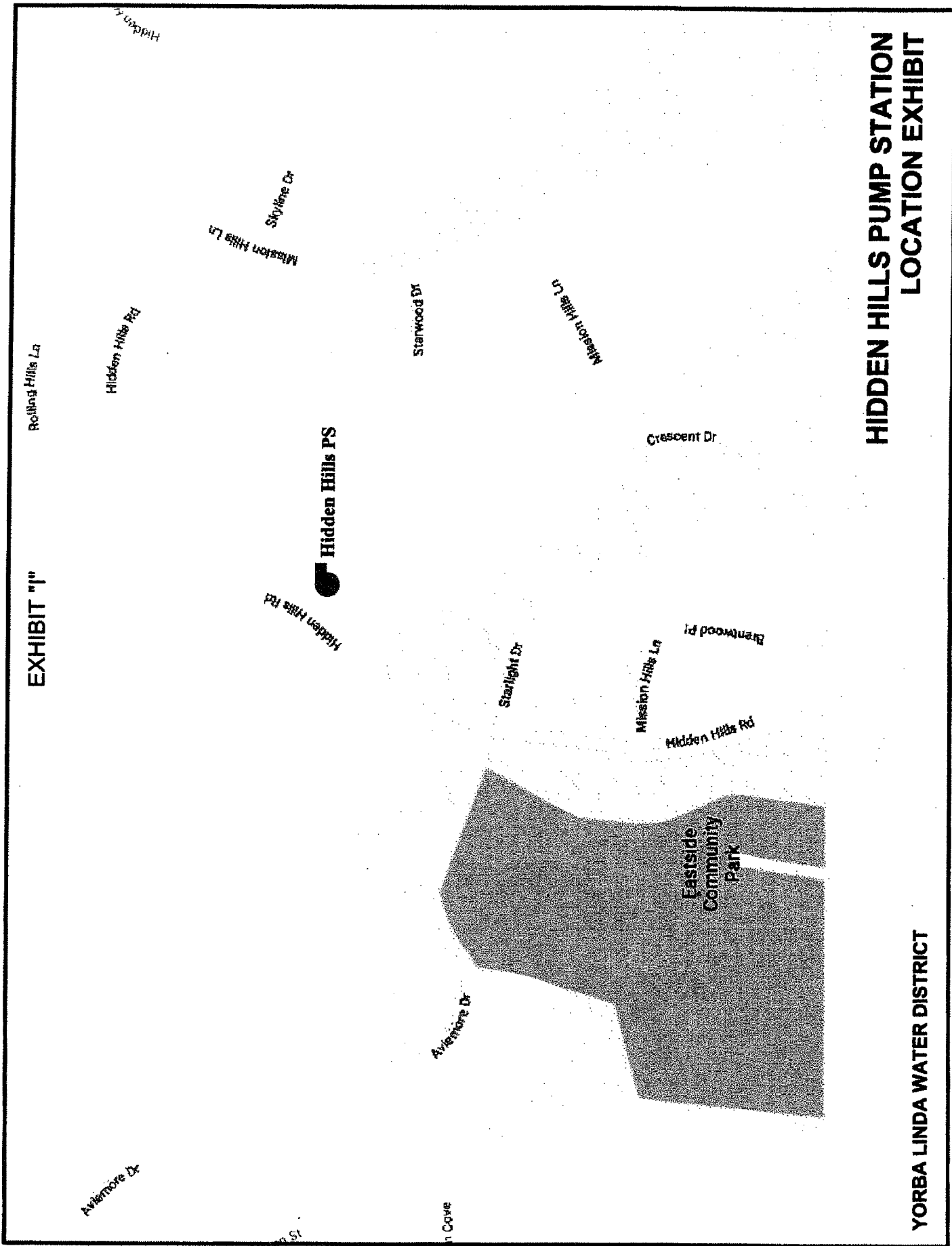
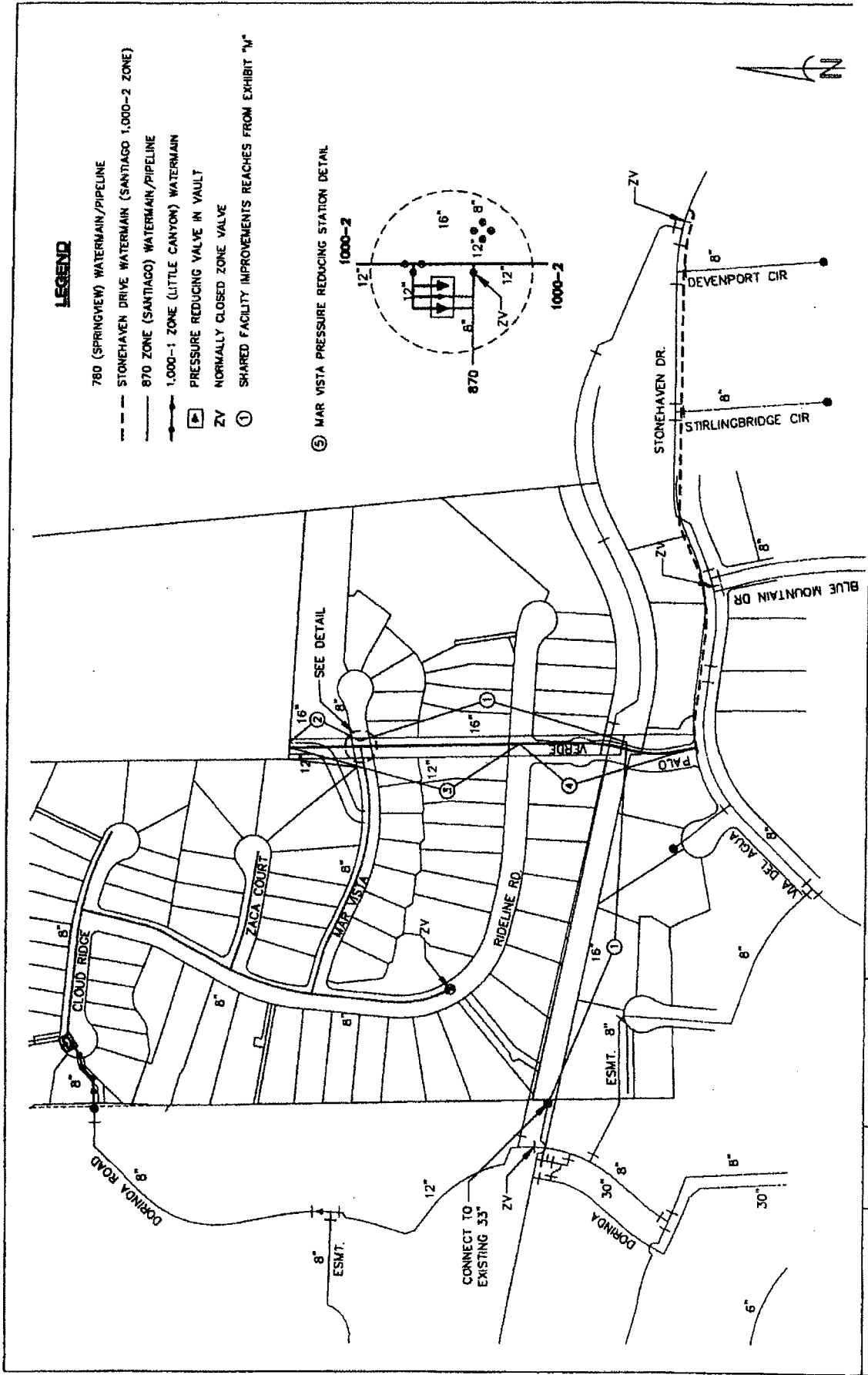


EXHIBIT "I"

**HIDDEN HILLS PUMP STATION  
LOCATION EXHIBIT**

**YORBA LINDA WATER DISTRICT**



**LEGEND**

- 780 (SPRINGVIEW) WATERMAIN/PIPELINE
- STONEHAVEN DRIVE WATERMAIN (SANTIAGO 1,000-2 ZONE)
- 870 ZONE (SANTIAGO) WATERMAIN/PIPELINE
- 1,000-1 ZONE (LITTLE CANYON) WATERMAIN
- PRESSURE REDUCING VALVE IN VAULT
- NORMALLY CLOSED ZONE VALVE
- ① SHARED FACILITY IMPROVEMENTS REACHES FROM EXHIBIT 'M'

⑤ MAR VISTA PRESSURE REDUCING STATION DETAIL

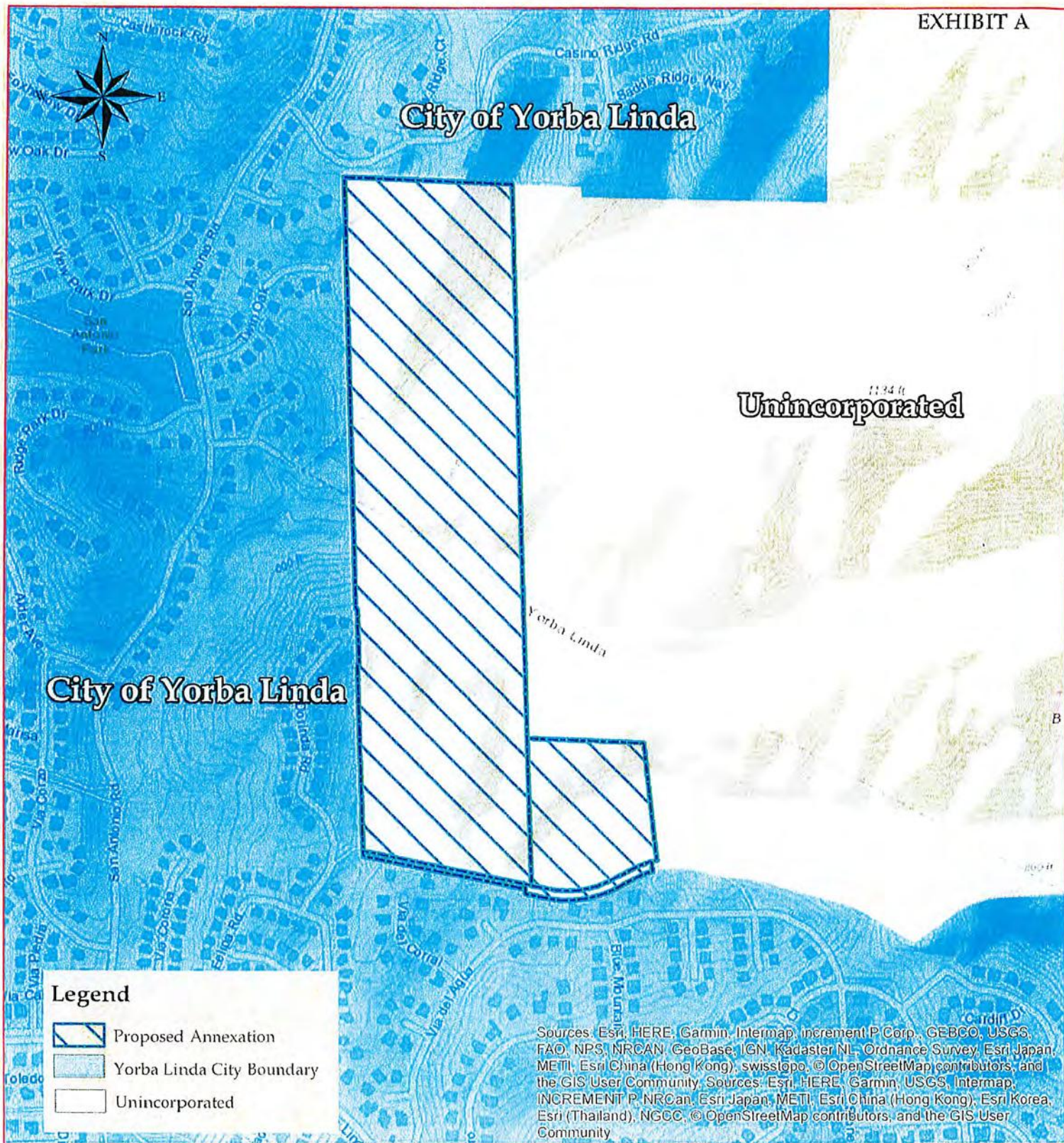
**EXHIBIT 'N'**

"SHARED FACILITY IMPROVEMENTS"  
 (AS DESCRIBED ON EXHIBIT "M")

YVES LINDA WATER DISTRICT  
 17475 LINDA AVE  
 VAN NUYS, CA 91411  
 (818) 781-3000



**P.S.O.M.A.S.**  
 1400 S. BASIN AVE. SUITE 200  
 SAN JOSE, CA 95128  
 (408) 261-1000  
 FAX (408) 261-1001  
 WWW.PSOMAS.COM



City of Yorba Linda Annexation of  
 Cielo Vista Development (CA 19-03)



EXHIBIT C

EXHIBIT "B"  
TRAIL ALIGNMENTS

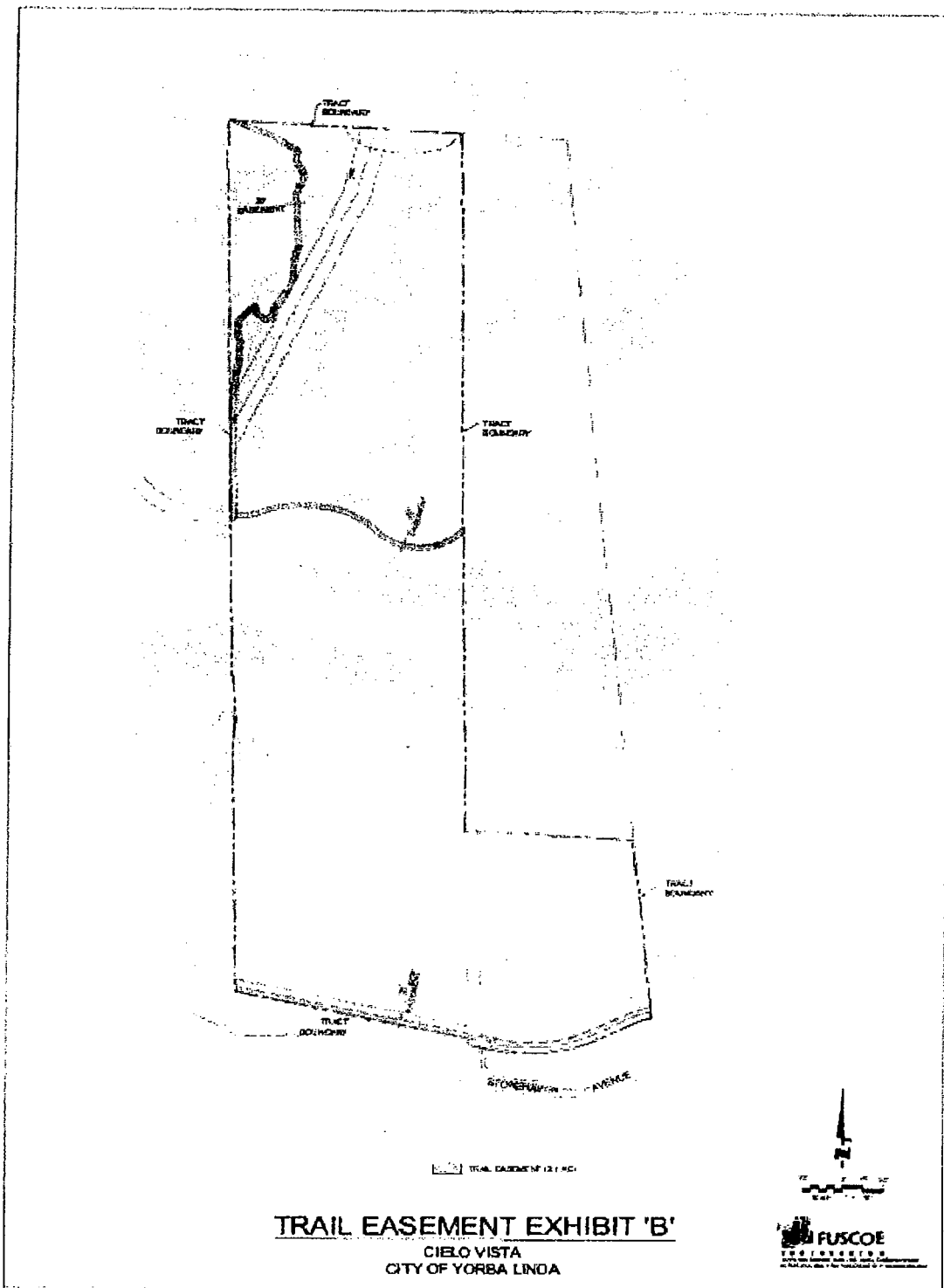


EXHIBIT B

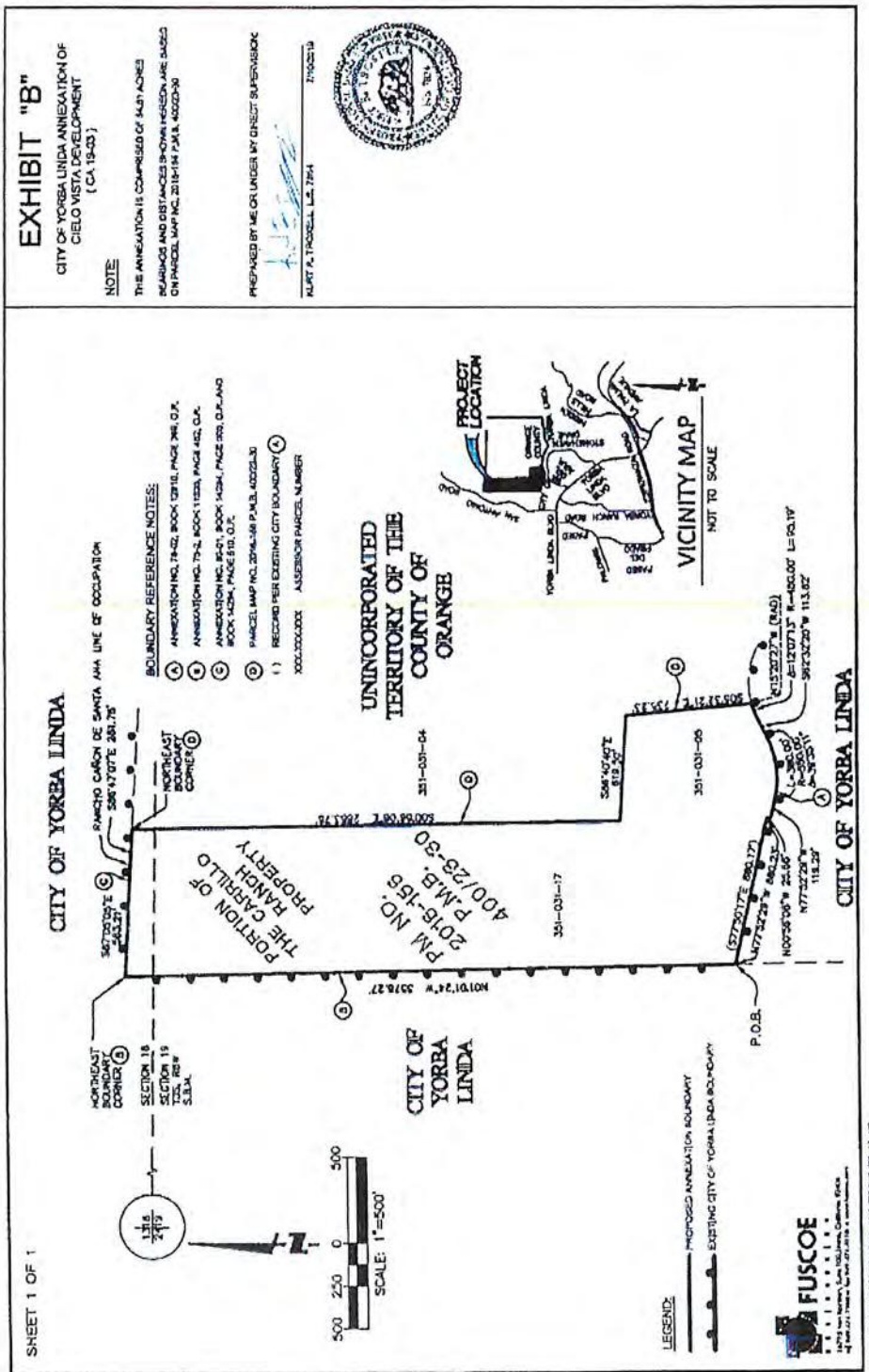
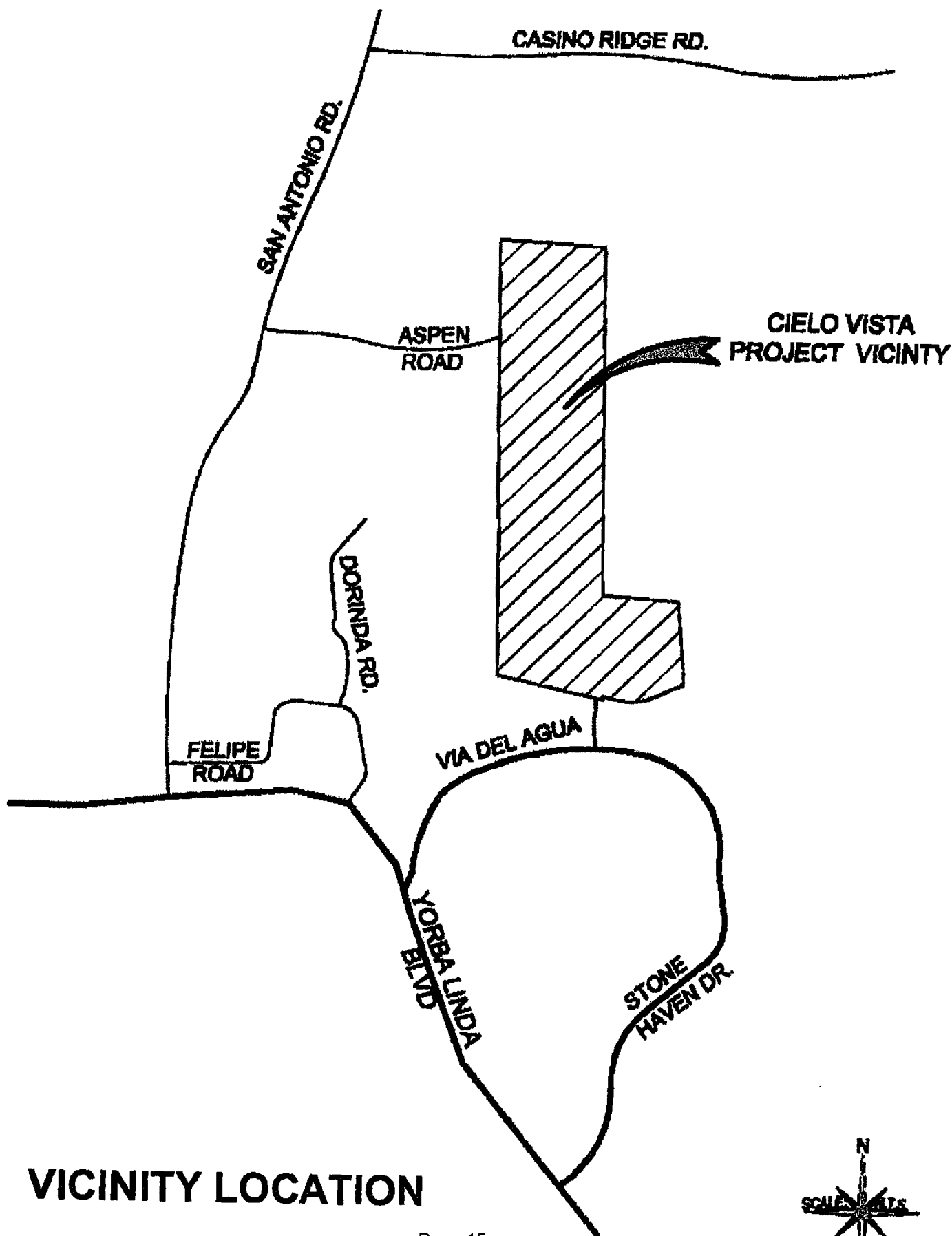


EXHIBIT "A"

EXHIBIT E



VICINITY LOCATION



EXHIBIT E

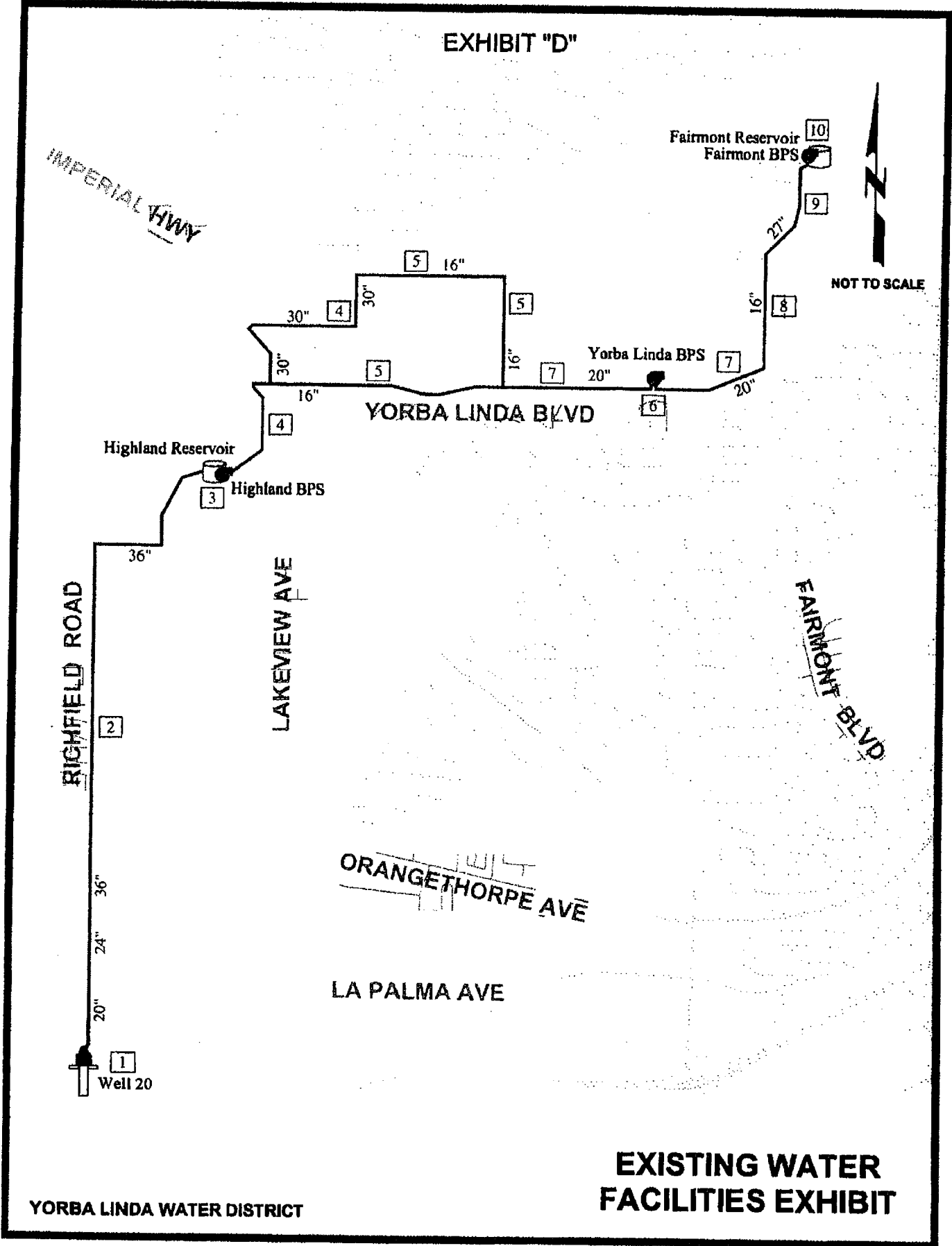
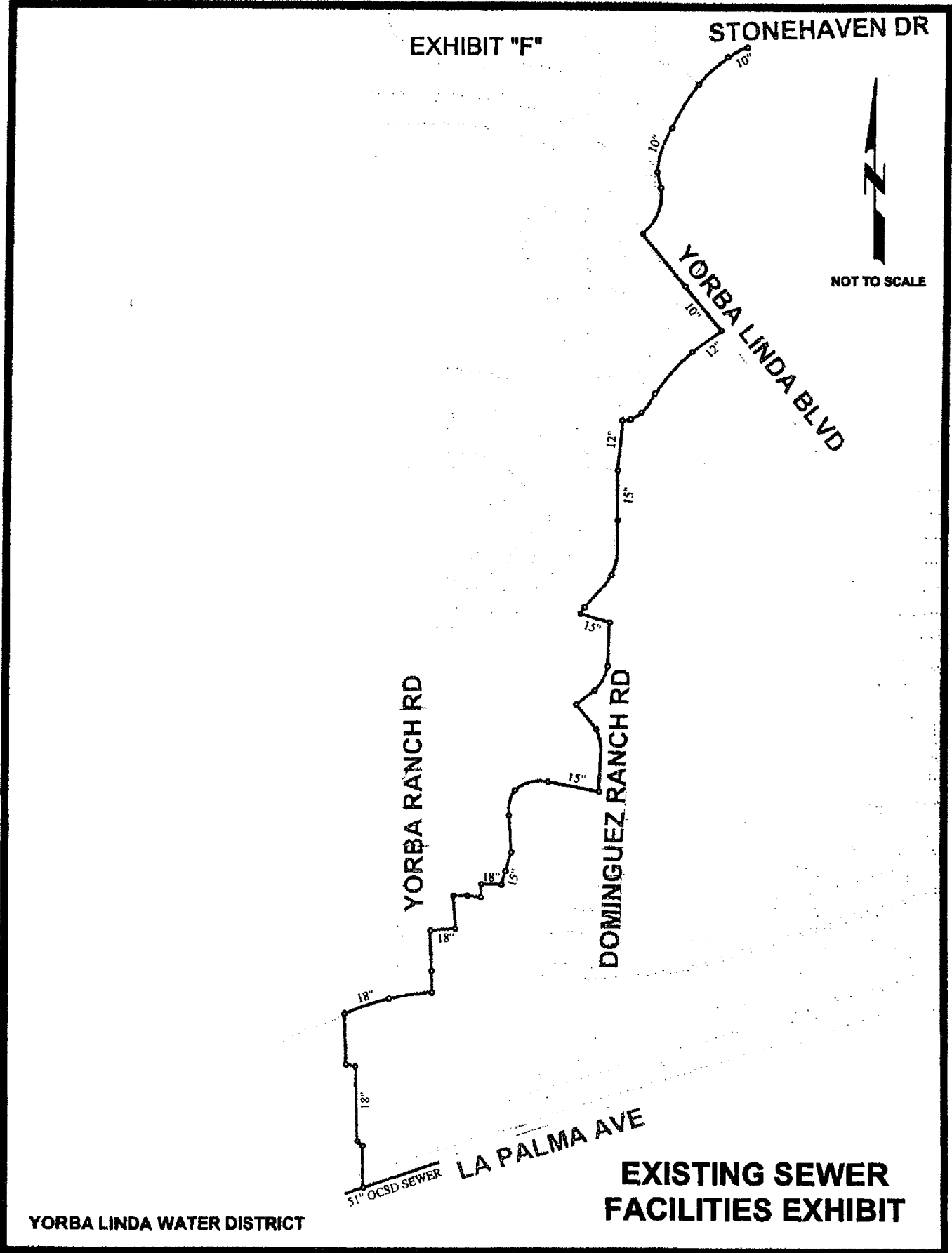




EXHIBIT E



YORBA LINDA WATER DISTRICT

EXISTING SEWER  
FACILITIES EXHIBIT

EXHIBIT E

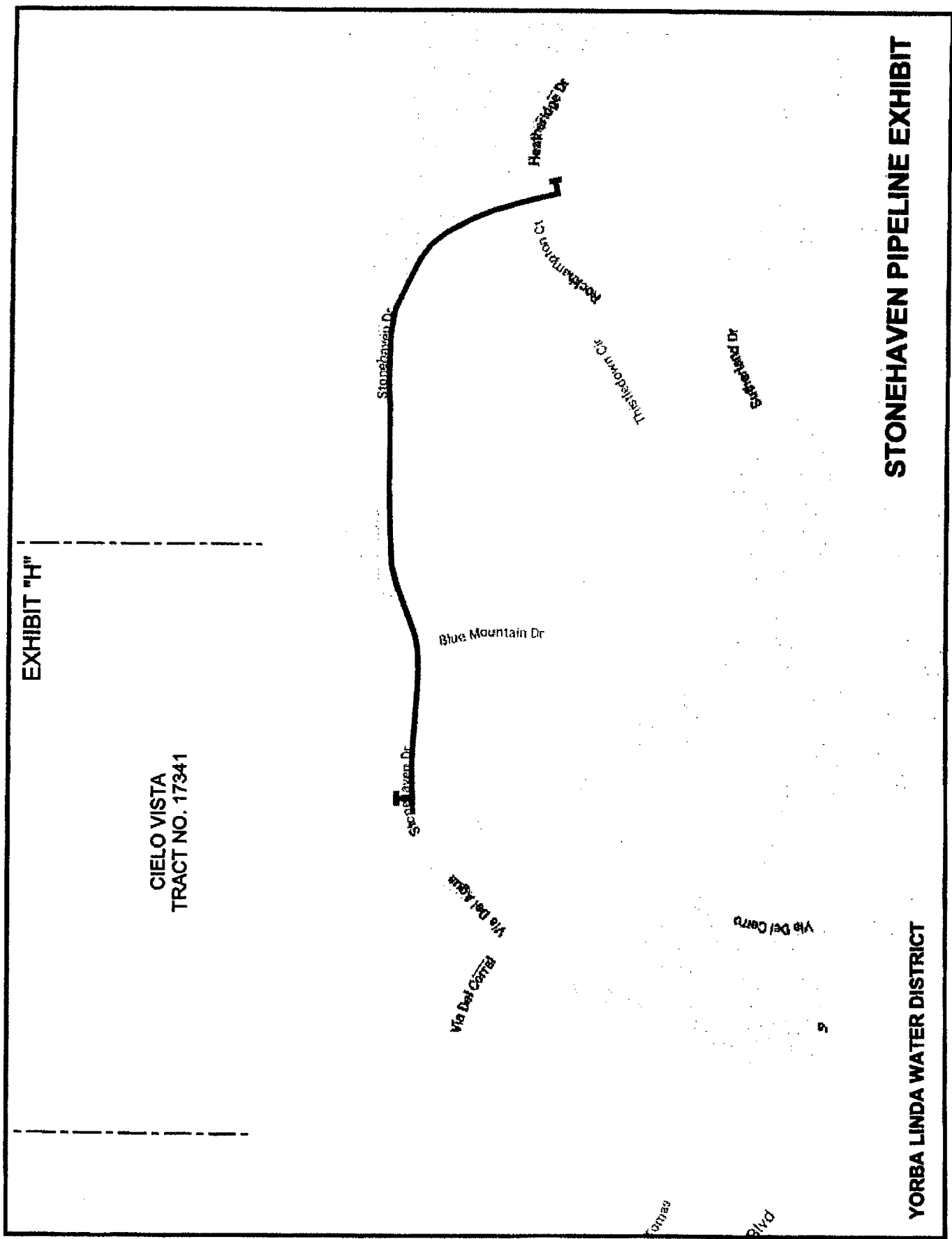
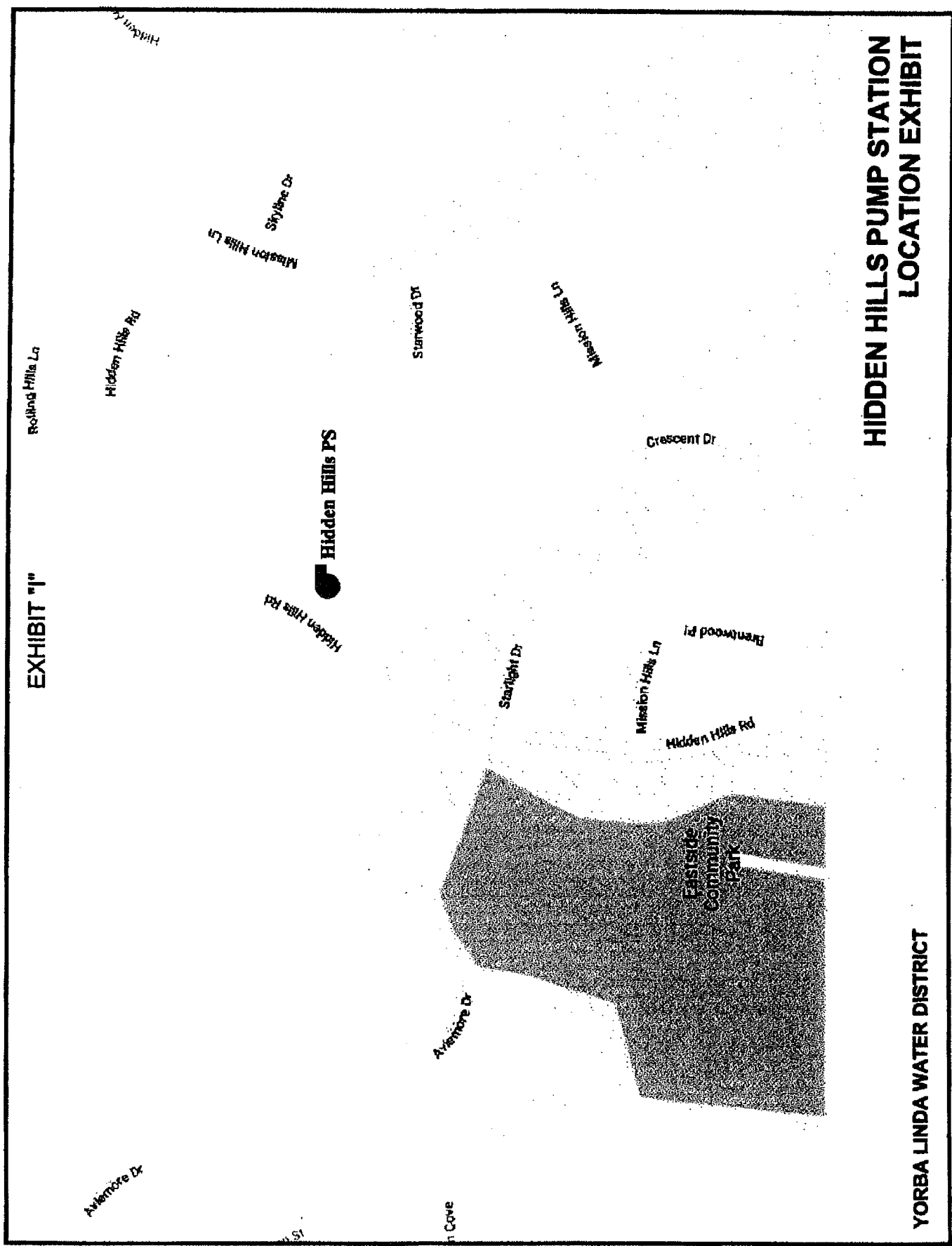


EXHIBIT E



**HIDDEN HILLS PUMP STATION  
LOCATION EXHIBIT**

**YORBA LINDA WATER DISTRICT**

EXHIBIT E

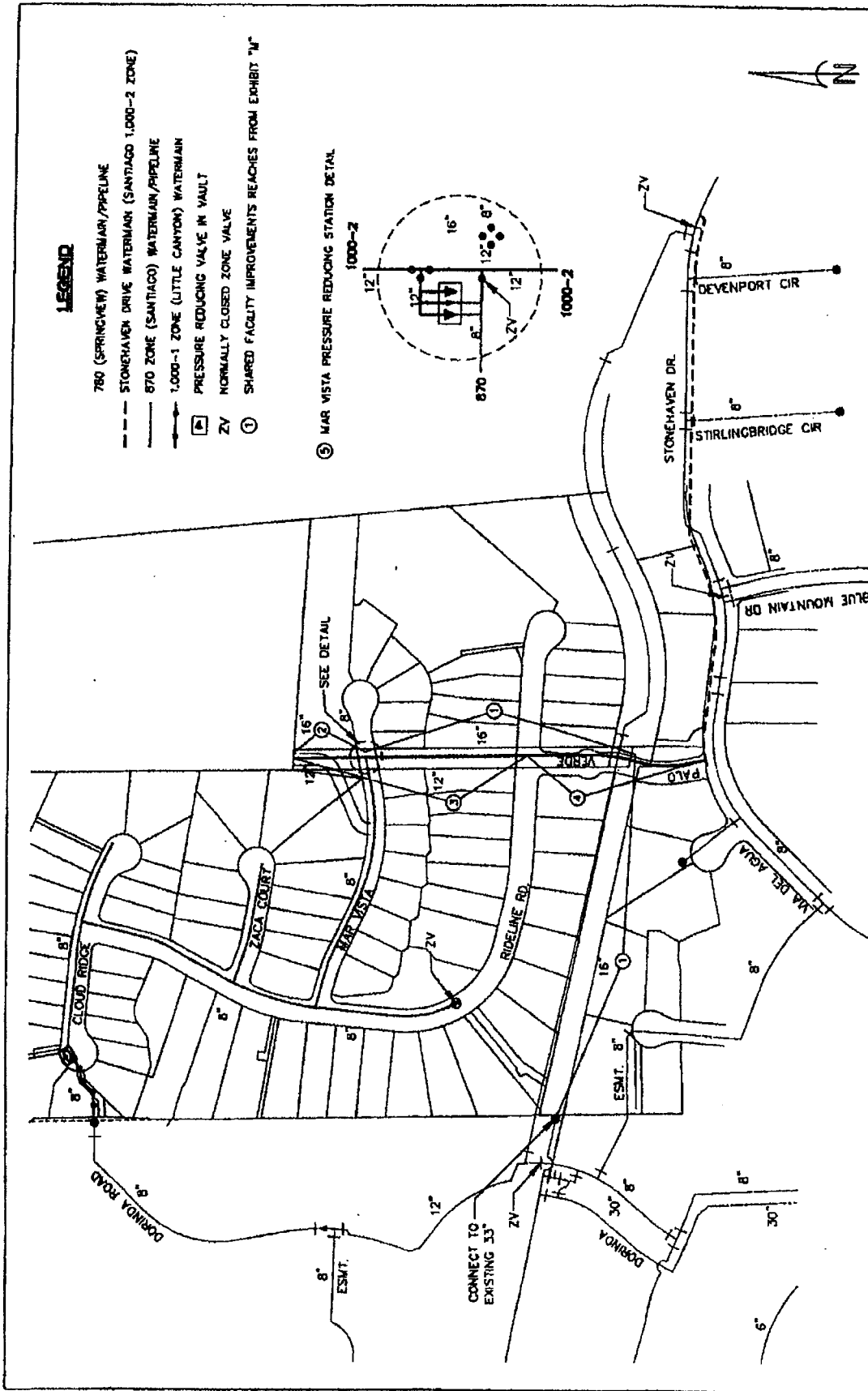


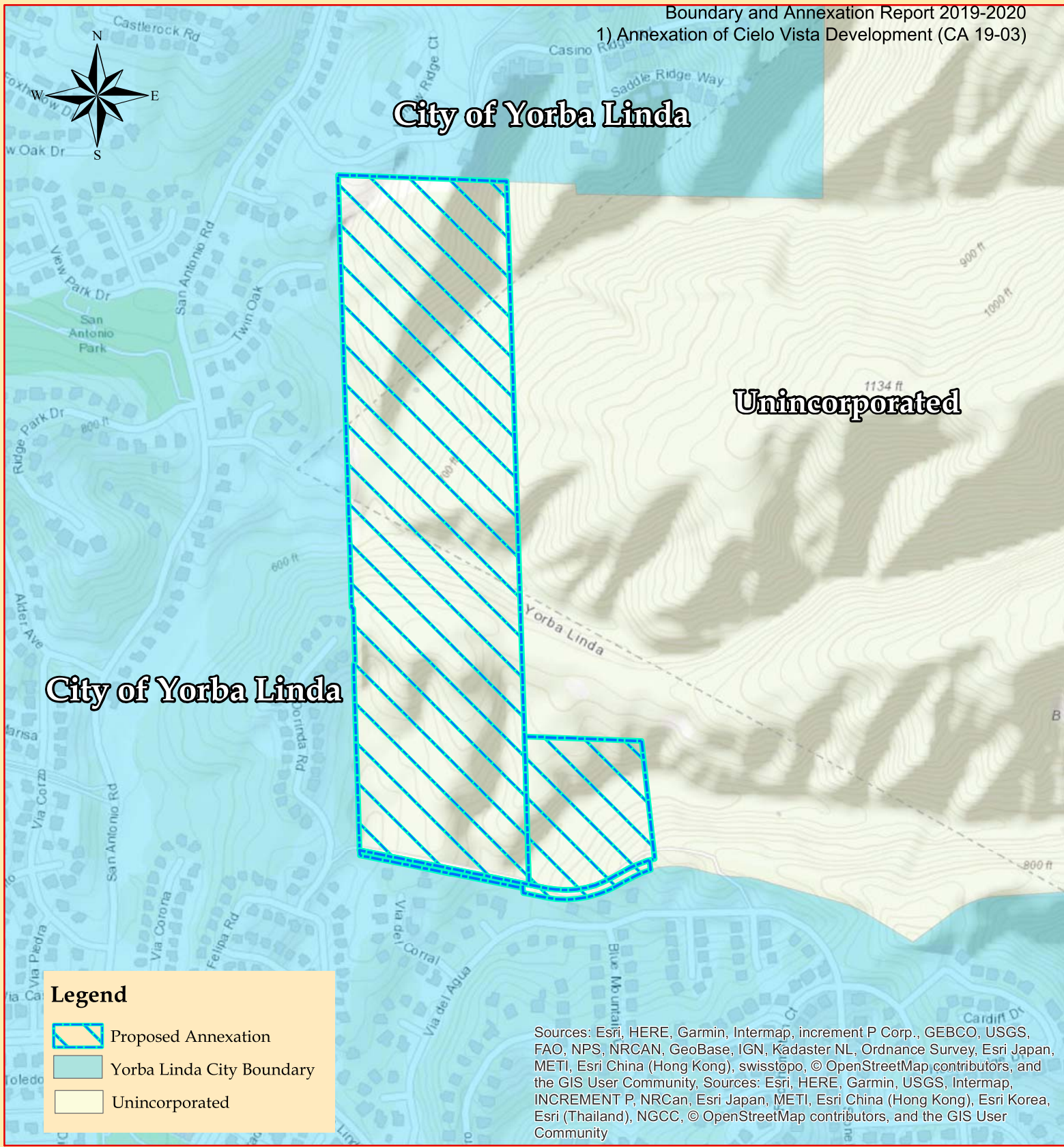
EXHIBIT "N"

"SHARED FACILITY IMPROVEMENTS"  
 (AS DESCRIBED ON EXHIBIT "M")

WILLIAMS & MERRY PATENT  
 1977 L. Williams, Inc.  
 1100 S. Main Street, Los Angeles, CA 90015  
 (213) 758-1000



**P S O M A S**  
 ENGINEERS AND ARCHITECTS  
 1100 S. Main Street, Los Angeles, CA 90015  
 (213) 758-1000


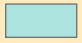
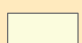


**City of Yorba Linda**

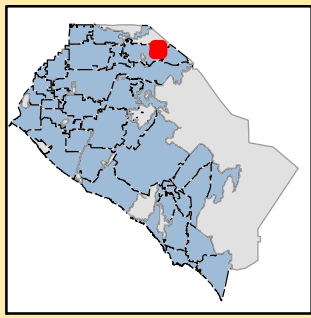
**Unincorporated**

**City of Yorba Linda**

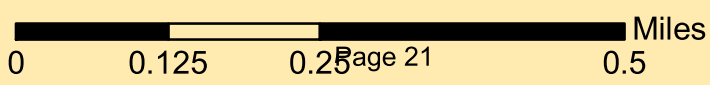
**Legend**

-  Proposed Annexation
-  Yorba Linda City Boundary
-  Unincorporated

Sources: Esri, HERE, Garmin, Intermap, increment P Corp., GEBCO, USGS, FAO, NPS, NRCAN, GeoBase, IGN, Kadaster NL, Ordnance Survey, Esri Japan, METI, Esri China (Hong Kong), swisstopo, © OpenStreetMap contributors, and the GIS User Community, Sources: Esri, HERE, Garmin, USGS, Intermap, INCREMENT P, NRCan, Esri Japan, METI, Esri China (Hong Kong), Esri Korea, Esri (Thailand), NGCC, © OpenStreetMap contributors, and the GIS User Community

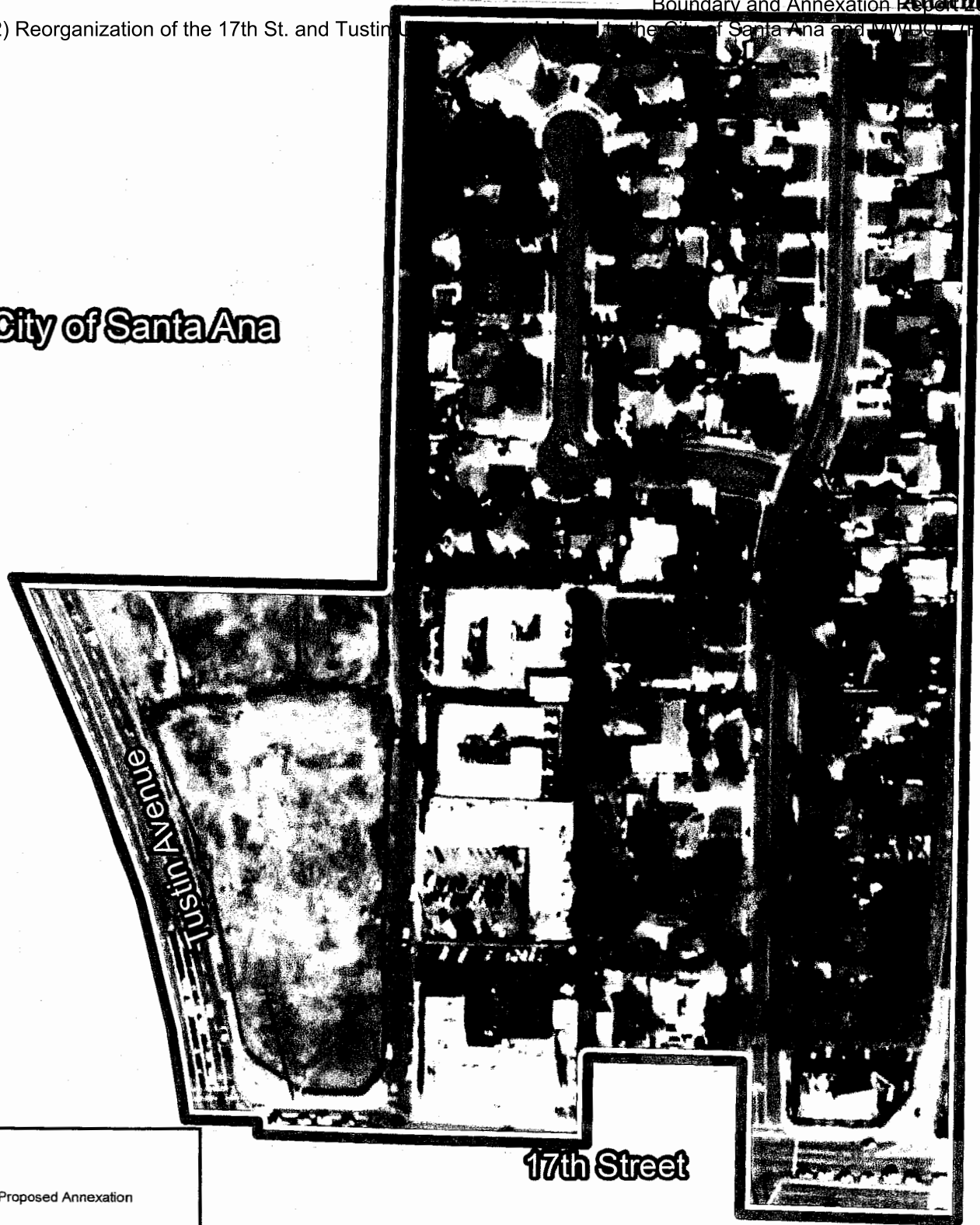


**City of Yorba Linda Annexation of Cielo Vista Development (CA 19-03)**




City of Santa Ana

City of Tustin



Legend

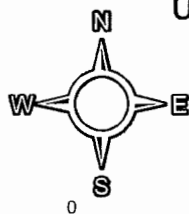
 Proposed Annexation

 SANTA ANA

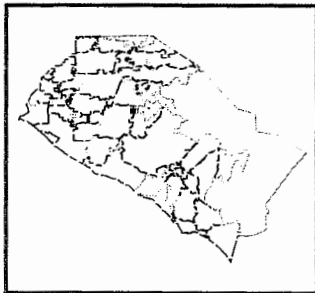
 TUSTIN

Source: Esri, DigitalGlobe, GeoEye, Earthstar Geographics, CNES/Airbus DS, USDA, USGS, AeroGRID, IGN, and the GIS User Community

Reorganization of 17th Street and Tustin Unincorporated Island to the City of Santa Ana and Municipal Water District of Orange County (RO 19-07)



Vicinity Map  
Page 21 0.08 Miles



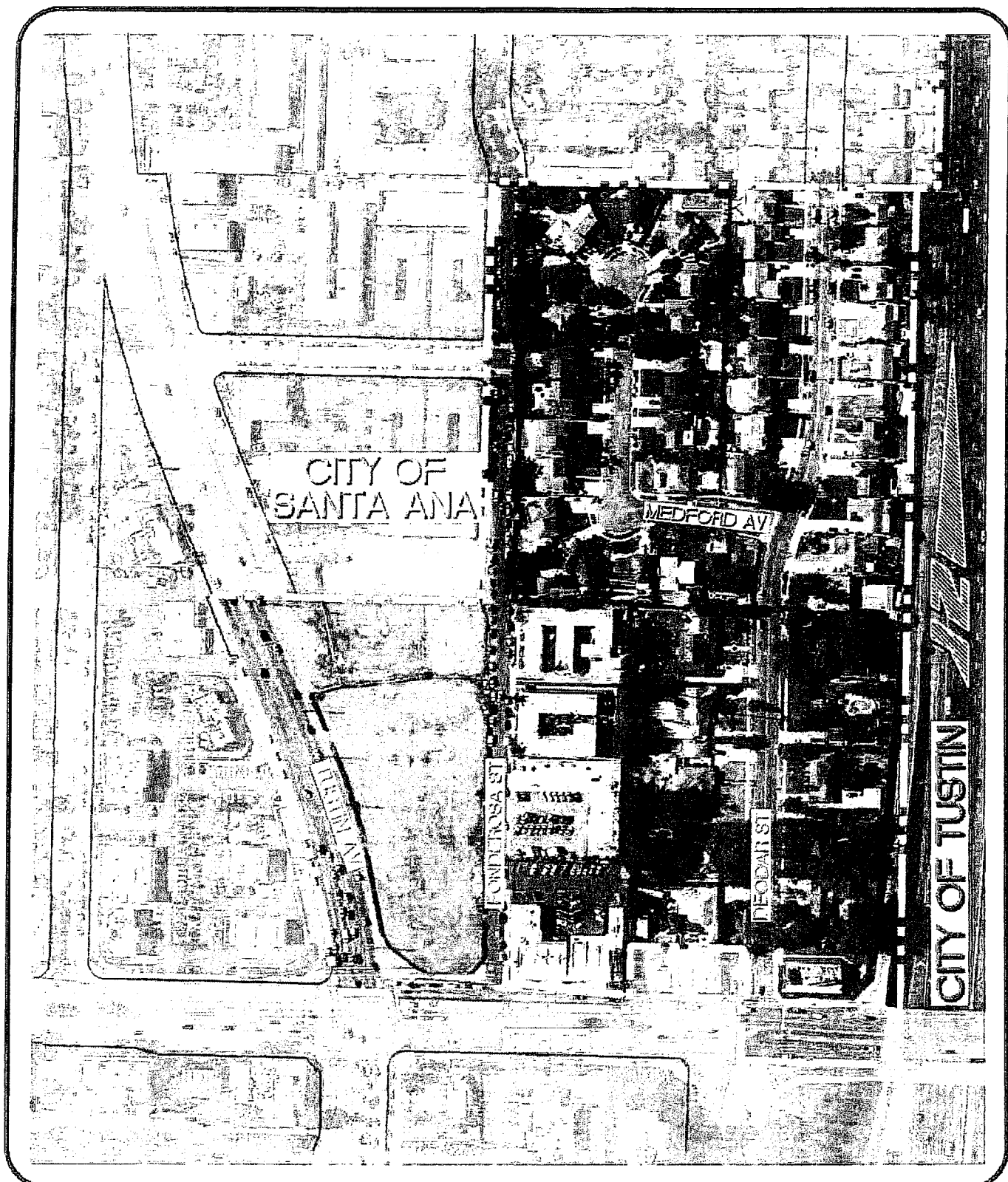
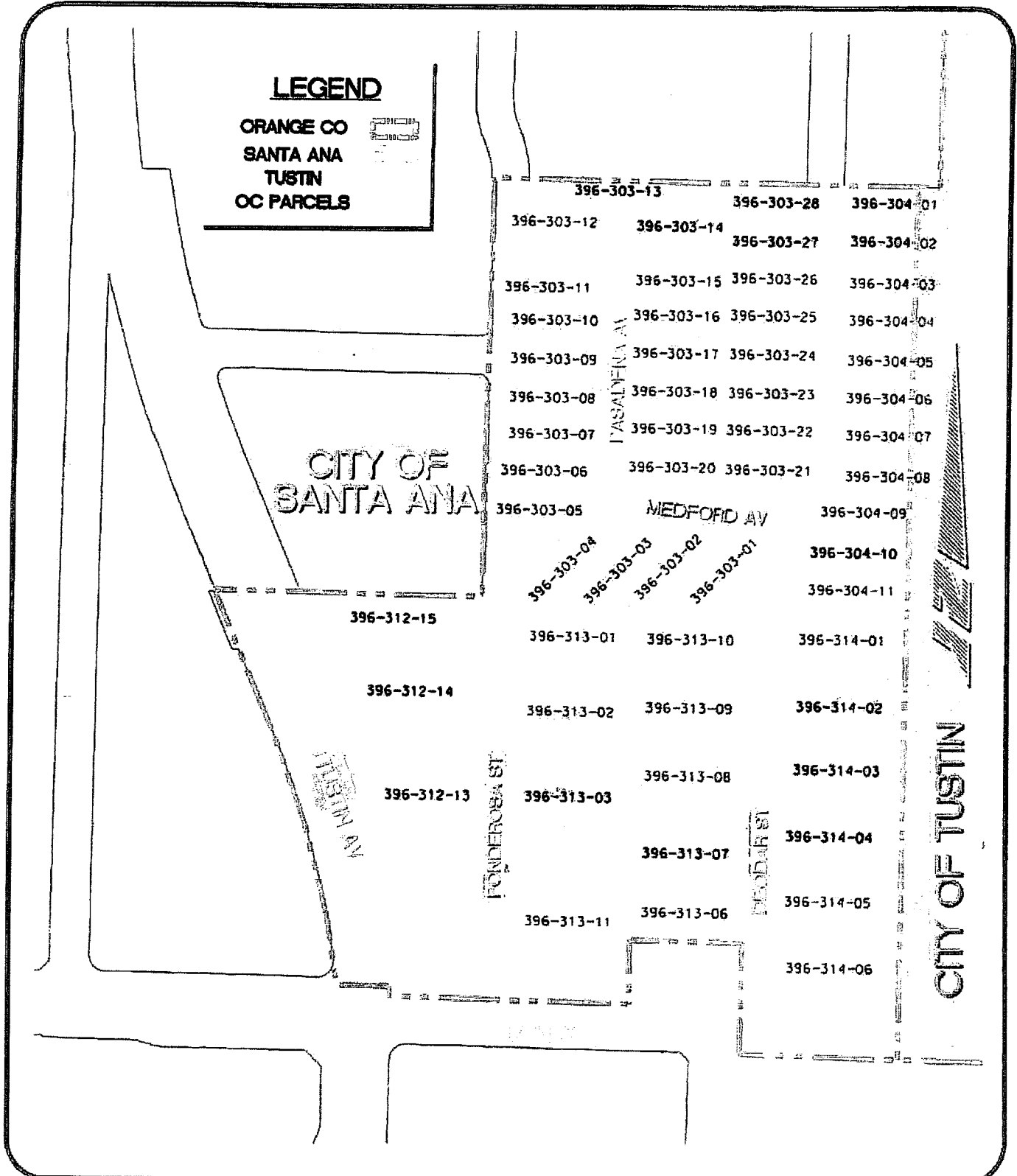


EXHIBIT 2  
CITY OF SANTA ANA 17TH STREET ISLAND - VICINITY MAP

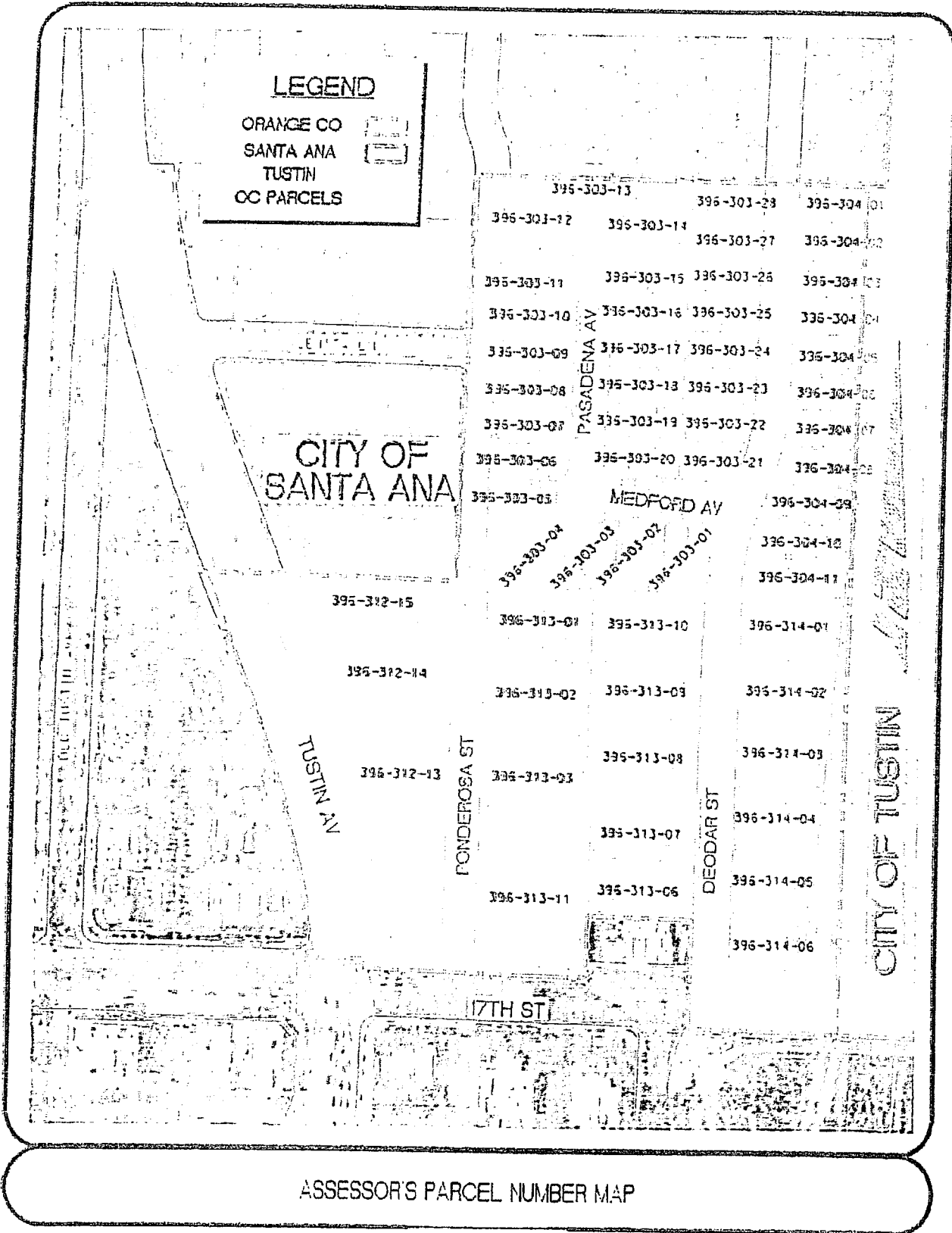
2) Reorganization of the 17th St. and Tustin Unincorporated Island to the City of Santa Ana and MWDOC (RO 19-07)



**EXHIBIT 3**  
**ASSESSOR'S PARCEL NUMBER MAP**



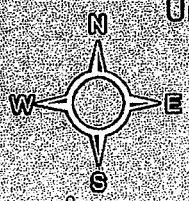
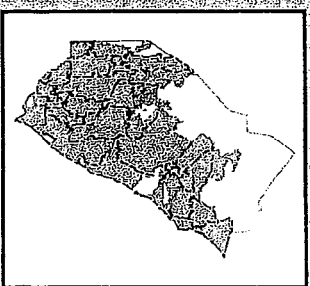
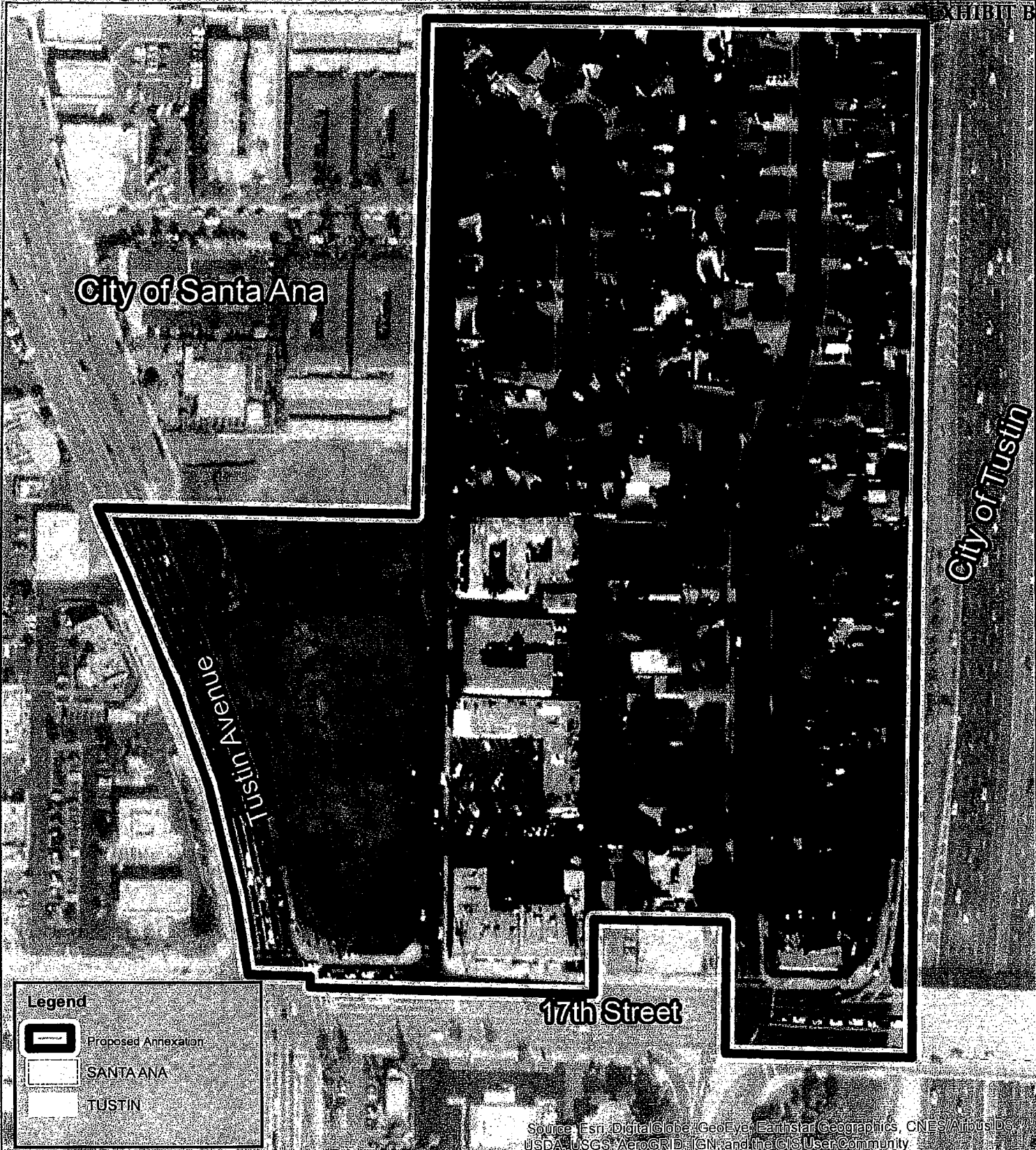
2) Reorganization of the 17th St. and Tustin Unincorporated Island to the City of Santa Ana and MWDOC (RO 19-07)



ASSESSOR'S PARCEL NUMBER MAP

2) Reorganization of the 17th St. and Tustin Unincorporated Island to the City of Santa Ana and MWDOC (RO 19-07)

EXHIBIT B



Reorganization of 17th Street and Tustin  
Unincorporated Island to the City of Santa Ana  
and Municipal Water District of  
Orange County (RO 19-07)

Vicinity Map

Page 25 0.08 Miles



EXHIBIT C

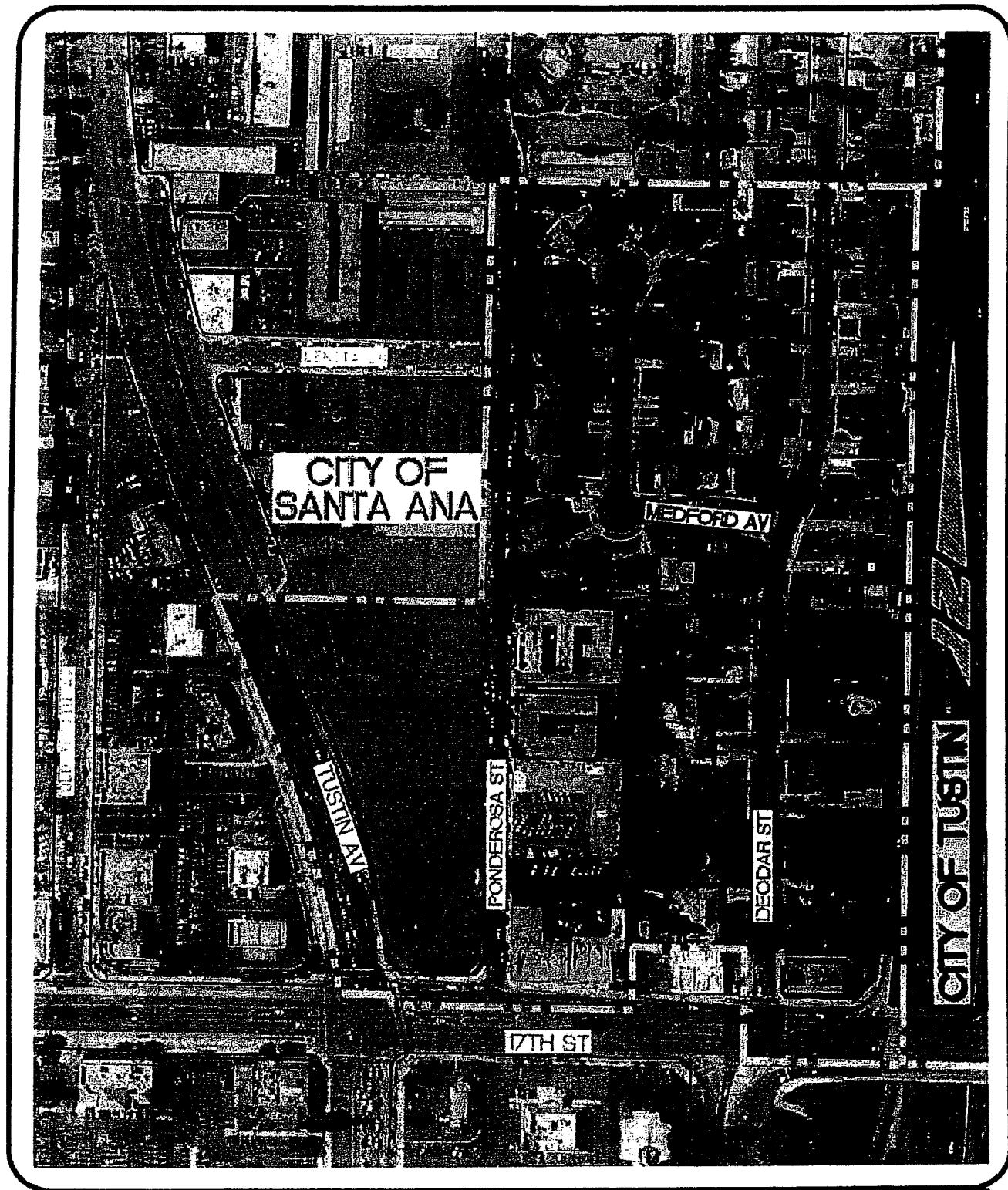


EXHIBIT 2

CITY OF SANTA ANA 17TH STREET ISLAND - VICINITY MAP

EXHIBIT C

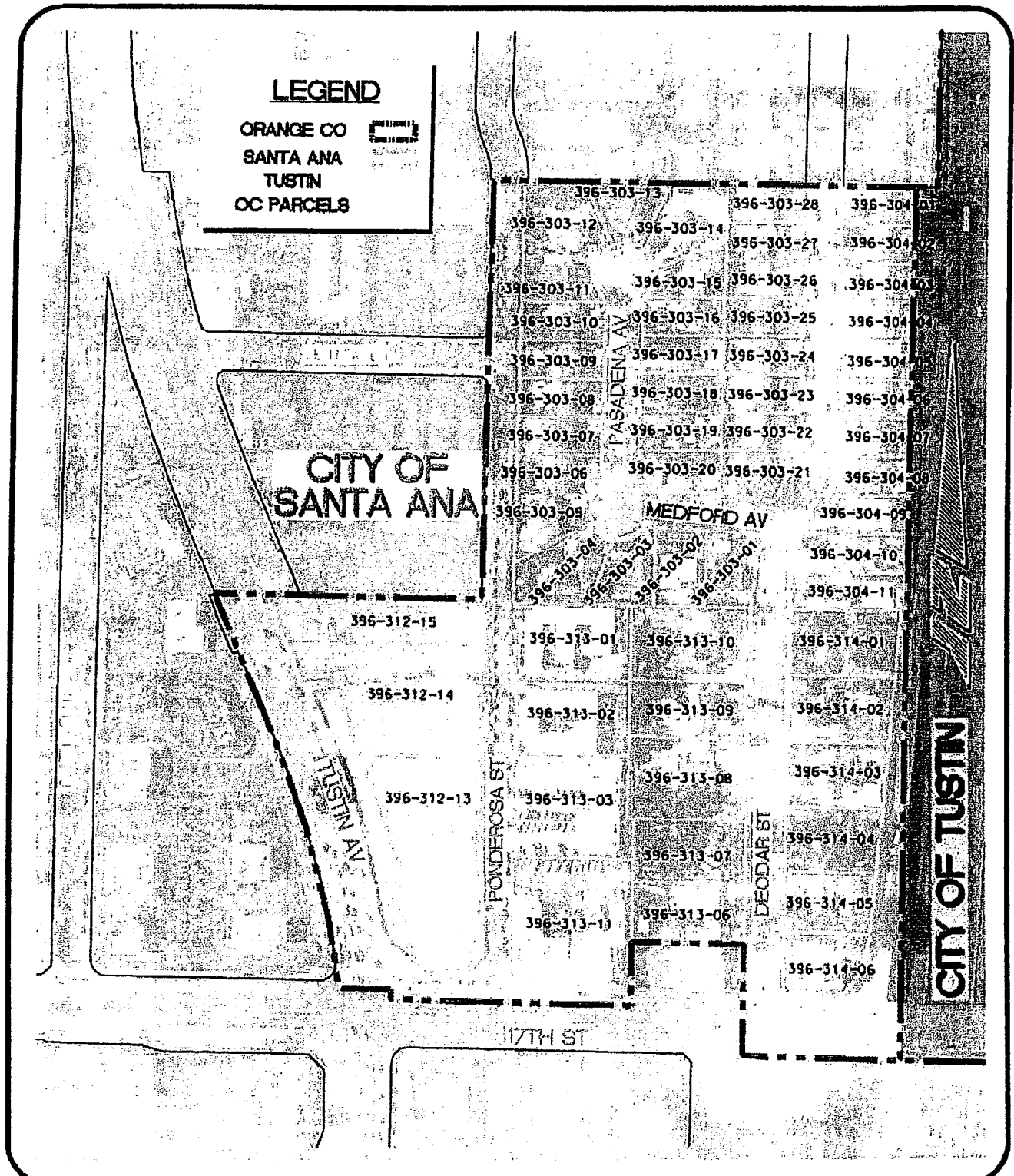


EXHIBIT 3  
ASSESSOR'S PARCEL NUMBER MAP

2) Reorganization of the 17th St. and Tustin Unincorporated Island to the City of Santa Ana and MWDOC (RO 19-07)

“Reorganization of the 17<sup>th</sup> Street and Tustin Unincorporated Island to the City of Santa Ana and Municipal Water District of Orange County (RO 19-07)”

November 13, 2019

Figure 1

**17<sup>th</sup> Street and Tustin Unincorporated Island**

- **Population: 275**
- **Land Use: Residential and Commercial**
- **Acreage: 24.79**



Annexation of the Island would allow the extension of efficient municipal services (i.e., police, planning, water, and wastewater) to the Island. An analysis of municipal service provision within the Island is discussed in the next section of this report. Additionally, State law requires the Commission to review and consider several factors and make determinations for the proposed reorganization. The details of all the factors considered in the review of this proposal are presented in Attachment A.

Municipal Service Provision

The County of Orange is the current service provider of several municipal services to the Island. In accordance with one of its statutory mandates, the Commission is required to establish a Sphere of Influence (SOI) for each Orange County city and special district. SOIs are used to identify probable and physical boundaries and service areas of local government agencies. Additionally, OC LAFCO has established agency SOIs to encourage the efficient, effective and equitable delivery of municipal services to Orange County residents.






**City of Santa Ana**

**City of Tustin**

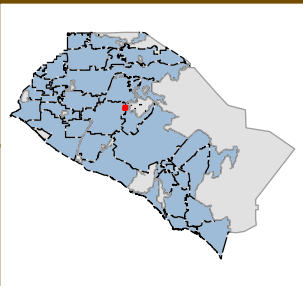
**Tustin Avenue**

**17th Street**

**Legend**

-  Proposed Annexation
-  SANTA ANA
-  TUSTIN

Source: Esri, DigitalGlobe, GeoEye, Earthstar Geographics, CNES/Airbus DS, USDA, USGS, AeroGRID, IGN, and the GIS User Community



**Reorganization of 17th Street and Tustin Unincorporated Island to the City of Santa Ana and Municipal Water District of Orange County (RO 19-07)**

Vicinity Map  
 Page 29 0.08 Miles



2) Reorganization of the 17th St. and Tustin Unincorporated Island to the City of Santa Ana and MWDOC (RO 19-07)



**EXHIBIT 2**  
**CITY OF SANTA ANA 17TH STREET ISLAND - VICINITY MAP**

2) Reorganization of the 17th St. and Tustin Unincorporated Island to the City of Santa Ana and MWDOC (RO 19-07)



**EXHIBIT 3**  
**ASSESSOR'S PARCEL NUMBER MAP**