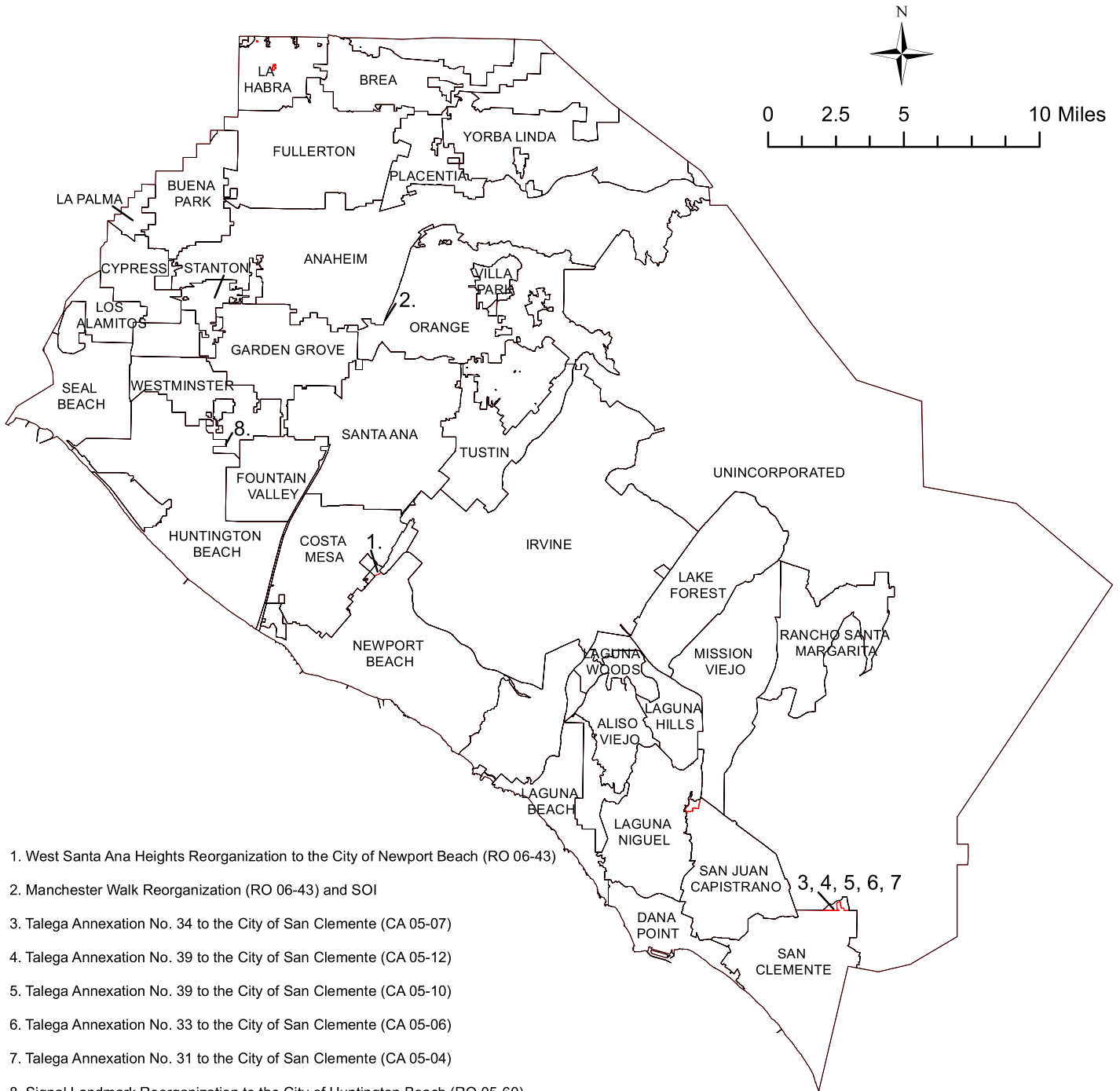


Orange County Boundary and Annexation Report 2007-2008 (January 1)



1. West Santa Ana Heights Reorganization to the City of Newport Beach (RO 06-43)
2. Manchester Walk Reorganization (RO 06-43) and SOI
3. Talega Annexation No. 34 to the City of San Clemente (CA 05-07)
4. Talega Annexation No. 39 to the City of San Clemente (CA 05-12)
5. Talega Annexation No. 39 to the City of San Clemente (CA 05-10)
6. Talega Annexation No. 33 to the City of San Clemente (CA 05-06)
7. Talega Annexation No. 31 to the City of San Clemente (CA 05-04)
8. Signal Landmark Reorganization to the City of Huntington Beach (RO 05-60)

	January 1, 2008 Jurisdictions
	January 1, 2007 Jurisdictions

Source: OC Geomatics, 2007 & 2008
 Note: Coastal boundary represents mean high tide circa 2015. Coastal boundary approximated by CDR GIS staff.

Orange County Boundary and Annexation Report 2007-2008

Jurisdiction	Total Area (Square Miles)*		Area Change 2007-2008**	Annexation Reference #
	January 1, 2007	January 1, 2008		
Aliso Viejo	6.921	6.921	0	
Anaheim	50.872	50.872	-0.000001	2
Brea	12.221	12.221	0	
Buena Park	10.550	10.550	0	
Costa Mesa	15.827	15.827	0	
Cypress	6.622	6.622	0	
Dana Point	6.604	6.604	0	
Fountain Valley	9.048	9.048	0	
Fullerton	22.447	22.447	0	
Garden Grove	17.923	17.923	0	
Huntington Beach	27.370	27.376	0.0055	8
Irvine	65.976	65.976	0	
Laguna Beach	8.919	8.919	0	
Laguna Hills	6.641	6.641	0	
Laguna Niguel	14.787	14.787	0	
Laguna Woods	3.038	3.038	0	
La Habra	7.360	7.360	0	
Lake Forest	16.785	16.785	0	
La Palma	1.804	1.804	0	
Los Alamitos	4.089	4.089	0	
Mission Viejo	17.933	17.933	0	
Newport Beach	25.874	25.984	0.1100	1
Orange	25.783	25.783	0.000001	2
Placentia	6.621	6.621	0	
Rancho Santa Margarita	12.937	12.937	0	
San Clemente	18.127	18.355	0.2278	3,4,5,6,7
San Juan Capistrano	14.177	14.177	0	
Santa Ana	27.352	27.352	0	
Seal Beach	11.991	11.991	0	
Stanton	3.087	3.087	0	
Tustin	11.137	11.137	0	
Villa Park	2.078	2.078	0	
Westminster	10.070	10.070	0	
Yorba Linda	19.867	19.867	0	
Unincorporated	277.080	276.737	-0.3433	1,3,4,5,6,7,8
Orange County	799.920	799.920	0	

Source: O.C. Geomatics, 2007 & 2008

*Area calculated in ArcGIS by CDR.

**Annual area change totals may not match detailed annexation information due to rounding.

Detailed Annexation List:

- 1) West Santa Ana Heights Reorganization to the City of Newport Beach (RO 06-25)
Effective: 9/17/2007
From Unincorporated Orange County to Newport Beach
Inhabited
70.6 acres (0.110 sq. miles)
 - 2) Manchester Walk Reorganization (RO 06-43) and SOI
Effective: 10/4/2007
From Anaheim to Orange
Uninhabited
0.008 acres (0.00000125 sq. miles)
 - 3) Talega Annexation No. 34 to the City of San Clemente (CA 05-07)
Effective: 10/31/2007
From Unincorporated Orange County to San Clemente
Inhabited
6.997 acres (0.0109 sq. miles)
 - 4) Talega Annexation No. 39 to the City of San Clemente (CA 05-12)
Effective: 10/31/2007
From Unincorporated Orange County to San Clemente
Inhabited
96.525 acres (0.150 sq. miles)
 - 5) Talega Annexation No. 37 to the City of San Clemente (CA 05-10)
Effective: 10/31/2007
From Unincorporated Orange County to San Clemente
Inhabited
11.202 acres (0.0175 sq. miles)
- Additional annexations listed on next page.
- Notes:
Benchmark 2015.
Some jurisdictions' legal boundary extends three miles off the coast.
A fixed boundary line at the coast was created in November 2014 based on high-resolution county-wide aerial imagery that was captured on June 19, 2013, to approximate the ocean waterline and to eliminate artificial land area changes to jurisdictions adjacent to the Orange County coast. This coast line does not define any vertical datum such as mean high tide, mean sea level, or mean lower low tide. This reference line was developed through a collaboration of OC Public Works, OC LAFCO, and CDR; it has no legal value; and its purpose is for CDR's use in reporting population density and jurisdictional annexations.
For official legal boundaries, contact the County of Orange Surveyor's office <http://ocpublicworks.com/survey/>

Orange County Boundary and Annexation Report 2007-2008

Detailed Annexation List (Continued):

6) Talega Annexation No. 33 to the City of San Clemente (CA 05-06)

Effective: 10/31/2007

From Unincorporated Orange County to San Clemente

Inhabited

25,484 acres (0.0398 sq. miles)

7) Talega Annexation No. 31 to the City of San Clemente (CA 05-04)

Effective: 10/31/2007

From Unincorporated Orange County to San Clemente

Inhabited

6,165 acres (0.00963 sq. miles)

8) Signal Landmark Reorganization to the City of Huntington Beach (RO 05-60)

Effective: 12/17/2007

From Unincorporated Orange County to Huntington Beach

Uninhabited

3,495 acres (0.00546 sq. miles)

Notes:

Benchmark 2015.

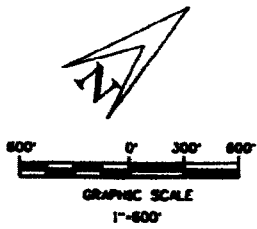
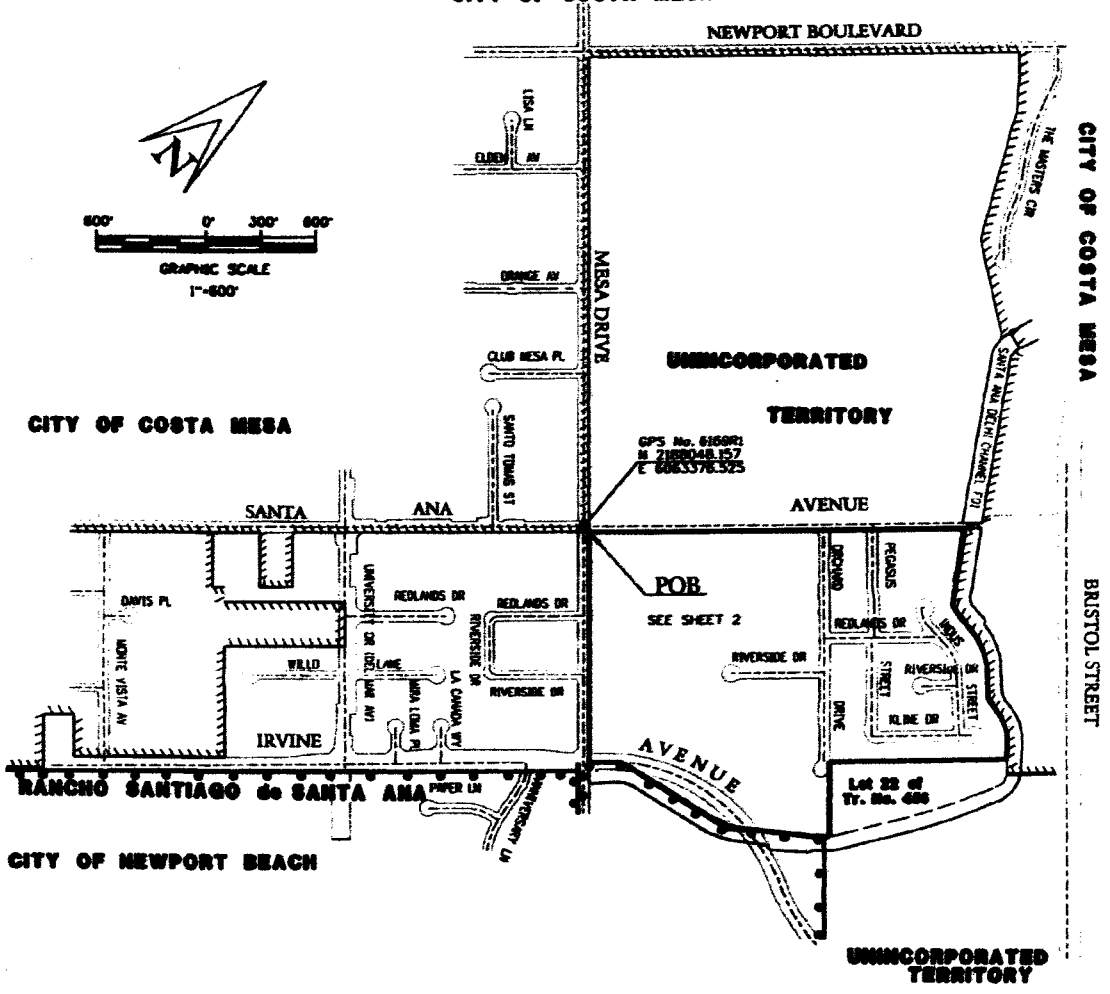
Some jurisdictions' legal boundary extends three miles off the coast.

A fixed boundary line at the coast was created in November 2014 based on high-resolution county-wide aerial imagery that was captured on June 19, 2013, to approximate the ocean waterline and to eliminate artificial land area changes to jurisdictions adjacent to the Orange County coast. This coast line does not define any vertical datum such as mean high tide, mean sea level, or mean lower low tide. This reference line was developed through a collaboration of OC Public Works, OC LAFCO, and CDR; it has no legal jurisdictional annexations. For official legal boundaries, contact the County of Orange Surveyor's office <http://ocpublicworks.com/survey/>

**WEST SANTA ANA HEIGHTS REORGANIZATION
 TO THE CITY OF NEWPORT BEACH
 NO. RO 06-25**

LOCATION MAP

CITY OF COSTA MESA



THIS PROPOSAL WAS PREPARED BY ME OR UNDER MY DIRECTION.

Wanda Bale
 WANDA BALE, L.S. 7695
 MY LICENSE EXPIRES 12/31/08



THIS PARCEL OF LAND CONTAINS
 70.6 ACRES ±.

THIS PROPOSAL DOES MEET THE APPROVAL OF THE
 ORANGE COUNTY SURVEYORS OFFICE
 DATED THIS 9th DAY OF April 2007.

Raymond L. Mathe
 RAYMOND L. MATHE, COUNTY SURVEYOR, L.S. 6185
 MY LICENSE EXPIRES 3/31/08



LEGEND

- ANNEXATION BOUNDARY
- EXISTING CITY OF NEWPORT BEACH BOUNDARY
- EXISTING CITY OF COSTA MESA BOUNDARY
- ORANGE COUNTY SURVEY HORIZONTAL CONTROL STATION

UNLESS OTHERWISE NOTED, ALL BEARINGS AND DISTANCES ON THIS MAP ARE GROUND AND ARE BASED UPON THE CALIFORNIA COORDINATE SYSTEM (CCS83), ZONE VI, 1983 MAD (1991.35 EPOCH DCS GPS ADJUSTMENT).

EXHIBIT "A"

WEST SANTA ANA HEIGHTS REORGANIZATION TO THE CITY OF NEWPORT BEACH NO. RO 06-25

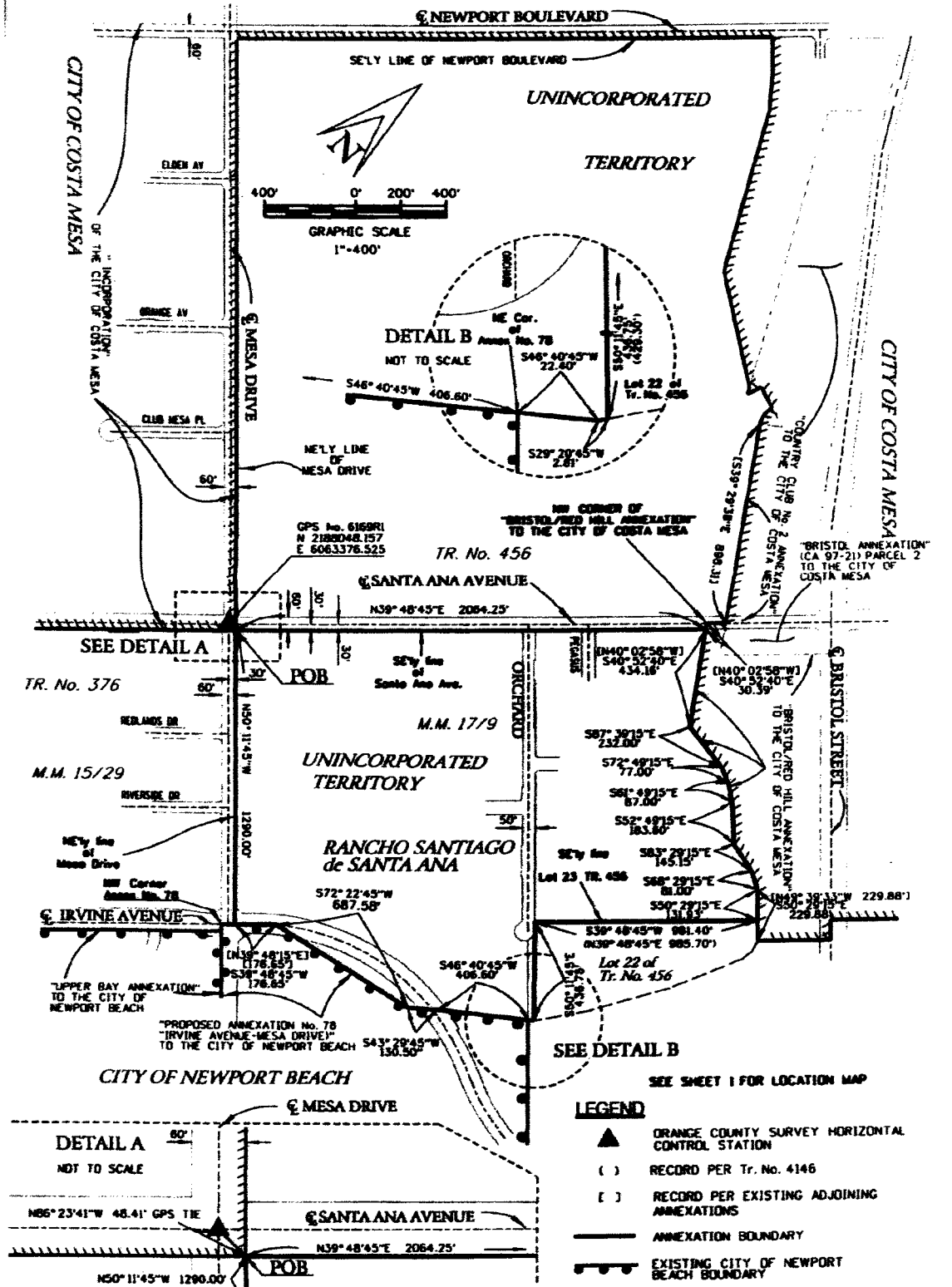
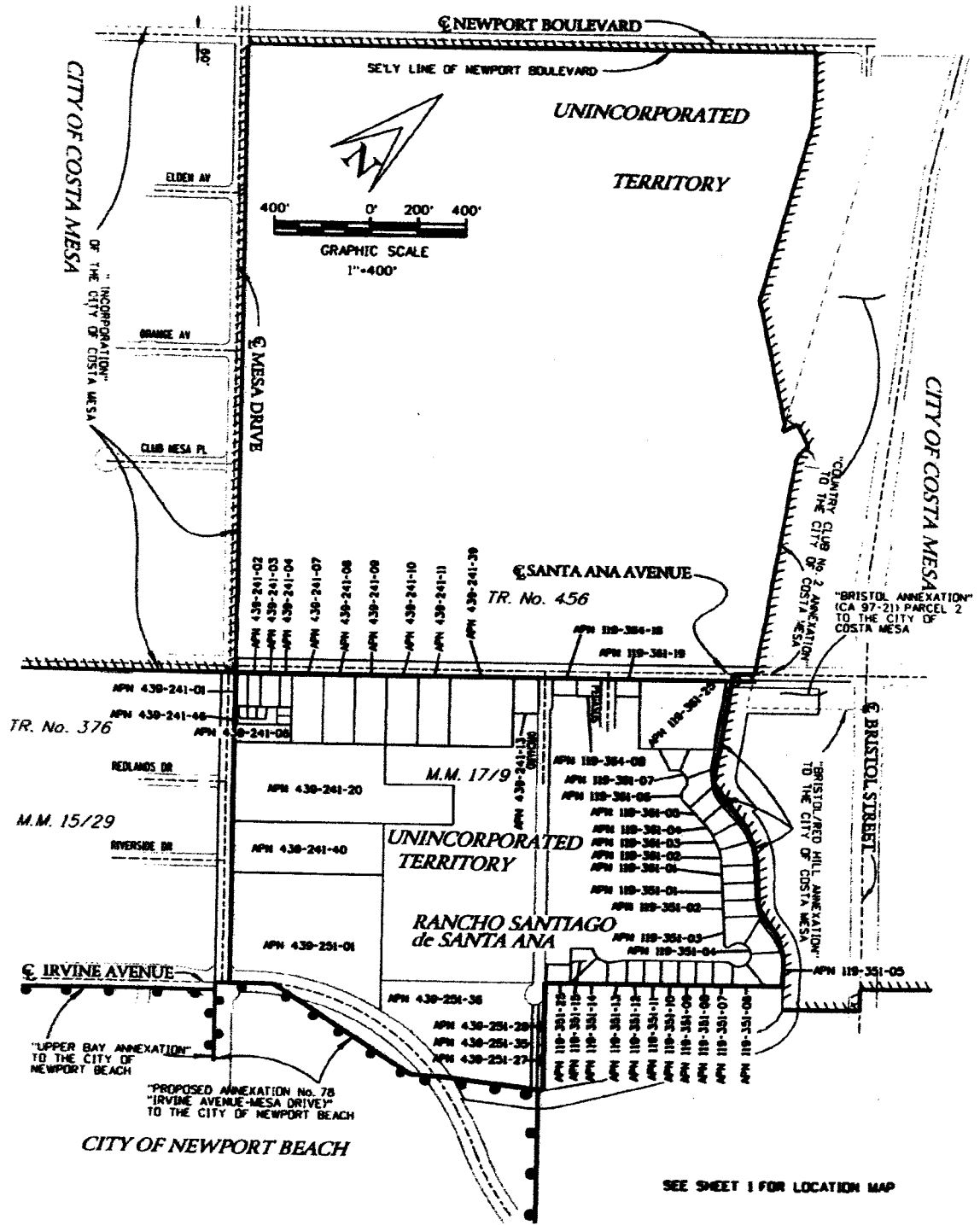
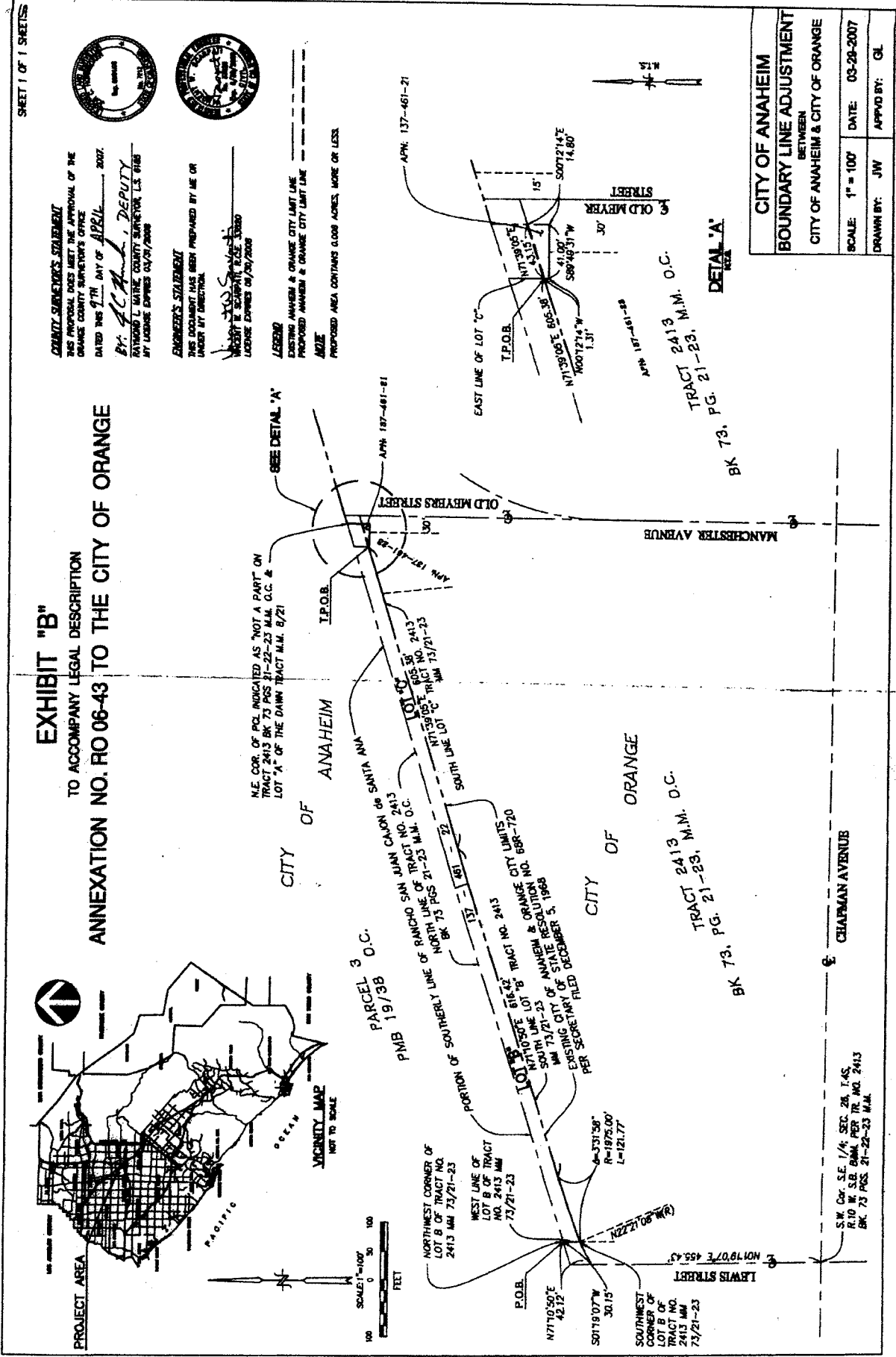


EXHIBIT "P" WEST SANTA ANA HEIGHTS REORGANIZATION TO THE CITY OF NEWPORT BEACH NO. RO 06-25



SEE SHEET 1 FOR LOCATION MAP

- LEGEND**
- APN ASSESSORS PARCEL MAP NUMBER
 - ANNEXATION BOUNDARY
 - EXISTING CITY OF NEWPORT BEACH BOUNDARY



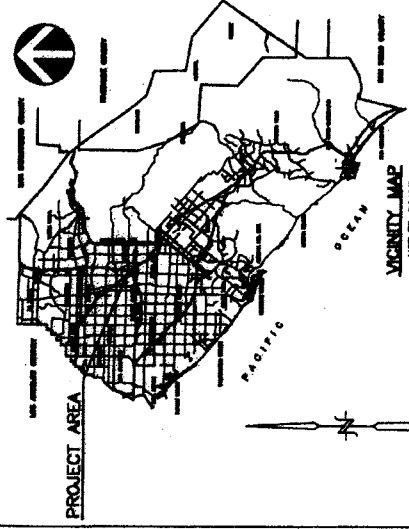
COUNTY SURVEYOR'S STATEMENT
 THIS PROPOSAL MEETS THE APPROVAL OF THE
 ORANGE COUNTY SURVEYOR'S OFFICE
 DATED THIS 9TH DAY OF APRIL 2007.
 BY: *[Signature]* DEPUTY
 RAYMOND L. WATKINS, COUNTY SURVEYOR, U.S. 6138
 MY LICENSE EXPIRES 03/31/2008

ENGINEER'S STATEMENT
 THIS DOCUMENT HAS BEEN PREPARED BY ME OR
 UNDER MY DIRECTORIAL
 CONTROL AND I AM A LICENSED PROFESSIONAL
 ENGINEER IN THE STATE OF CALIFORNIA
 LICENSE EXPIRES 03/31/2008

LEGEND
 EXISTING ANAHEIM & ORANGE CITY LIMIT LINE
 PROPOSED ANAHEIM & ORANGE CITY LIMIT LINE
 AREA
 PROPOSED AREA CONTAINS 0.008 ACRES, MORE OR LESS

SHEET 1 OF 1 SHEETS

CITY OF ANAHEIM	
BOUNDARY LINE ADJUSTMENT	
BETWEEN	
CITY OF ANAHEIM & CITY OF ORANGE	
SCALE: 1" = 100'	DATE: 03-29-2007
DRAWN BY: JW	APPROVED BY: GL



LEGEND

EXISTING CITY OF SAN CLEMENTE BOUNDARY
 PER ANNEXATION NO. 11, ORDINANCE NO. 414,
 APRIL 19, 1963

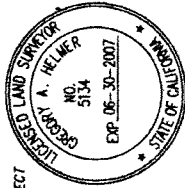
ANNEXATION BOUNDARY.

NOTE

THIS ANNEXATION CONTAINS 6,987 ACRES.
 UNLESS OTHERWISE NOTED, ALL DISTANCES ON THIS MAP ARE GROUND
 MEASUREMENTS. TO OBTAIN THE GRID DISTANCE BASED ON THE
 CALIFORNIA COORDINATE SYSTEM, (CGS83) ZONE 17 AND 1983
 (1981.35 EPOCH O.C.S. GPS ADJUSTMENT), MULTIPLY GROUND
 DISTANCE BY 0.99994960.

APR 2007-04-07

PREPARED BY ME OR UNDER MY DIRECT
 SUPERVISION



Gregory A. Helmer
 GREGORY A. HELMER, L.S. 5134

THIS PROPOSAL DOES MEET THE APPROVAL OF THE
 ORANGE COUNTY SURVEYOR'S OFFICE.

DATED THIS 4TH DAY OF MARCH, 2005

FRANCISCO L. MAYHE, COUNTY SURVEYOR
 L.S. 6185, EXPIRATION DATE MARCH 31, 2006

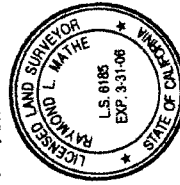


EXHIBIT 'B'

CA05-07
 TALEGA ANNEXATION NO. 34
 TO THE CITY OF SAN CLEMENTE

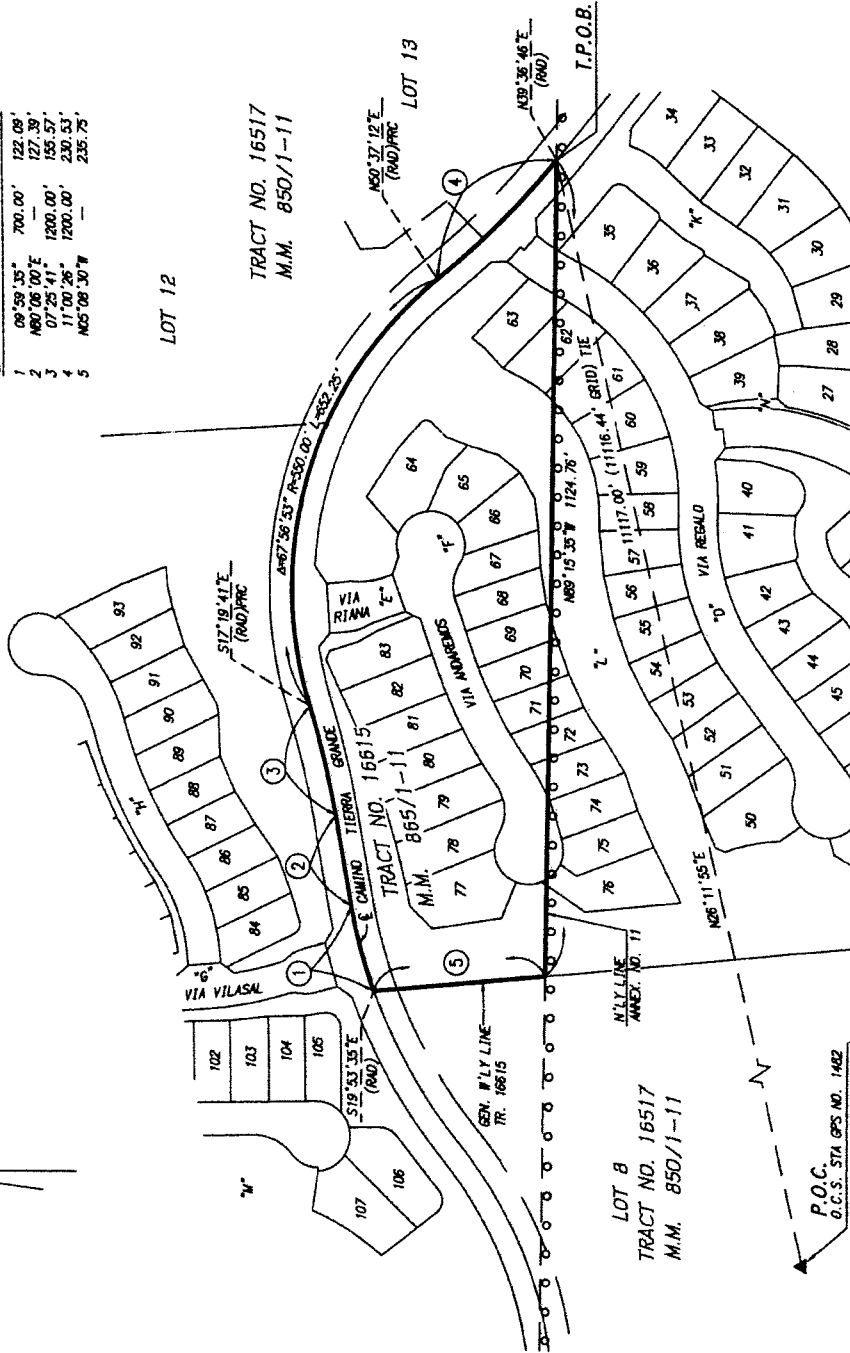
SHEET 1 OF 1 SHEET



J.N. 10-10298

DATA TABLE

NO.	Bearing/Delta	RADIUS	LENGTH
1	09°59'35" E	700.00'	122.09'
2	180°00'00" E	---	127.39'
3	07°25'41" E	1200.00'	155.57'
4	11°00'26" E	1200.00'	230.53'
5	N65°06'30" W	---	235.75'



LEGEND
 ——— EXISTING CITY OF SAN CLEMENTE BOUNDARY
 ——— ANNEXATION BOUNDARY
 () INDICATES RECORD DATA PER ANNEXATION NO. 11

NOTE
 THIS ANNEXATION CONTAINS 96.525 ACRES.
 UNLESS OTHERWISE NOTED, ALL DISTANCES ON THIS MAP ARE GROUND MEASUREMENTS. TO OBTAIN THE GRID DISTANCE BASED ON THE CALIFORNIA COORDINATE SYSTEM, (CCSR3) ZONE VI AND 1983 (1991.35 EPOCH O.G.C.S. GPS ADJUSTMENT), MULTIPLY GROUND DISTANCE BY 0.99994660.
 APN FOR 708-041-15 AND 708-041-13
 PREPARED BY ME OR UNDER MY DIRECT SUPERVISION
 KURT R. TROTT, L.S. 7854



THIS PROPOSAL DOES MEET THE APPROVAL OF THE ORANGE COUNTY SURVEYOR'S OFFICE.
 DATED THIS 31 DAY OF February, 2006
 RAYMOND L. MATHE, COUNTY SURVEYOR
 L.S. 6185, EXPIRATION DATE MARCH 31, 2006



SCALE: 1"=400'

NO	Bearing/Delta	RADIUS	LENGTH
1	N23°12'18"E	—	56.69'
2	N12°11'30"W	—	153.21'
3	N21°31'44"E	—	26.42'
4	N23°52'34"W	—	249.95'
5	N38°22'03"W	—	41.92'
6	N28°54'38"W	—	585.66'
7	N65°41'28"W	—	101.10'
8	S86°57'24"W	—	118.44'
9	S37°51'36"W	—	384.14'
10	S14°30'52"E	—	300.14'
11	N67°47'04"W	—	505.82'
12	S29°36'20"W	—	317.81'
13	S03°57'44"W	—	203.10'
14	N83°57'12"W	—	293.57'
15	S51°59'26"W	—	188.11'
16	S38°29'42"W	—	194.67'
17	N39°31'36"E	—	47.96'
18	N18°16'47"E	—	291.73'
19	N66°44'08"E	—	61.38'
20	S77°37'24"E	—	520.70'
21	N60°23'59"E	—	475.08'
22	N27°18'29"E	—	178.89'
23	S86°02'29"E	—	445.70'
24	N66°14'04"E	—	388.33'
25	N28°10'59"E	—	282.86'
26	N09°20'15"W	—	228.53'
27	08°40'00"	1850.00'	475.88'
28	S16°30'03"E	2050.00'	554.58'
29	15°30'00"	—	317.28'
30	S01°00'03"E	—	—
31	—	—	—

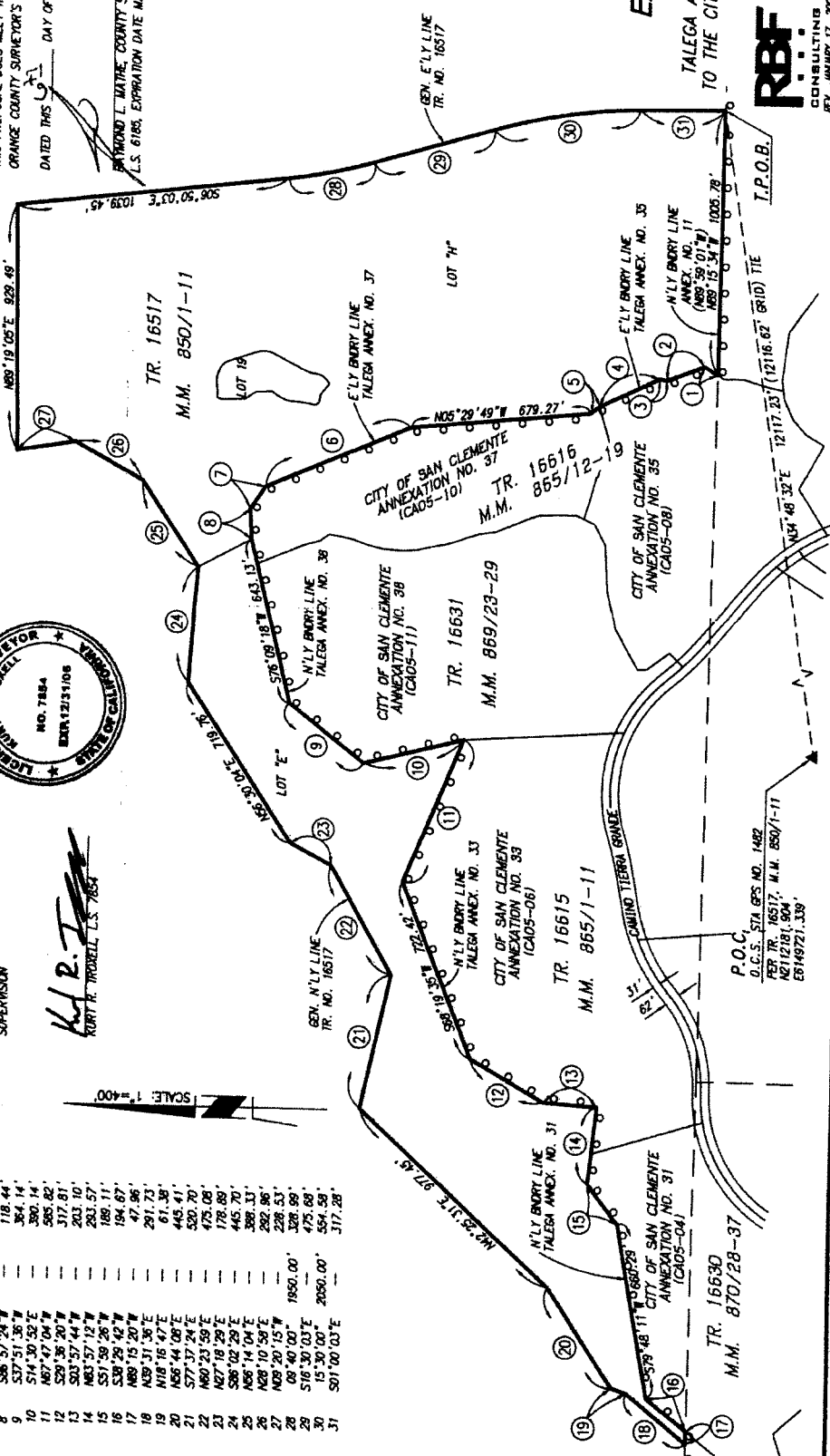


EXHIBIT 'B'
 CA05-12
 TALEGA ANNEXATION NO. 39
 TO THE CITY OF SAN CLEMENTE

PLANNING & DESIGN & CONSTRUCTION
RBF
 CONSULTING
 REV. JANUARY 17, 2006
 AUGUST 22, 2006

SHEET 1 OF 1 SHEET

LEGEND

EXISTING CITY OF SAN CLEMENTE BOUNDARY
 PER ANNEXATION NO. 35 CA05-08

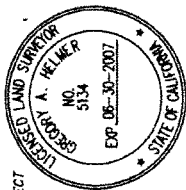
ANNEXATION BOUNDARY

NOTE

THIS ANNEXATION CONTAINS 11,202 ACRES.
 UNLESS OTHERWISE NOTED, ALL DISTANCES ON THIS MAP ARE GROUND
 MEASUREMENTS. TO OBTAIN THE GRID DISTANCE BASED ON THE
 CALIFORNIA COORDINATE SYSTEM, (CGS83) ZONE VI AND 1983
 (1997.35 EPOCH D.C.S. EPS ADJUSTMENT), MULTIPLY GROUND
 DISTANCE BY 0.99994980.

APN FOR: 700-041-10

PREPARED BY ME OR UNDER MY DIRECT
 SUPERVISION



Gregory A. Helmer
 GREGORY A. HELMER, L.S. 5134

THIS PROPOSAL DOES MEET THE APPROVAL OF THE
 ORANGE COUNTY SURVEYOR'S OFFICE.

DATED THIS 3rd DAY OF MAY, 2005

RANDOLPH L. MATHE, COUNTY SURVEYOR
 L.S. 6185, EXPIRATION DATE MARCH 31, 2006

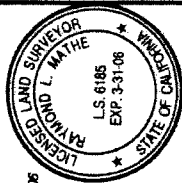
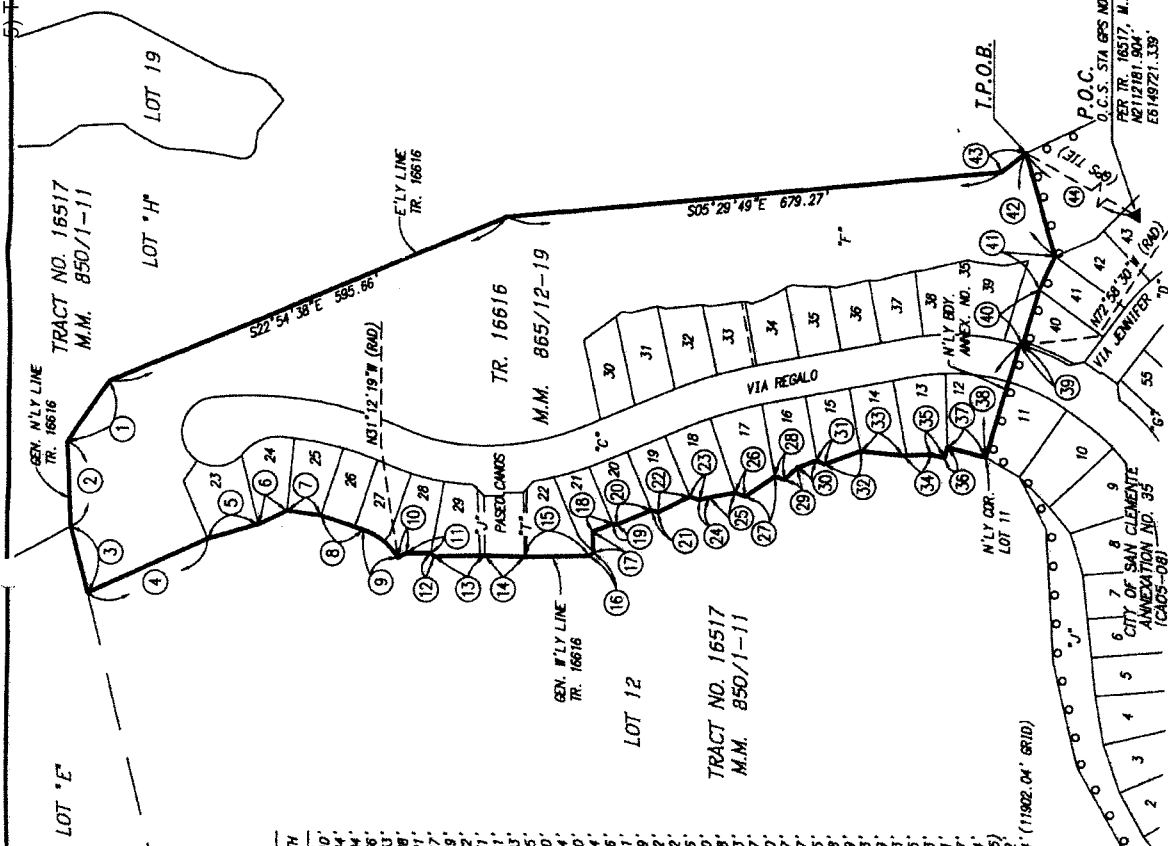


EXHIBIT 'B'

CA05-10
 TALEGA ANNEXATION NO. 37
 TO THE CITY OF SAN CLEMENTE

SHEET 1 OF 1 SHEET



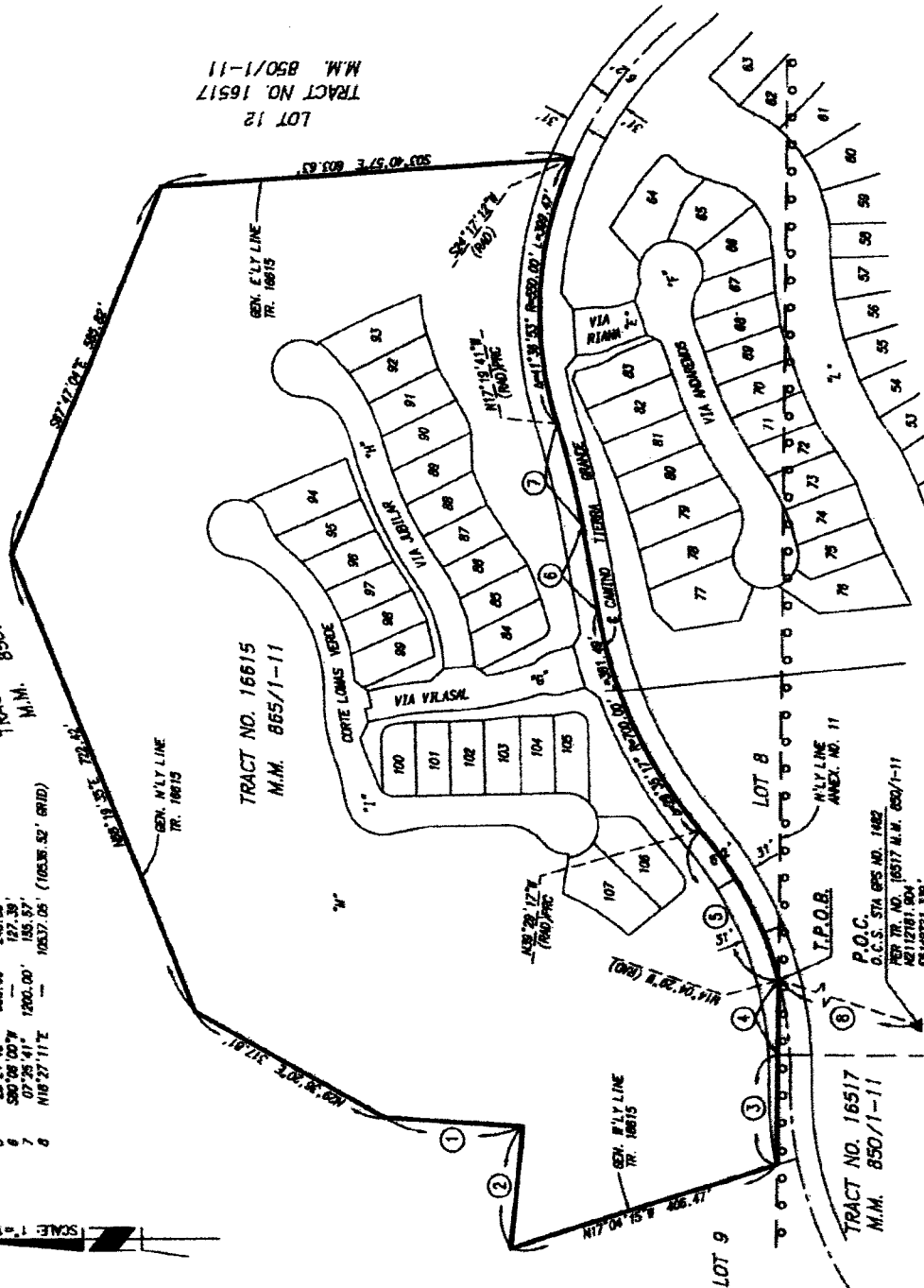
DATA TABLE

NO.	Bearing/Delta	RADIUS	LENGTH
1	S55°41'28"E	---	101.10'
2	N66°57'24"E	---	118.44'
3	N76°09'18"E	---	94.94'
4	N25°07'57"W	---	181.66'
5	N16°33'59"W	---	72.33'
6	N26°52'39"W	---	44.28'
7	N08°01'23"E	---	47.21'
8	N18°22'31"E	---	62.47'
9	40°25'10"	90.00'	63.49'
10	N29°54'23"W	---	12.82'
11	N01°19'00"E	---	34.71'
12	N43°41'00"E	---	6.51'
13	N01°06'56"E	---	70.03'
14	N01°19'00"E	---	54.05'
15	N01°19'00"W	---	89.00'
16	N43°31'13"W	---	7.14'
17	S97°18'39"W	---	28.50'
18	N22°49'00"W	---	29.94'
19	N14°14'15"E	---	5.26'
20	N23°56'46"W	---	52.01'
21	N16°24'48"E	---	9.29'
22	N26°49'24"W	---	49.12'
23	N21°16'07"E	---	13.92'
24	N10°24'14"W	---	14.26'
25	N21°34'37"E	---	35.90'
26	N04°52'27"E	---	14.98'
27	N17°38'37"E	---	49.73'
28	N44°08'54"W	---	14.00'
29	N20°03'04"W	---	28.97'
30	N25°46'53"E	---	11.67'
31	N20°13'59"W	---	52.75'
32	N25°29'46"E	---	56.78'
33	N07°04'42"E	---	38.89'
34	N17°04'42"E	---	18.23'
35	N14°45'42"E	---	15.39'
36	N14°45'42"E	---	53.43'
37	N03°37'43"W	---	161.65'
38	00°39'13"	---	3.73'
39	N73°20'34"W	---	80.01'
40	N65°24'03"W	---	51.07'
41	S73°58'09"W	---	146.84'
42	PER TALES ANNEX. NO. 35	---	41.92'
43	S38°22'03"E	---	11902.64' (11902.04' GRID)
44	N29°04'03"E	---	41.92'

H:\VPOATA\10103698\CA05\MAPPING\EXHIBITS\698X008.DWG KT 5/2/05 9:04 am

DATA TABLE

ID	IRMS/Delta	RADIUS	LENGTH
1	N03°57'44"E	203.10'	
2	S03°53'12"E	178.41'	
3	N08°15'20"W	160.41'	
4	N08°15'33"W	108.06'	
5	S25°24'48"	360.00'	
6	S90°28'00"W	248.39'	
7	07°25'41"	1260.00'	
8	N18°27'11"E	155.57'	



LEGEND

EXISTING CITY OF SAN CLEMENTE BOUNDARY
 PER ANNEXATION NO. 11, ORDINANCE NO. 414,
 APRIL 18, 1983

ANNEXATION BOUNDARY

NOTE

THIS ANNEXATION CONTAINS 25.484 ACRES.
 UNLESS OTHERWISE NOTED, ALL DISTANCES ON THIS MAP ARE GROUND
 MEASUREMENTS TO OBTAIN THE GRID DISTANCE BASED ON THE
 CALIFORNIA COORDINATE SYSTEM, (CGS83) ZONE VI, NAD 1983
 (1997.35 EPOCH U.S.C.S. EPS ADJUSTMENT), ALL TYPICAL GROUND
 DISTANCE BY 0.99994960.

APN FOR: 708-041-08
 PREPARED BY ME OR UNDER MY DIRECT
 SUPERVISION



GREGORY A. HELMER, L.S. 5134

THIS PROPOSAL DOES MEET THE APPROVAL OF THE
 CHANGE COUNTY SURVEYOR'S OFFICE

DATED THIS 25th DAY OF May, 2005

PREPARED BY THE COUNTY SURVEYOR
 STAFF'S EXPIRATION DATE MARCH 31, 2008



EXHIBIT 'B'

CA05-06
 TALEGA ANNEXATION NO. 33
 TO THE CITY OF SAN CLEMENTE

SHEET 1 OF 1 SHEET



CONSULTING ENGINEERS, INC.
 15151 S. RAYBURN
 SUITE 201, SAN JOSE, CA 95131

JUN. 10-10-2008

LEGEND

— EXISTING CITY OF SAN CLEMENTE BOUNDARY
 PER ANNEXATION NO. 11, ORDINANCE NO. 414,
 APRIL 19, 1963
 — ANNEXATION BOUNDARY

NOTE

THIS ANNEXATION CONTAINS 6, 165 ADRESA.
 UNLESS OTHERWISE NOTED, ALL DISTANCES ON THIS MAP ARE GROUND
 MEASUREMENTS. TO OBTAIN THE GRID DISTANCE BASED ON THE
 CALIFORNIA COORDINATE SYSTEM, (CCS83) ZONE VI AND 1983
 (1981.35 EPOCH O.C.S. GPS ADJUSTMENT), MULTIPLY GROUND
 DISTANCE BY 0.99994960.

APR 708-041-01

PREPARED BY ME OR UNDER MY DIRECT
 SUPERVISION



Gregory A. Helmer
 GREGORY A. HELMER, L.S. 5134

THIS PROPOSAL DOES MEET THE APPROVAL OF THE
 ORANGE COUNTY SURVEYOR'S OFFICE

DATED THIS 15TH DAY OF February, 2005

RAYMOND L. MATHE, COUNTY SURVEYOR
 L.S. 6186
 EXP. 3-31-06



EXHIBIT 'B'
 CA05-04

TALEGA ANNEXATION NO. 31
 TO THE CITY OF SAN CLEMENTE

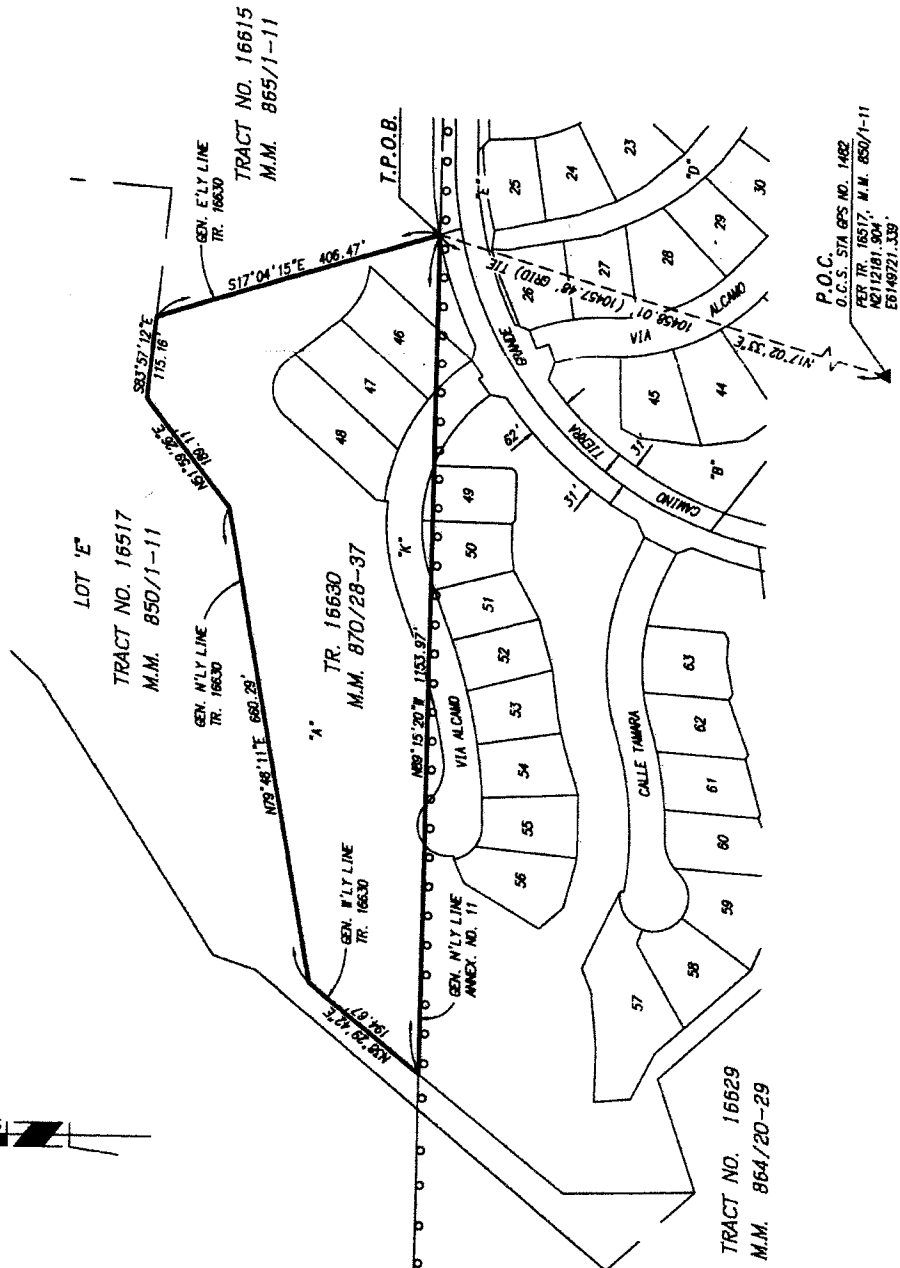
SHEET 1 OF 1 SHEET
 PLANNING & DESIGN & CONSTRUCTION



RBE CONSULTING
 INC.
 1675 OCTOBER 11, 2005
 MARCH 30, 2005

J.M. 10-10-0896

SCALE: 1"=160'

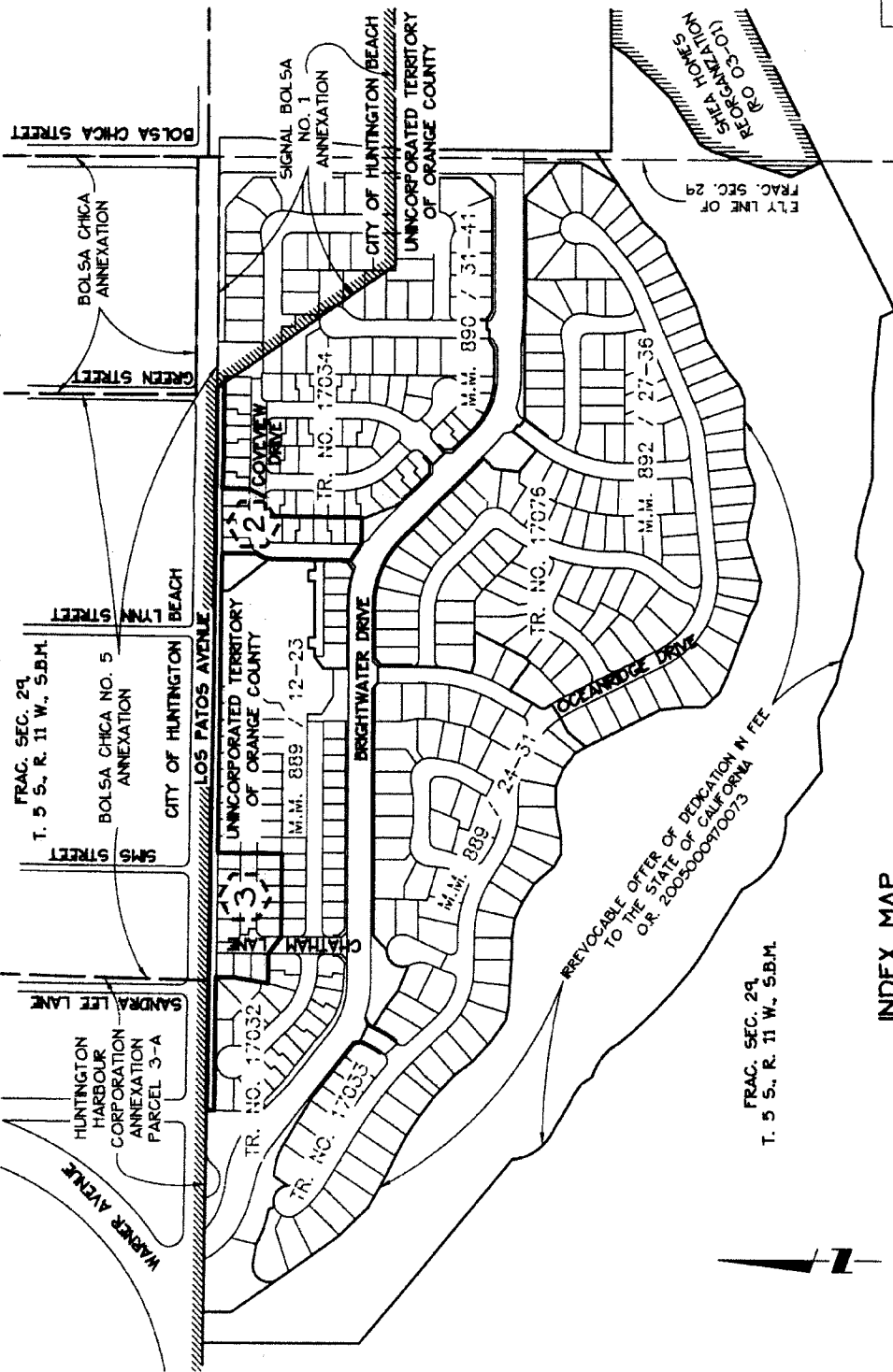


P.O.C.
 O.C.S. STA GPS NO. 1462
 PER TR. 16517, M.M. 850/1-11
 82112181.504'
 81749721.339'

SHEET 1 OF 3 SHEETS

EXHIBIT "B"

ANNEXATION NO. RO 05-60 TO THE CITY OF HUNTINGTON BEACH (BRIGHTWATER - PHASE 1)



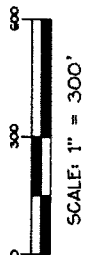
FRAC. SEC. 29
T. 5 S., R. 11 W., S.B.M.

INDEX MAP

(2) INDICATES SHEET NO.

NOTES

THIS ANNEXATION CONTAINS 3.495 ACRES +/-.
101-016-14 - ASSESSORS PARCEL NUMBER (TYPICAL)



\\projects\20423414\01_SURMAP\DWG\SYMC0892.dwg 10/11/2007 7:28:18 AM P07

SURVEYOR'S STATEMENT

THIS DOCUMENT WAS PREPARED BY ME OR UNDER MY DIRECTION.

DATED THIS 11th DAY OF October, 2007.

James O. Steves

JAMES O. STEVES, P.L.S., 6086
REGISTRATION EXPIRES 12/31/07



COUNTY SURVEYOR'S STATEMENT

THIS PROPOSAL DOES MEET THE APPROVAL OF THE ORANGE COUNTY SURVEYOR'S OFFICE.

DATED THIS 22nd DAY OF October, 2007.

BY: *Raymond L. Mathe* DEPUTY

RAYMOND L. MATHE, L.S. 6185
EXPIRATION DATE 3/31/08
COUNTY SURVEYOR



LEGEND

BOUNDARY OF ANNEXATION NO. RO 05-60
(BRIGHTWATER - PHASE 1)

EXISTING CITY OF HUNTINGTON BEACH BOUNDARY



STANTEC CONSULTING INC.
19 TECHNOLOGY DRIVE
IRVINE, CA 92618
949.923.6000

stantec.com

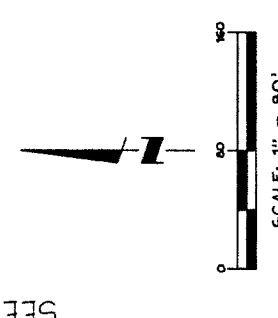
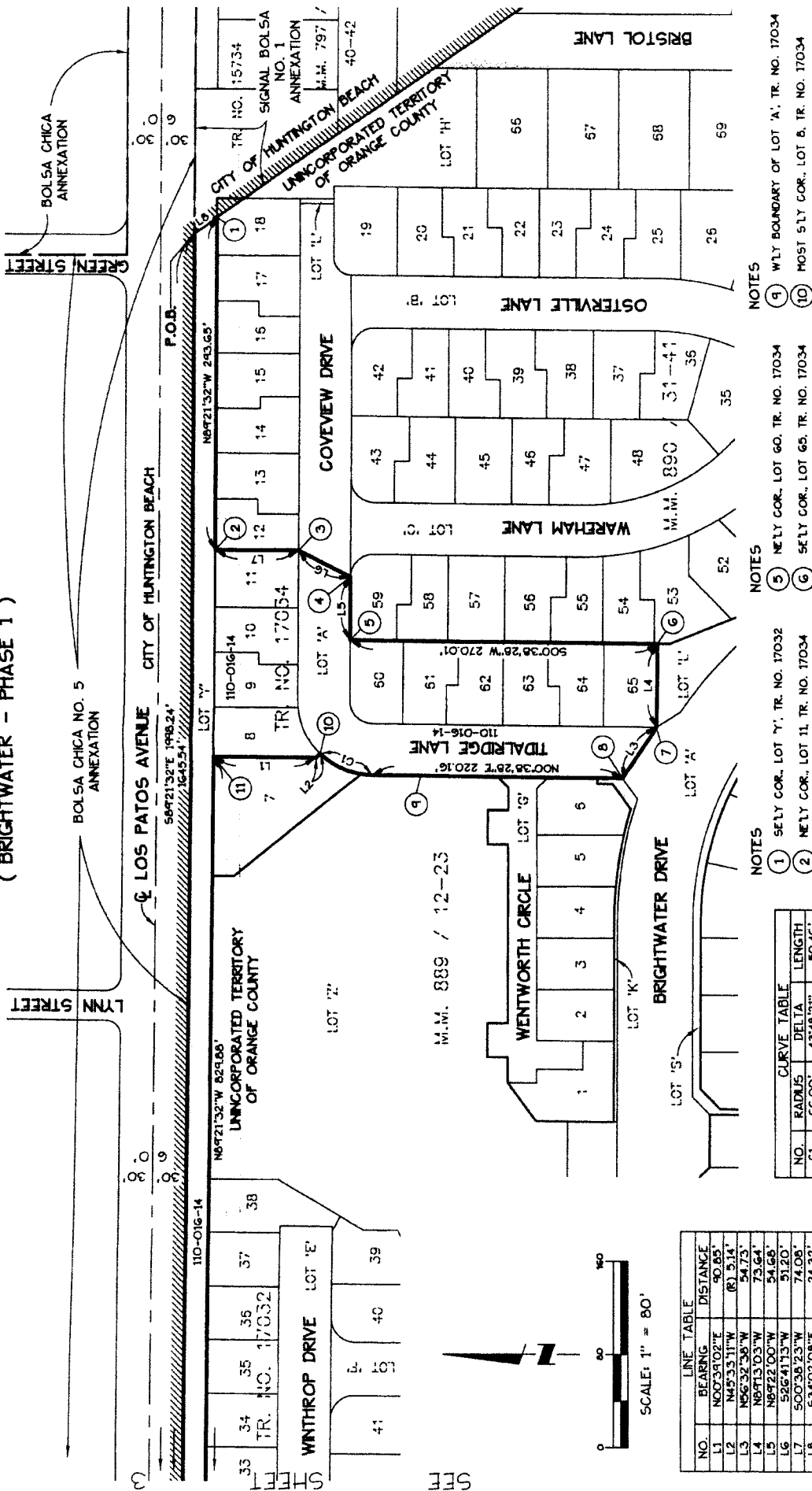
J.N. 2042 341410 DATE: 10/11/07

8) Signal Landmark Reorganization to the City of Huntington Beach (RO 05-60) FOR INDEX MAP AND LEGEND. SEE SHEET 1.

SHEET 2 OF 3 SHEETS

EXHIBIT "B"

ANNEXATION NO. RO 05-GO TO THE CITY OF HUNTINGTON BEACH (BRIGHTWATER - PHASE 1)



NO.	BEARING	DISTANCE
L1	N00°39'02"E	80.85'
L2	N45°33'11"W	87.514'
L3	N56°32'38"W	94.73'
L4	N87°15'03"W	75.64'
L5	N89°22'00"W	54.66'
L6	S00°36'23"W	74.08'
L8	S34°02'06"E	24.32'

NO.	RADIUS	DELTA	LENGTH
C1	66.00'	43°48'21"	50.46'

- NOTES
- ① SE'LY COR. LOT 'Y', TR. NO. 17032
 - ② NE'LY COR. LOT 11, TR. NO. 17034
 - ③ SE'LY COR. LOT 11, TR. NO. 17034
 - ④ NW'LY COR. LOT 'C', TR. NO. 17034

- NOTES
- ⑤ NE'LY COR. LOT 60, TR. NO. 17034
 - ⑥ SE'LY COR. LOT 65, TR. NO. 17034
 - ⑦ SE'LY COR. LOT 'A', TR. NO. 17034
 - ⑧ SW'LY COR. LOT 'A', TR. NO. 17034

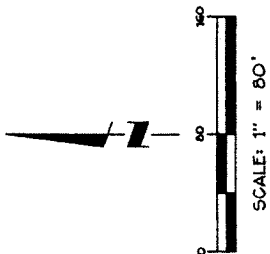
- NOTES
- ⑨ W'LY BOUNDARY OF LOT 'A', TR. NO. 17034
 - ⑩ MOST 51'LY COR. LOT 6, TR. NO. 17034
 - ⑪ NW'LY COR. LOT 6, TR. NO. 17034

87 Signal Landmark Reorganization to the City of Huntington Beach (RO 05-60)
FOR INDEX MAP AND LEGEND,
SEE SHEET 1.

EXHIBIT "B"

ANNEXATION NO. RO 05-60 TO THE CITY OF HUNTINGTON BEACH (BRIGHTWATER - PHASE 1)

SHEET 3 OF 3 SHEETS



NOTES

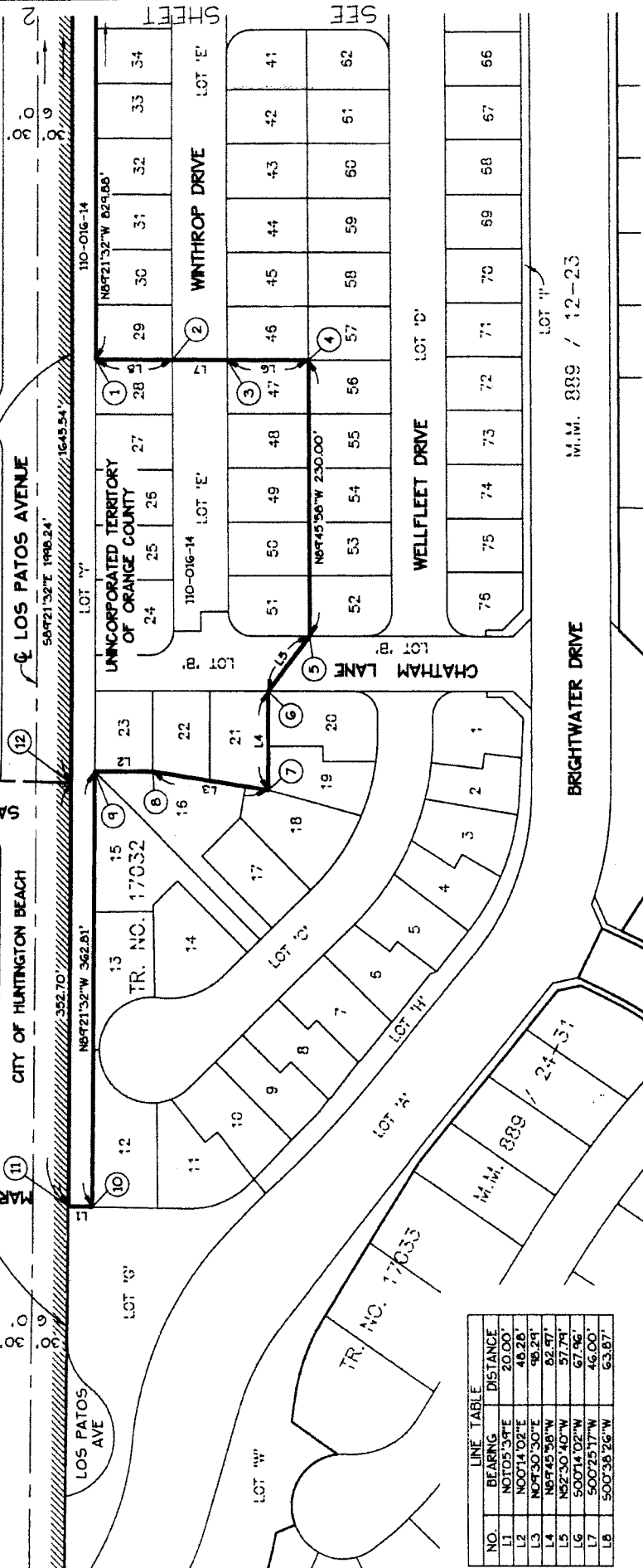
- ① NE 1/4 COR., LOT 2A, TR. NO. 17032
- ② SE 1/4 COR., LOT 2B, TR. NO. 17032
- ③ NE 1/4 COR., LOT 47, TR. NO. 17032
- ④ SE 1/4 COR., LOT 47, TR. NO. 17032
- ⑤ SW 1/4 COR., LOT 51, TR. NO. 17032
- ⑥ SE 1/4 COR., LOT 21, TR. NO. 17032
- ⑦ SW 1/4 COR., LOT 21, TR. NO. 17032
- ⑧ SW 1/4 COR., LOT 23, TR. NO. 17032
- ⑨ NW 1/4 COR., LOT 23, TR. NO. 17032
- ⑩ SW 1/4 COR., LOT 'Y', TR. NO. 17032
- ⑪ NW 1/4 COR., LOT 'Y', TR. NO. 17032
- ⑫ SW 1/4 COR. "BOLSA CHICA NO. 5 ANNEXATION"

NOTES

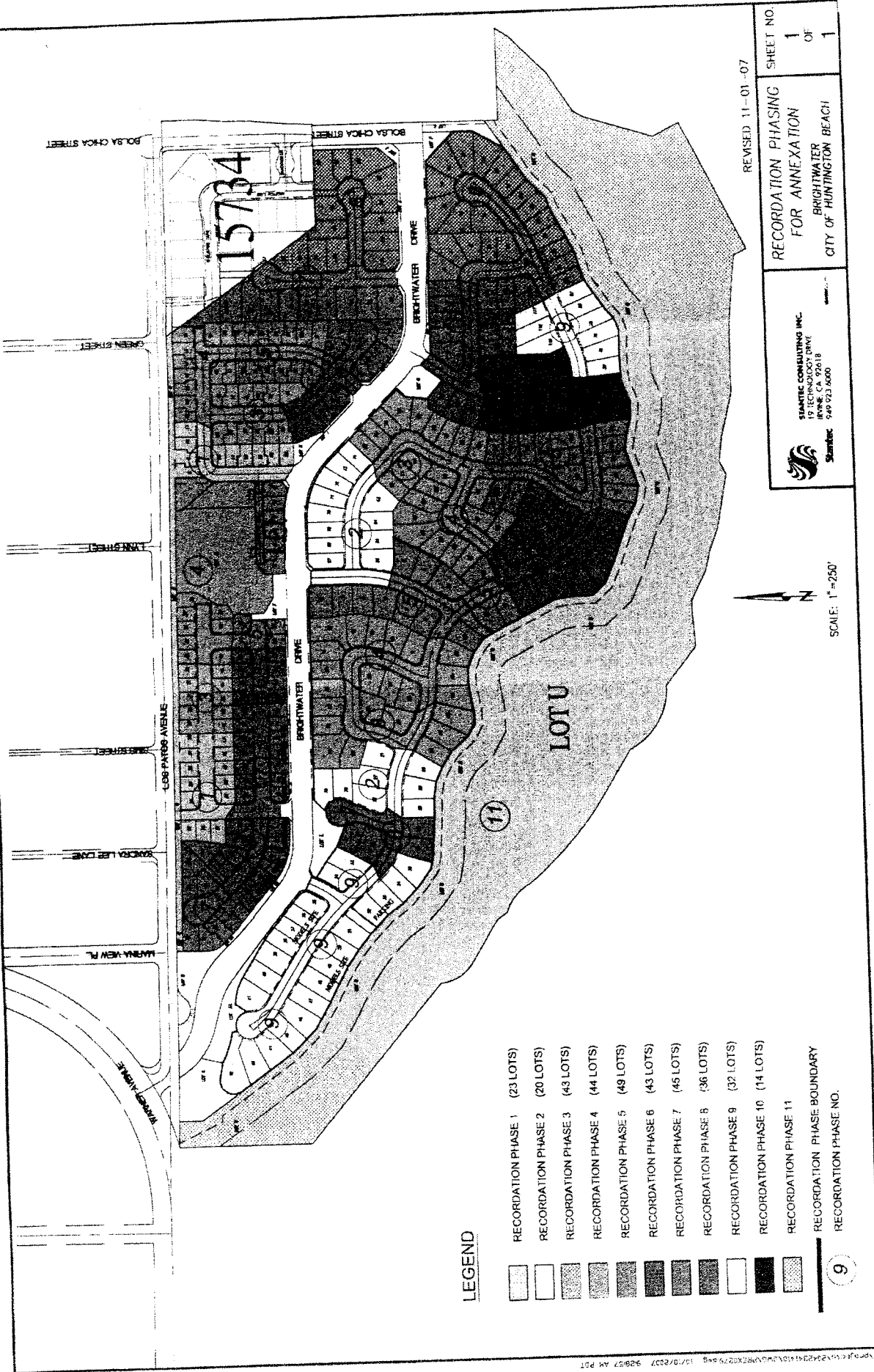
- ① NE 1/4 COR., LOT 2A, TR. NO. 17032
- ② SE 1/4 COR., LOT 2B, TR. NO. 17032
- ③ NE 1/4 COR., LOT 47, TR. NO. 17032
- ④ SE 1/4 COR., LOT 47, TR. NO. 17032
- ⑤ SW 1/4 COR., LOT 51, TR. NO. 17032

HUNTINGTON HARBOUR CORPORATION ANNEXATION PARCEL 3-A

BOLSA CHICA NO. 5 ANNEXATION



NO.	BEARING	DISTANCE
L1	N07°05'39"E	20.00'
L2	N00°14'02"E	48.28'
L3	N07°30'30"E	98.29'
L4	N81°45'38"W	84.97'
L5	N52°30'40"W	97.74'
L6	S00°14'02"W	67.96'
L7	S00°25'17"W	46.00'
L8	S00°38'26"W	63.87'



LEGEND

- RECORDATION PHASE 1 (23 LOTS)
- RECORDATION PHASE 2 (20 LOTS)
- RECORDATION PHASE 3 (43 LOTS)
- RECORDATION PHASE 4 (44 LOTS)
- RECORDATION PHASE 5 (49 LOTS)
- RECORDATION PHASE 6 (43 LOTS)
- RECORDATION PHASE 7 (45 LOTS)
- RECORDATION PHASE 8 (36 LOTS)
- RECORDATION PHASE 9 (32 LOTS)
- RECORDATION PHASE 10 (14 LOTS)
- RECORDATION PHASE 11
- RECORDATION PHASE BOUNDARY
- RECORDATION PHASE NO.

9

REVISED 11-01-07

RECORDATION PHASING
 FOR ANNEXATION
 BRIGHTWATER
 CITY OF HUNTINGTON BEACH

STATTEC CONSULTING INC.
 17111 E. 17TH AVE., SUITE 100
 DENVER, CO 80231
 303.751.6000

SHEET NO. 1
 OF 1

SCALE: 1" = 250'