

# Orange County Boundary and Annexation Report 2013-2014 (January 1)



- 1. Emerson Annexation to Newport Beach (IA 12-07)
- 2. Northeast Annexation to the City of Mission Viejo (CA 12-13)

	January 1, 2014 Jurisdictions
	January 1, 2013 Jurisdictions

Source: OC Geomatics, 2013 & 2014  
 Note: Coastal boundary represents mean high tide circa 2015. Coastal boundary approximated by CDR GIS staff.

**Orange County Boundary and Annexation Report 2013-2014**

Jurisdiction	Total Area (Square Miles)*		Area Change 2013-2014**	Annexation Reference #
	January 1, 2013	January 1, 2014		
Aliso Viejo	6.921	6.921	0	
Anaheim	50.872	50.872	0	
Brea	12.221	12.221	0	
Buena Park	10.550	10.550	0	
Costa Mesa	15.827	15.827	0	
Cypress	6.622	6.622	0	
Dana Point	6.602	6.602	0	
Fountain Valley	9.065	9.065	0	
Fullerton	22.447	22.447	0	
Garden Grove	17.923	17.923	0	
Huntington Beach	27.612	27.612	0	
Irvine	65.969	65.969	0	
Laguna Beach	8.932	8.932	0	
Laguna Hills	6.647	6.647	0	
Laguna Niguel	14.787	14.787	0	
Laguna Woods	3.306	3.306	0	
La Habra	7.369	7.369	0	
Lake Forest	16.785	16.785	0	
La Palma	1.804	1.804	0	
Los Alamitos	4.091	4.091	0	
Mission Viejo	17.933	18.003	0.070	2
Newport Beach	25.984	25.987	0.003	1
Orange	25.783	25.783	0	
Placentia	6.621	6.621	0	
Rancho Santa Margarita	12.937	12.937	0	
San Clemente	18.357	18.357	0	
San Juan Capistrano	14.407	14.407	0	
Santa Ana	27.352	27.352	0	
Seal Beach	11.880	11.880	0	
Stanton	3.105	3.105	0	
Tustin	11.137	11.137	0	
Villa Park	2.078	2.078	0	
Westminster	10.070	10.070	0	
Yorba Linda	19.867	19.867	0	
Unincorporated	275.947	275.874	-0.073	1, 2
<b>Orange County</b>	<b>799.811</b>	<b>799.811</b>	<b>0.000</b>	

Source: O.C. Geomatics, 2013 & 2014

\*Area calculated in ArcGIS by CDR.

\*\*Annual area change totals may not match detailed annexation information due to rounding.

**Detailed Annexation List:**

- 1) Emerson Annexation to Newport Beach (IA 12-07)  
 Effective: 3/19/2013  
 From Unincorporated Orange County to Newport Beach  
 Inhabited: MFD & SFD  
 1.88 acres (0.00294 sq. miles)
  
- 2) Northeast Annexation to City of Mission Viejo (CA 12-13)  
 Effective: 8/9/2013  
 From Unincorporated Orange County to Mission Viejo  
 Uninhabited  
 44.614 acres (0.06971 sq. miles)

**Notes:**

Benchmark 2015.

Some jurisdictions' legal boundary extends three miles off the coast.

A fixed boundary line at the coast was created in November 2014 based on high-resolution county-wide aerial imagery that was captured on June 19, 2013, to approximate the ocean waterline and to eliminate artificial land area changes to jurisdictions adjacent to the Orange County coast. This coast line does not define any vertical datum such as mean high tide, mean sea level, or mean lower low tide.

This reference line was developed through a collaboration of OC Public Works, OC LAFCO, and CDR; it has no legal value; and its purpose is for CDR's use in reporting population density and jurisdictional annexations.

For official legal boundaries, contact the County of Orange Surveyor's office

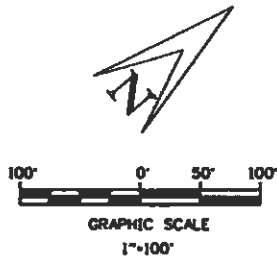
<http://ocpublicworks.com/survey/>

Exhibit A



# EXHIBIT "B"

## EMERSON - CHURCHILL ANNEXATION No. CA 02-12 TO THE CITY OF NEWPORT BEACH



CITY OF COSTA MESA

RANCHO SANTIAGO de SANTA ANA

GPS NO. 6228  
 N 2182036.092  
 E 6058216.492  
 PER TR 15468  
 MM 757/9-11

SANTA ANA AVENUE

21st STREET

### SURVEYOR'S STATEMENT

THIS PROPOSAL WAS PREPARED BY ME OR UNDER MY DIRECTION.

*Wanda Bale*  
 WANDA BALE, L.S. 7695  
 MY LICENSE EXPIRES 12/31/2006



### COUNTY SURVEYOR'S STATEMENT

THIS PROPOSAL DOES MEET THE APPROVAL OF THE ORANGE COUNTY SURVEYORS OFFICE  
 DATED THIS 5th DAY OF May 2006.

*Raymond L. Mathe*  
 RAYMOND L. MATHE, COUNTY SURVEYOR, L.S. 6185  
 MY LICENSE EXPIRES 3/31/2008



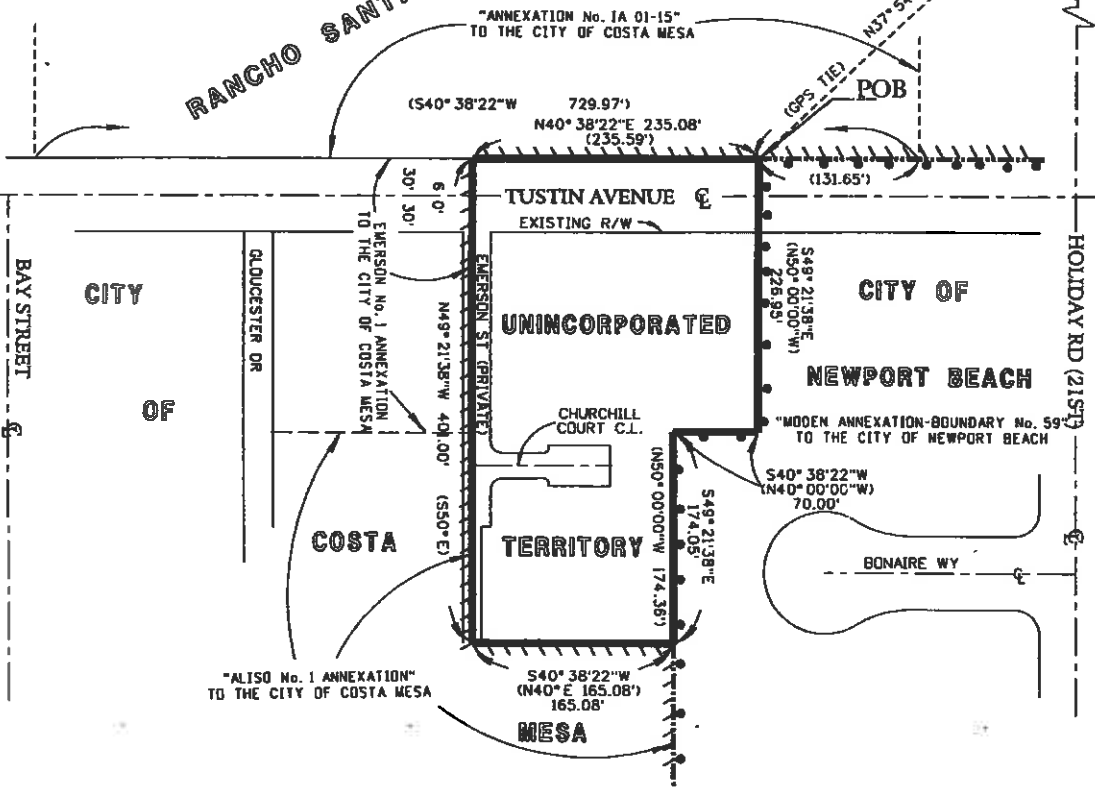
THIS PROPOSAL CONTAINS 1.88 ACRES, MORE OR LESS

APN: SEE SHEET 2

### LEGEND

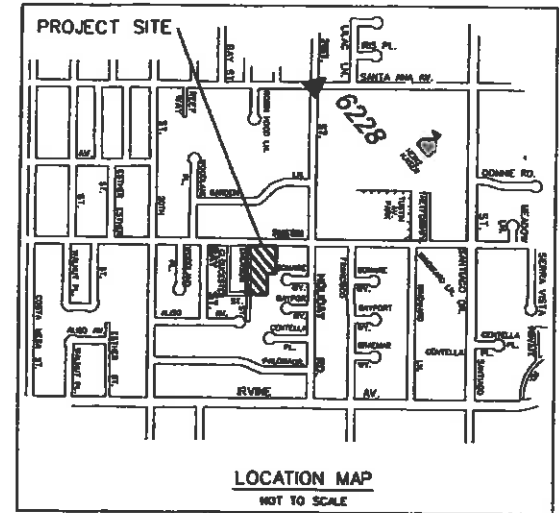
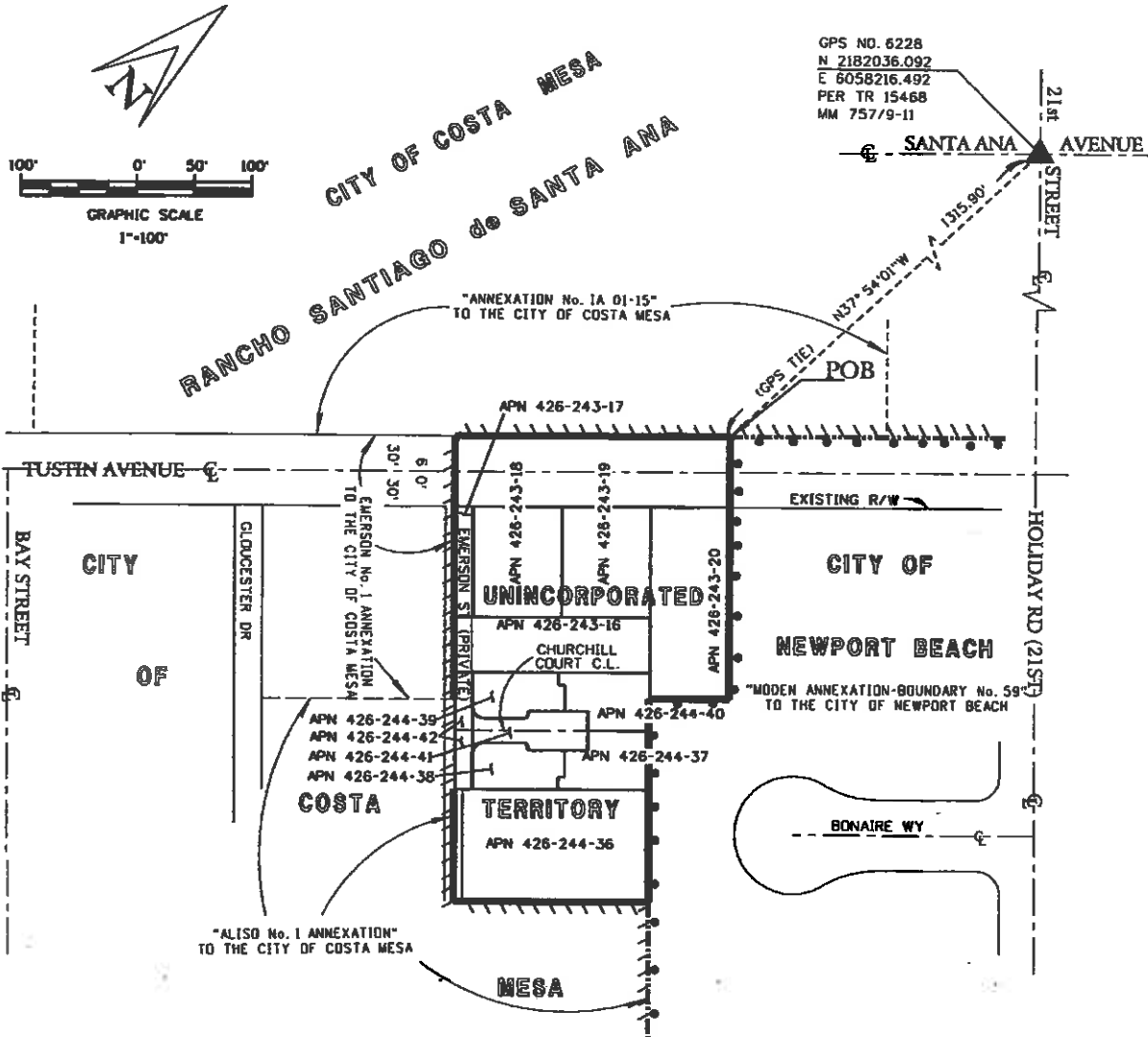
- ( ) INDICATES RECORD DATA PER ADJOINING ANNEXATION.
- ANNEXATION BOUNDARY
- EXISTING CITY OF NEWPORT BEACH BOUNDARY.
- EXISTING CITY OF COSTA MESA BOUNDARY.
- EXISTING COMMON BOUNDARIES BETWEEN THE CITIES OF COSTA MESA AND NEWPORT BEACH.

UNLESS OTHERWISE NOTED, ALL DISTANCES ON THIS MAP ARE GROUND AND ARE BASED UPON THE CALIFORNIA COORDINATE SYSTEM (CCS83), ZONE VI, 1983 NAD- (1991.35 EPOCH OCS GPS ADJUSTMENT). TO OBTAIN GRID DISTANCE, MULTIPLY GROUND DISTANCE BY 0.99996972



# EXHIBIT "B"

## EMERSON - CHURCHILL ANNEXATION No. CA 02-12 TO THE CITY OF NEWPORT BEACH

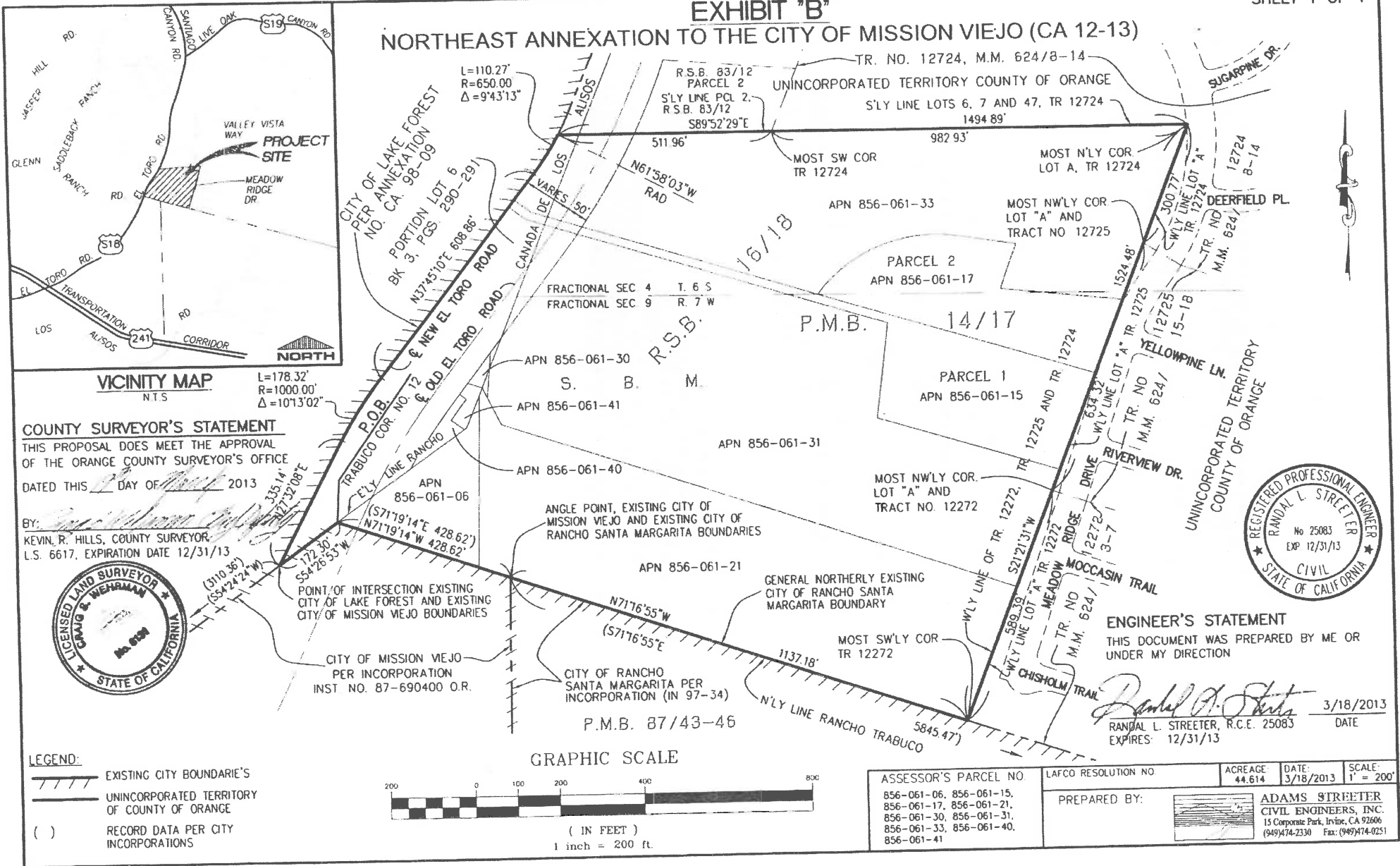


### LEGEND

- APN ASSESSORS PARCEL MAP NUMBER
- ( ) INDICATES RECORD DATA PER ADJOINING ANNEXATION.
- ANNEXATION BOUNDARY
- EXISTING CITY OF NEWPORT BEACH BOUNDARY.
- EXISTING CITY OF COSTA MESA BOUNDARY.
- EXISTING COMMON BOUNDARIES BETWEEN THE CITIES OF COSTA MESA AND NEWPORT BEACH.

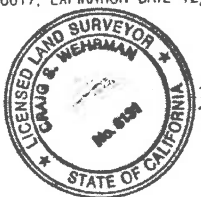
UNLESS OTHERWISE NOTED, ALL DISTANCES ON THIS MAP ARE GROUND AND ARE BASED UPON THE CALIFORNIA COORDINATE SYSTEM (CCS83), ZONE VI, 1983 NAD (1991.35 EPOCH OCS ADJUSTMENT). TO OBTAIN GRID DISTANCE, MULTIPLY GROUND DISTANCE BY 0.99996972

**EXHIBIT "B"**  
**NORTHEAST ANNEXATION TO THE CITY OF MISSION VIEJO (CA 12-13)**



**COUNTY SURVEYOR'S STATEMENT**

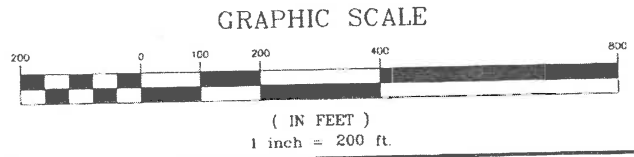
THIS PROPOSAL DOES MEET THE APPROVAL OF THE ORANGE COUNTY SURVEYOR'S OFFICE DATED THIS 18 DAY OF APRIL 2013  
 BY: KEVIN R. HILLS, COUNTY SURVEYOR  
 L.S. 6617, EXPIRATION DATE 12/31/13



**ENGINEER'S STATEMENT**  
 THIS DOCUMENT WAS PREPARED BY ME OR UNDER MY DIRECTION  
*Randal L. Streeter*  
 RANDAL L. STREETER, R.C.E. 25083  
 EXPIRES: 12/31/13

3/18/2013  
 DATE

- LEGEND:**
- EXISTING CITY BOUNDARIES
  - UNINCORPORATED TERRITORY OF COUNTY OF ORANGE
  - RECORD DATA PER CITY INCORPORATIONS








ASSESSOR'S PARCEL NO. 856-061-06, 856-061-15, 856-061-17, 856-061-21, 856-061-30, 856-061-31, 856-061-33, 856-061-40, 856-061-41	LAFCO RESOLUTION NO. PREPARED BY: 	ACREAGE 44.614	DATE 3/18/2013	SCALE 1" = 200'
---	--	-------------------	-------------------	--------------------

EXHIBIT D



### Northeast Annexation to the City of Mission Viejo (CA 12-13)



-  City of Mission Viejo
-  Proposed Mission Viejo SOI Boundary
-  City of Lake Forest
-  Proposed Lake Forest SOI Boundary
-  Proposed Annexation (CA 12-13)