

Orange County Boundary and Annexation Report 2010-2011 (January 1)



- 1. Southern Island Annexation to Fountain Valley (IA 09-16)
- 2. Ortega/La Pata Annexation to San Juan Capistrano (CA 09-19)

	January 1, 2011 Jurisdictions
	January 1, 2010 Jurisdictions

Source: OC Geomatics, 2010 & 2011
Some jurisdictions' legal boundary extends three miles off the coast.

Orange County Boundary and Annexation Report 2010-2011

Jurisdiction	Total Area (Square Miles)*		Area Change 2010-2011**	Annexation Reference #
	January 1, 2010	January 1, 2011		
Aliso Viejo	6.921	6.921	0	
Anaheim	50.872	50.872	0	
Brea	12.221	12.221	0	
Buena Park	10.550	10.550	0	
Costa Mesa	15.827	15.827	0	
Cypress	6.622	6.622	0	
Dana Point	6.602	6.602	0	
Fountain Valley	9.048	9.065	0.016	1
Fullerton	22.447	22.447	0	
Garden Grove	17.923	17.923	0	
Huntington Beach	27.402	27.402	0	
Irvine	65.969	65.969	0	
Laguna Beach	8.932	8.932	0	
Laguna Hills	6.647	6.647	0	
Laguna Niguel	14.787	14.787	0	
Laguna Woods	3.306	3.306	0	
La Habra	7.360	7.360	0	
Lake Forest	16.785	16.785	0	
La Palma	1.804	1.804	0	
Los Alamitos	4.089	4.089	0	
Mission Viejo	17.933	17.933	0	
Newport Beach	25.984	25.984	0	
Orange	25.783	25.783	0	
Placentia	6.621	6.621	0	
Rancho Santa Margarita	12.937	12.937	0	
San Clemente	18.357	18.357	0	
San Juan Capistrano	14.201	14.407	0.206	2
Santa Ana	27.352	27.352	0	
Seal Beach	11.991	11.991	0	
Stanton	3.087	3.087	0	
Tustin	11.137	11.137	0	
Villa Park	2.078	2.078	0	
Westminster	10.070	10.070	0	
Yorba Linda	19.867	19.867	0	
Unincorporated	276.404	276.183	-0.222	1,2
Orange County	799.920	799.920	0	

Source: O.C. Geomatics, 2010 & 2011

*Area calculated in ArcGIS by CDR.

**Annual area change totals may not match detailed annexation information due to rounding.

Detailed Annexation List:

- 1) Southern Island Annexation to the City of Fountain Valley (IA 09-16)
Effective: 1/14/2010
From Unincorporated Orange County to Fountain Valley
Uninhabited
10.45 acres (0.01633 sq. miles)

- 2) Ortega/La Pata Annexation to the City of San Juan Capistrano (CA 09-19)
Effective: 1/20/2010
From Unincorporated Orange County to San Juan Capistrano
Uninhabited (neighborhood park)
131.534 acres (0.20552 sq. miles)

Notes:

Benchmark 2015.

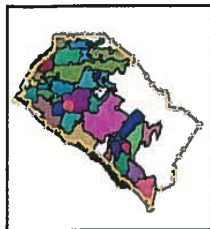
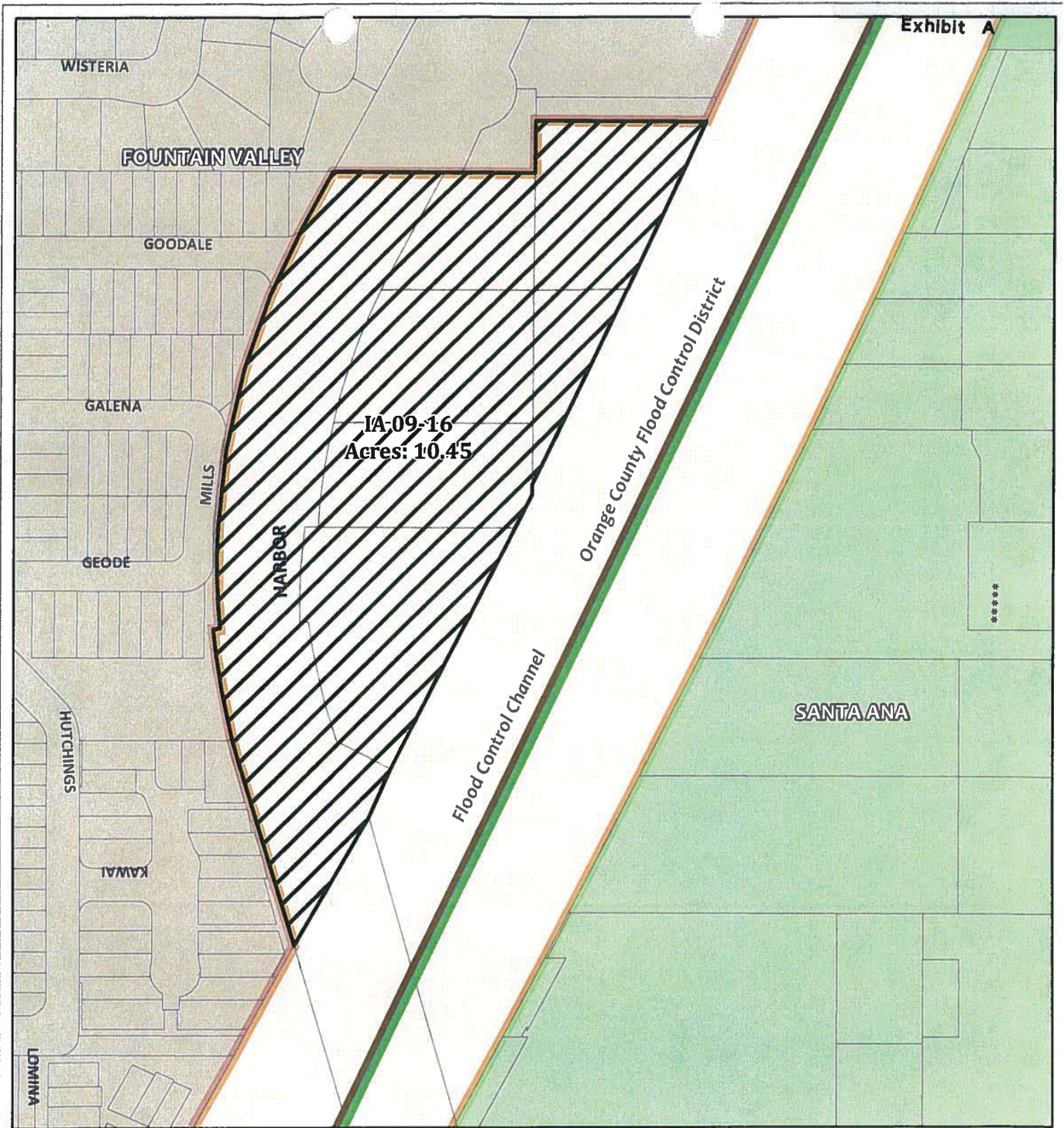
Some jurisdictions' legal boundary extends three miles off the coast.

A fixed boundary line at the coast was created in November 2014 based on high-resolution county-wide aerial imagery that was captured on June 19, 2013, to approximate the ocean waterline and to eliminate artificial land area changes to jurisdictions adjacent to the Orange County coast. This coast line does not define any vertical datum such as mean high tide, mean sea level, or mean lower low tide.

This reference line was developed through a collaboration of OC Public Works, OC LAFCO, and CDR; it has no legal value; and its purpose is for CDR's use in reporting population density and jurisdictional annexations.

For official legal boundaries, contact the County of Orange Surveyor's office

<http://ocpublicworks.com/survey/>



F:\gis\projects\IA09-16\A0916_VicinityMap.pdf

Vicinity Map
Southern Island Annexation to the City of Fountain Valley
IA 09-16



0 450 Feet

- Spheres of Influence**
-  IA 09-16
 -  Fountain Valley
 -  Santa Ana

- City Boundaries**
-  Fountain Valley
 -  Santa Ana
 -  Unincorporated OC

9/25/2009

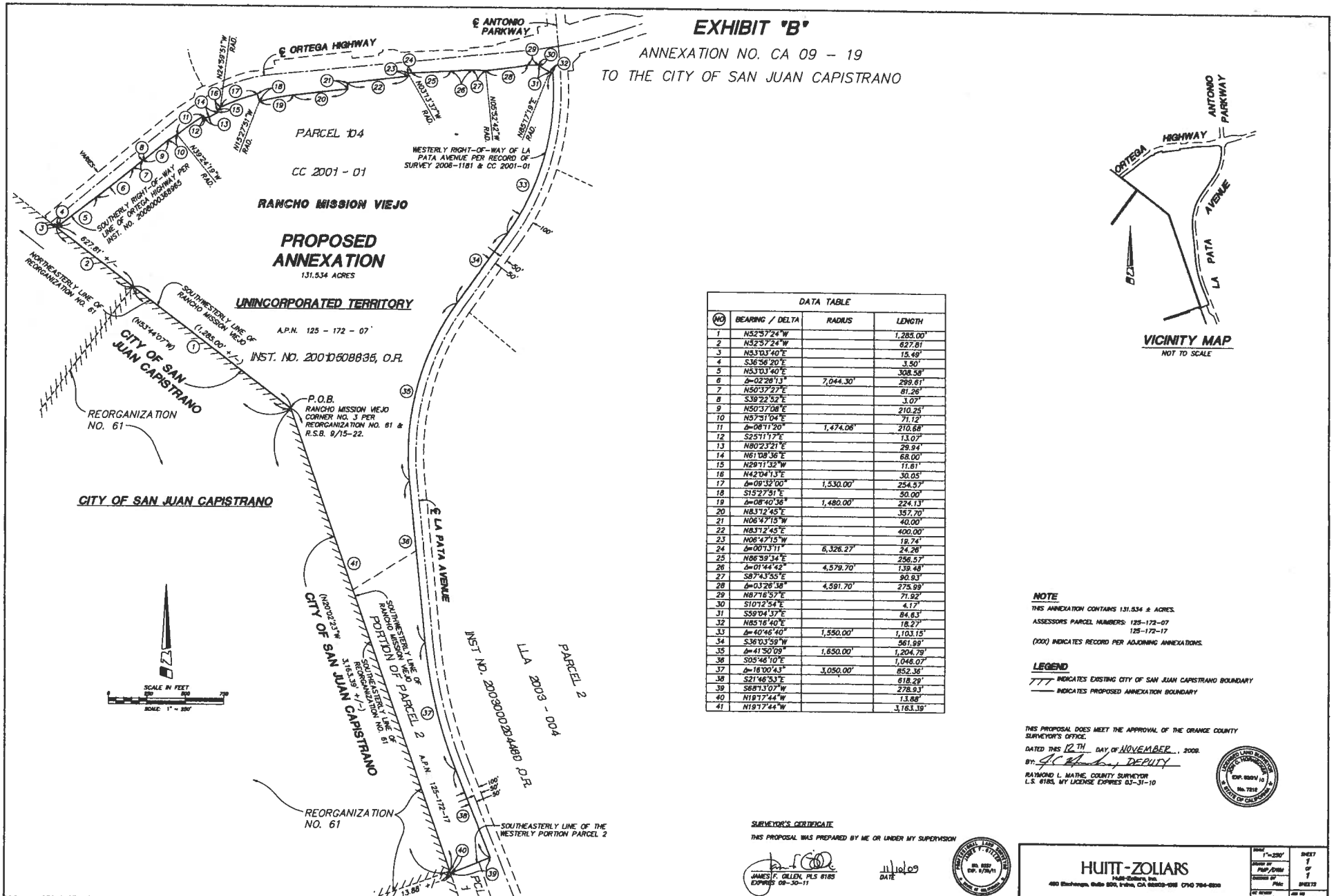


EXHIBIT 'B'
 ANNEXATION NO. CA 09 - 19
 TO THE CITY OF SAN JUAN CAPISTRANO

NO	BEARING / DELTA	RADIUS	LENGTH
1	N52°57'24" W		1,285.00'
2	N52°57'24" W		627.81'
3	N53°03'40" E		15.49'
4	S36°56'20" E		3.50'
5	N53°03'40" E		308.58'
6	Δ=02°28'13"	7,044.30'	299.81'
7	N50°37'27" E		81.26'
8	S39°22'52" E		3.07'
9	N50°37'08" E		210.25'
10	N57°51'04" E		71.12'
11	Δ=08°11'30"	1,474.06'	210.88'
12	S25°11'17" E		13.02'
13	N80°23'21" E		29.94'
14	N61°08'36" E		68.00'
15	N28°11'32" W		11.61'
16	N42°04'13" E		30.05'
17	Δ=09°32'00"	1,530.00'	254.57'
18	S15°27'51" E		50.00'
19	Δ=08°40'36"	1,480.00'	224.13'
20	N83°12'45" E		357.70'
21	N06°47'15" W		40.00'
22	N83°12'45" E		400.00'
23	N06°47'15" W		18.74'
24	Δ=00°13'11"	6,326.27'	24.28'
25	N86°39'34" E		256.57'
26	Δ=01°44'42"	4,578.70'	139.48'
27	S87°43'55" E		90.83'
28	Δ=03°26'38"	4,591.70'	278.99'
29	N87°18'57" E		71.92'
30	S10°12'54" E		4.17'
31	S59°04'37" E		84.63'
32	N85°16'40" E		18.27'
33	Δ=40°46'40"	1,530.00'	1,103.15'
34	S36°03'59" W		561.99'
35	Δ=41°50'09"	1,850.00'	1,204.79'
36	S05°46'10" E		1,048.07'
37	Δ=18°00'43"	3,050.00'	852.36'
38	S21°46'53" E		618.29'
39	S68°13'07" W		278.93'
40	N18°17'44" W		13.66'
41	N18°17'44" W		3,163.39'

NOTE
 THIS ANNEXATION CONTAINS 131.534 ACRES.
 ASSESSOR'S PARCEL NUMBERS: 125-172-07
 125-172-17
 (000) INDICATES RECORD PER ADJOINING ANNEXATIONS.

LEGEND
 --- INDICATES EXISTING CITY OF SAN JUAN CAPISTRANO BOUNDARY
 --- INDICATES PROPOSED ANNEXATION BOUNDARY

THIS PROPOSAL DOES MEET THE APPROVAL OF THE ORANGE COUNTY SURVEYOR'S OFFICE.
 DATED THIS 12TH DAY OF NOVEMBER, 2008.
 BY: *[Signature]* DEPUTY
 RAYMOND L. MATHE, COUNTY SURVEYOR
 L.S. 0183, MY LICENSE EXPIRES 03-31-10



SURVEYOR'S CERTIFICATE
 THIS PROPOSAL WAS PREPARED BY ME OR UNDER MY SUPERVISION
[Signature]
 JAMES F. GILLEN, PLS 0183
 EXPIRES 08-31-11



HUITT-ZOLIARS
 480 El Estero, Suite 200, Irvine, CA 92614-0208 (714) 784-8200

SCALE: 1" = 250'	SHEET 7 OF 7
DATE: 11/10/2008	DRAWN BY: JMG
	CHECKED BY: JMG
	DATE: 11/10/2008